

# Tumbleweeds

THE QUARTERLY NEWSPAPER FOR SANTA FE FAMILIES

SPRING 2015 MARCH, APRIL, MAY

# Bloom

Earth Day • Mandela Magnet School  
Math in the Cloud • Family Events Calendar  
Spring Break & Summer Camp Directory



# GLORIETA CAMPS

- *summer* -

## Service Team

This is an incredible community service/volunteer opportunity for all 16-18 year olds. Spend two weeks serving at Glorieta Camps, growing in your walk with Christ and creating unforgettable memories. For each week completed, you will receive \$100 towards a Wilderness Program, including Trail Crew, Discipleship, Walkabout, or Semester Course.

**2 week sessions | Free | 16-18 year olds | [emily@glorieta.org](mailto:emily@glorieta.org)**

## Family Camp

Family camp is a 7-day experience that encourages families to grow together spiritually while engaging in unique outdoor adventure activities by day and relaxing among the pines of the Southern Rockies by night. Families stay in beautiful hotel rooms and eat amazing food in a variety of settings. This is an all inclusive family vacation that will have something for everyone in the family!

**7 day sessions | All-Inclusive | All Ages | [josh@glorieta.org](mailto:josh@glorieta.org)**

## Trail Crew

Our Trail Crew program is for high school students who want to be a part of camp, make close friends, and fulfill community service in the outdoors. Learn skills in trail building and maintenance, be a part of a team, and grow as a leader all the while experiencing the most fun aspects of Glorieta's activities!

**1 - 3 week sessions | \$100/week | High School | [scott@glorieta.org](mailto:scott@glorieta.org)**

## Wilderness

The Glorieta Wilderness program offers a wide variety of courses; everything from simple backpacking, to larger expeditions, to wilderness photography. We call our programs "courses" because they're driven by education and aim to develop individuals, rather than simply being a one-time experience. See website for full listing of courses.

**1 - 15 week sessions | \$100-\$7,000/camper | All Ages | [scott@glorieta.org](mailto:scott@glorieta.org)**

## Day Camp

At Day Camp, your child will create lifelong memories as they encounter God's creation, God's word, and enjoy activities alongside new friends. From 8:00 am to 4:30 pm every weekday, give your child the opportunity to spend their summer days in a way that is unforgettable.

**5 day sessions | \$85/camper | 1st - 6th grade | [don@glorieta.org](mailto:don@glorieta.org)**



Change**FOREVER**. Now.

[www.glorieta.org](http://www.glorieta.org)



**YOUTH MUSIC PROGRAMS**

Join one of our many music programs for youth!

Offering Mariachi, Elementary Strings, Jazz and Orchestras

Call 505-672-5565 or visit [www.sfysa.org](http://www.sfysa.org)



**SANTA FE YOUTH SYMPHONY ASSOCIATION**

Serving Santa Fe for over 20 years!



**RIO GRANDE SCHOOL**

**PRE-K & KINDERGARTEN**

PROGRAMS DESIGNED TO EDUCATE THE HEART AND THE MIND  
Studies show that integrating social-emotional learning (SEL) in the classroom yields a deeper sense of self and improved academic performance

GIVE YOUR CHILD A CRITICAL FOUNDATION FOR SUCCESS



ASK US ABOUT TUITION ASSISTANCE!

**RIO GRANDE SCHOOL OFFERS A RESEARCH-BASED BALANCE OF SOCIAL-EMOTIONAL AND ACADEMIC LEARNING THROUGH STRONG RELATIONSHIPS**

INQUIRE NOW  
**983.1621**  
[admission@riograndeschool.org](mailto:admission@riograndeschool.org)

Let Rio Grande School's degreed early childhood educators help you nurture a resilient, curious child in our intimate, productive classes.



CHALLENGING, INSPIRING, AND NURTURING CHILDREN SINCE 1978

[RIOGRANDESCHOOL.ORG](http://RIOGRANDESCHOOL.ORG)

AGE 3 - GRADE 6

Rio Grande School does not discriminate on the basis of race, color, gender, sexual orientation, gender identity, or national or ethnic origin.

**One World**

How water connects us



**How Water Connects Us**

Water connects us – with our neighbors, with our communities, with nature, and with the world around us. It's true saving water saves you money on your water bill. But isn't it nice that you can help save the planet at the same time?

This artwork is by Meghan Kaschner, a sixth grader from EJ Martinez Elementary and the grand prize winner of the Santa Fe Water Conservation Program annual poster contest.

For more about the poster contest and how you can save water, visit [savewatersantafe.com](http://savewatersantafe.com).



**Saving Water Is Always in Season**

City of Santa Fe Water Conservation Office 505.955.4225  
[savewatersantafe.com](http://savewatersantafe.com)

## false spring, REAL LEARNING

### As we wrap up this issue

of Tumbleweeds, Santa Fe is experiencing the first of this year's "faux springs." The last patches of snow are melting in our yard from a storm that closed schools barely a week ago. The morning birdsong gets more raucous every day. The neighborhood cats, lured into ceasefire when winter set in, have called off their truce.

It's hard not to delight in sunny, 60-degree days, but when they come to Santa Fe in February we know we're being teased. All species seem to succumb to spring's charms. Soon the bulbs will be popping up, fruit trees will start budding, and pets will shed their winter layer of fur, despite the freezes and frosts that are sure to follow.

Spring can be a tricky season for kids, whose little engines rev up as the weather warms and summer vacation comes into their sights. Teachers

describe the challenge of cramming a little more learning into their charges before the end-of-year field days and talent shows.

Perhaps it's ironic that standardized testing falls at this time of year. Testing children three-quarters of the way through the school year may make academic sense, but it runs counter to natural rhythms. Warmer days and stronger sunrays entice children to get outside and move, while we are telling them to sharpen their pencils, sit at their desks and fill in the answer bubbles on test forms.

Not that timing in the school year is the main reason behind the national groundswell against standardized testing. Parents, teachers and some entire school districts are protesting what they consider an obsession with testing. Whatever useful information these tests offer, their opponents ar-

gue, is undermined by the sheer numbers of hours devoted to these tests and the consequence of low scores to individual students, teachers and schools as a whole.

The New Mexico Public Education Department requires students in grades three to 11 to take between 6.5 and 10.5 hours of state-mandated standardized tests every year, though many local districts and schools require additional exams. This may not seem like much — and indeed is less than the national average of 15 to 20 hours — but this is a case where numbers don't tell the whole story.

The bigger picture encompasses the time and energy teachers devote to tailoring lessons to skills and material that will be covered on these tests. It includes the disruption to the momentum of learning, not just during

*Continued on page 6*



"Sewing Peace Back," by Lasya Fiuty, age 13. Fiuty is the 2015 state winner of the Lions Club International Peace Poster Contest and will be the only New Mexico representative at the international competition in Chicago.

## Tumbleweeds

Volume 20  
Number 4

Editor/Publisher:  
Claudette E. Sutton

Assistant Editors:  
Steve Harrington and  
Shirl Harrington

Staff Writer/Editor:  
Nina Bunker Ruiz

Calendar and Directory Editor:  
Adrian Angulo

Contributors:  
Shabd Simran Adeniji, Sheri Bishop, Perli Cunanan, Myra Krien, Patricia Lord, Rebecca Morgan, Judith Nasse, Nina Bunker Ruiz, Claudette E. Sutton, Molly Brooks Sylla, Gloria Fournier Valdez

Spanish Editor:  
Flor de María Oliva

Kids' Page:  
Jone Hallmark

Graphic Designer:  
Ann Hackett

Cover Photographer:  
Ana June

Web Designer:  
Artotems Co.

Tumbleweeds is a quarterly newspaper for all Santa Fe families and people who work professionally with children.

We welcome letters, artwork and articles from our readers on personal and professional experiences with children.

Please send to:  
Tumbleweeds  
369 Montezuma #191  
Santa Fe, NM 87501  
Phone: (505) 984-3171

Website:  
[www.sftumbleweeds.com](http://www.sftumbleweeds.com)

Email:  
[info@sftumbleweeds.com](mailto:info@sftumbleweeds.com)

Tumbleweeds is published quarterly, in the Spring, Summer, Fall, and Winter, and is distributed free throughout Santa Fe, Española and Los Alamos. Paid subscriptions are available for \$15 a year. © 2015 Tumbleweeds. All rights reserved. Please write the publisher for permission to reproduce any article in whole or in part. Paid advertisements do not represent an endorsement by Tumbleweeds. Articles express the opinion of the author and not necessarily that of the publisher.

# Contents

Where is our child care? ¿Dónde están nuestras guarderías?

page 8 & 26



Waldorf movement technique lays cornerstones for learning. page 12

Encouraging self-esteem begets compassion, not overconfidence.

page 20



Stitch up your plans for spring break and summer. page 28



<b>Notes from Claudette:</b> False Spring, Real Learning.....	4
<b>Dear Tumbleweeds</b> .....	7
<b>Infants &amp; Toddlers:</b> Where is Our Child Care Now?.....	8
<b>Preschool:</b> Earth Day, Art Day, Every Day.....	10
<b>Education:</b> Use it or Lose it!.....	12
<b>Teaching for Peace:</b> Teaching for Peace.....	14
<b>Math:</b> School in the Cloud.....	16
<b>Briefs</b> .....	18
<b>Kids' Page:</b> Smooth Sailing.....	19
<b>Parenting:</b> Building Self-Esteem from the Ground Up.....	20
<b>Day Trip:</b> Albuquerque Avian Adventure.....	22
<b>Spring Activities:</b> Be a Tree.....	24
Act Out.....	24
Picture Frame Game.....	24
Decorated Alphabet.....	25
<b>Voces de la Familia:</b> ¿Dónde están nuestras guarderías?.....	26
<b>Spring Break &amp; Summer Camp Directory</b> .....	28
<b>Spring 2015 Calendar</b> .....	32

**ON THE COVER:** Tatiyana Tashaun Taylor, age 9, and Taio Leanne Taylor, 6, of Albuquerque enjoyed playing in spring-like weather outside the Santa Fe Art Institute in February. © Ana June.

**ARTWORK IN THIS ISSUE** is by students at Mandela International Magnet School. Find more works by MIMS students on our website, [www.sftumbleweeds.com](http://www.sftumbleweeds.com).

## Be a part of Tumbleweeds!

### Summer 2015 Deadlines

- Article Submissions: April 15
- Summer Camp & Program Directory and Summer Calendar Listings: May 1
- Ad Reservations: May 1
- Ad Copy: May 8
- Publication Date: May 20



### Get on our list—Subscribe!

- Please enter my subscription at \$15/year.  
 I want to make a contribution of:  
 \$15    \$25    \$50    \$100    \_\_\_\_\_  
 Support this vital community resource.

Name \_\_\_\_\_  
 Address \_\_\_\_\_  
 City \_\_\_\_\_ State \_\_\_\_\_ Zip \_\_\_\_\_

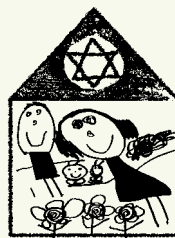
This is a gift subscription. Please send a card from \_\_\_\_\_

Mail your check or money order to:

**Tumbleweeds**

369 Montezuma, #191, Santa Fe, NM 87501  
 Phone (505) 984-3171 • Fax (505) 988-7558  
[info@sftumbleweeds.com](mailto:info@sftumbleweeds.com)

We accept Visa, MasterCard, and Discover



## TEMPLE BETH SHALOM PRESCHOOL

Inspiring Lifelong Learning and Caring



BECOME PART OF THE TBS FAMILY TODAY!

[PRESCHOOL@SFTBS.ORG](mailto:PRESCHOOL@SFTBS.ORG)  
 505.982.6888

ENROLLING 2015-2016 CAMP SHALOM (SUMMER) AND PRESCHOOL FOR 2-5 YEAR OLDS



NAEYC 5 STAR ACCREDITED

FOLLOW US ON FACEBOOK!  
[facebook.com/ibssantafe](https://www.facebook.com/ibssantafe)



testing weeks but subsequent weeks when children are pulled out of class to make up tests administered when they were absent. And it must take into account the emotional cost of test anxiety in children at ever younger and more vulnerable ages, and the loss of classroom opportunities for creativity, self-expression and self-motivation.

Over my years as a student, parent and observer, I've seen the pendulum swing between educational philosophies that measure classroom success in qualitative terms — by children's love of learning, curiosity and other "know it when you feel it" criteria — and those that rely on quantitative benchmarks. Both have value, ideally in combination. Since the implementation of "No Child Left Behind," the pendulum has swung to the quantitative and parked there.

New Mexico Opt Out is one of a growing number of national organizations for families choosing to boycott standardized tests. Their website, [www.nmoptout.org](http://www.nmoptout.org), contains a test-refusal form, tips for talking with your child's teacher and principal, links, and strategies for resisting "pushback." Tumbleweeds is not necessarily advocating for opting out of these tests, which are still required by state law. We believe a better strategy for most families would be to give children strategies for managing tests with a healthy perspective. This approach doesn't work for all families, however, and it won't change public policy by itself. Civil disobedience, along with calls and emails to elected officials, may be essential tools for rolling back the excesses of testing and prioritizing other ways of learning.

By a combination of planning and serendipity, the theme of alternative ways of learning runs all through articles in this issue of Tumbleweeds. Here's some of what you'll find.

Preschool teacher Judith Nasse notes that artistic expression evolved long before written language and actually serves as a foundation for literacy. She provides activities based around Earth Day that will encourage children's creative expression and powers of observation.

If you're not familiar with the Waldorf philosophy, you may never have heard of "eurythmy," an expressive movement technique that integrates both sides of the brain and develops body awareness to support learning. Patricia Lord, of the Santa Fe Waldorf School, describes this technique and its value to children particularly in these times when they are bombarded by technological stimulation.

Santa Fe has a new public secondary school, the Mandela International Magnet School, devoted to teaching peace through intercultural understanding and measuring students' progress with a nuanced, individualized system, in contrast to the one-size-fits-all mode of standardized testing.

Some inspired and inspiring after-school teachers offer spring activities to get kids thinking outside the Scantron circle.

Myra Krien, director of Pomegranate Studios Dance School, presents a beautifully simple activity that children can do in the classroom — and you and I can do by our desks — to feel more grounded and engaged in our bodies and senses.

Rebecca Morgan, director of Teatro Paraguas Children's Theatre, offers games and skits, which require just a little more time and space, that develop children's imagination and confidence before an audience.

Sherry Bishop explains why we should leave our keyboards, pick up a pen and develop a more intimate relationship to words and letters.

Gloria Fournier Valdez lures us to explore the natural world close to home, with a day trip to the Rio Grande Nature Center and Tingley Beach — and an all-important pizza stop.

And Jone Hallmark, our Kids' Page editor since Tumbleweeds was born, gives steps for making sailboats out of corks and other household items.

None of these forms of learning, let it be noted, are particularly "alternative" historically, though they seem more radical these days when it seems nothing is real that can't be quantified. These suggestions are not just for children. I need to remind myself of points raised in every one of these articles, particularly in the home stretch before publication: Move! Stretch! Get outside! Use your senses! Be creative! Look around!

Sooner or later, the pendulum will swing back again from its current emphasis on skills measured in standardized tests. For my money, it'll be none too soon. In the meantime, you are your child's best resource for putting testing into healthy perspective. Remind them — and yourself — that standardized tests are just one measure of success. Enthusiasm, creativity, pleasure in reading, and the thrill of learning something new, are just as real as percentile ranking.



ARCHITECTURE DESIGN COMMUNITY ENGAGEMENT COLLEGE CREDIT

**SFAI DESIGN WORKSHOP**

A college prep, project-based summer intensive for high school students  
June 1-July 9, Mon-Thu, 9am-4pm, SFUAD Campus & Santo Domingo Pueblo

**S F A i**

**ENGAGE. THINK. BUILD.**

APPLY NOW  
DESIGNWORKSHOP@SFAI.ORG  
SFAI.ORG/DESIGNWORKSHOP  
505.424.5050

# Dear Tumbleweeds

## Welcome, Smokey!

I'm writing to commend Devi Borton on her article, "Transformation" (Winter 2014-2015). What a beautifully written story of Devi and her family's support for the transition to fully embrace their daughter, Smokey Violet.

Their family is a true example of complete love and acceptance. I'm inspired by their commitment to learn, understand and support their transgender child. They have done the work we are called to do for love and family: Commit to the full acceptance of each beautiful individual that comes into our lives.

I hope to be able to offer my children the same virtues in their lives, and I hope my children grow up knowing they are loved and accepted as much as Smokey Violet does. My heart aches for any child in this situation who has to carry the burden of their family's shame, grief and confusion about how to accept them.

Kudos to Devi Borton and her family, and welcome to the world, Smokey Violet. I'm truly inspired by your courage, love and beauty.

- Abby Bordner, Santa Fe



"Balance," by Coben Branch, age 13

Come see the  
difference. Schedule  
your visit today!

505.983.8212  
316 Camino Delora  
At the top of Canyon Road  
A modified Montessori School  
for children ages 2 to 12



Desert  
Montessori  
School



www.desertmontessori.com

BRINDLE  
FOUNDATION

KSFR 101.1  
FM  
Santa Fe Public Radio

CHRISTUS ST. VINCENT  
Regional Medical Center

Schwanfelder  
Family

Tumbleweeds



ENDING HUNGER  
IN NORTHERN NEW MEXICO

The Food Depot recognizes that limited access to diapers poses serious health risks and economic consequences for babies and families. For this reason, The Food Depot specifically collects diapers and infant supplies to distribute to families via a network of partner agencies.

Good nutrition is vital  
for an infant's  
brain development.



HUNGER IS CLOSER  
THAN YOU THINK

Donate Now!

www.thefooddepot.org

## Where Is Our Child Care Now?

The eternal shortage of infant and toddler care • By Claudette E. Sutton

**When you're expecting a baby, there are two things of which you can be absolutely sure.**

First, your baby will be the most adorable in the history of the world.

Second, if you plan to return to work in the next year or two, your options for child care will be few, expensive and hard to find.

"I have had more parents in my office crying about this problem than I can even count," said Leigh Fernandez, who for several years directed the Early Childhood Training and Technical Assistance Program at Santa Fe Community College, which included a child care referral program, and who is now an early childhood consultant for the UNM Northern Training and Technical Assistance Program and an adjunct faculty member at SFCC.

"If you're 3, the world's your oyster," Fernandez said, noting that Santa Fe has numerous preschools from a variety of orientations. "For 2-year-olds, the options are scarce, and 12 months and younger, incredibly scarce."

Several programs serving infants and toddlers — including ones at Episcopal Church of the Holy Faith, St. John's United Methodist Church and SER Jobs for Progress — have closed in the past few years, without new ones emerging to take their place. Some schools, such as Garcia Street Club and Children's Garden Montessori, have opened toddler classrooms to help fill the niche, but working parents who need care for their infants and toddlers face ongoing challenges of access and cost.

Why so ongoing? Tumbleweeds addressed this problem about 20 years ago in the article, "Where, Oh Where, Is Our Child Care?" In the intervening decades, as the number of working parents has increased, why hasn't a competitive industry emerged to meet their needs?

"Providing quality infant care is incredibly expensive," Fernandez explained. While all Santa Fe businesses must deal with high rents, the biggest expense for centers, inevitably, is staffing. New Mexico regulations allow a ratio of six children for every adult working in a licensed child care center, but at the higher-rated programs it's either three or four children to one adult. Home care providers who are licensed by the state can have up to six children at a time, but no more than two of these can be under the age of 2. It is difficult for providers to charge enough money to make infant and toddler care viable for them financially, without pricing themselves out of the budget of parents who require child care so they can return to work.

"There's really no simple solution," Fernandez said, noting that the problem is not unique to Santa Fe. "There is always an assumption that parents should just stay home when their children are young. Yes, that is nice, but that's not an option for everyone. And some people don't want to stay home, which is okay, too."

So what do working parents of very young children do?

For low-income families, Head Start and Early Head Start provide child care and social services for children from birth to age 5 — provided the families meet income guidelines and there are spaces available.

Others must vie for space at a handful of centers that accept infants and toddlers, or find a suitable home child care program.

Still others rely on friends and family members. Perhaps Mom watches the baby on her days off and Dad on his, and Grandma or a neighbor takes another day or two. Sometimes one parent works the night shift and the other works days. "Whether this is best for the child, I don't know, since we hear that



Dean Pester enjoys his breakfast at Santa Fe Community College's Kids Campus Child Care Center.

Photos by Nina Bunker Ruiz



consistency is important for very young children, but this isn't always feasible," Fernandez reflected.

Some parents make the painful discovery that infant care costs more than what they can earn at their job. "You kind of straddle that line, because you can't afford to stay home, but you can't afford to pay child care," Fernandez said.

Whoever you find to care for your baby, you should vet them carefully, Fernandez urged. Here are her suggestions for ensuring that your child is in the best care possible:

- **Listen to your gut.** "It sounds a little trite, but I still encourage parents to follow their instincts," Fernandez said. "I can't just say, 'Look for this, this and this,' because children are individuals and you've got to find what will work with your child. And you *will* know when you see it."
- **Start early.** If you know you will be returning to work soon after your baby's birth, begin looking for care as early in your pregnancy as possible. Familiarize yourself with the options. Get your name on a couple of waiting lists, even if they charge a fee, Fernandez advised. "Don't just pick one option and hope."
- **Observe different programs.** How do you feel as a parent when you walk in? Would you want to be there as a child? If a program director balks at letting you observe, that's a red flag.
- **Do a formal interview.** Ask providers about their experience and education. Ask them to describe a day in their program. Do they have liability insurance? Do they have a schedule for snack time, playtime, and a rest period or naptime? It might be a very simple schedule, but there should be some sort of guide. How often, if at all, do they use the television?
- **Watch the children.** "Are they busy, happy, laughing, engaged?" Fernandez asked. "Maybe the room is a little messy, and the toys are homemade, but if the kids are having fun, that's a good sign. If the babies are all in their cribs at the same time, and they're not sleeping, I would want to know why. I want to see them playing on the floor, being held, being interacted with a lot. A *lot*."



- **Watch the adults.** "For my money, the most important thing is how the adults are interacting with children," Fernandez said. "What is their tone of voice? Is it kind, warm and loving? If it's harsh while you're there observing them, nine times out of 10 it's worse when you're not there! On the flip side, if you walk in and you're the most important person in the room, not your child, that's a red flag, too."
- **Ask for references.** "I *always* recommend asking for references. Even with an unregulated child care [in the provider's home, unlicensed or registered], I would still encourage families to ask for references."
- **Communicate.** Whether you put your baby in a child care center, an in-home program or with a family member, keep up an active dialogue. Tell the caretaker about changes in your child's life. Ask them to keep you updated on how your child is doing. Ask them to take short videos or pictures of your child on their phone, so you can get a feel for how they are doing are when you're not around. "Parents often tell me, 'I don't want to bother them,'" Fernandez said. "I tell them: Bother them. You're not dropping off your car to be repaired. This is your child."

On the bright side, while the number of infant and toddler programs may continue to fall short of need, the level of care in programs we *do* have is good, Fernandez said. "Overall, the quality of care that infants are getting in Santa Fe, at least by the regulated providers — the registered centers and family home child care programs — is generally very good. Parents are getting more educated about what they want, and our standards have gotten much higher. Awareness is growing about the birth-to-3 crowd, and all the science is there — that's the hip new thing — so maybe we'll get what we need eventually."

Putting your baby in someone else's care is never easy in the best of circumstances, Fernandez said. "You could have the be-all-end-all person — you could have Mary Poppins — and as a new parent you would still feel, 'Oh, God, this is my baby! You still have that angst.'"

Angst. That's another thing every new parent can be sure of.

## Resources:

- **New Mexico Child Care Assistance Program** subsidizes the cost of child care for low-income families. Go to [cyfd.org/child-care-services/child-care-assistance](http://cyfd.org/child-care-services/child-care-assistance) for an application, available in English and Spanish; the site provides a list of regional field offices. Or, contact Jolyne Vigil at (505) 827-7499, 1-800-832-1321 or [jolyne.vigil@state.nm.us](mailto:jolyne.vigil@state.nm.us).
- **New Mexico Head Start** provides pre-school and related social services to low-income children ages 3 to 5. Early Head Start serves low-income infants

and toddlers. Fernandez encourages applying for the program even if think you don't qualify.

- **New Mexico Kids Child Care Resource and Referral**, a program of the University of New Mexico Division of Continuing Education, is an excellent resource for parents, child care providers and educators. Their extensive website includes a state-wide database of child care pro-

viders, tips for choosing a program, training and other resources for providers and educators, guidelines in early childhood learning and much more. Go to [www.newmexicokids.org](http://www.newmexicokids.org), or email [support@newmexicokids.org](mailto:support@newmexicokids.org).

- **UNM Northern Training and Technical Assistance Program (TTAP)** provides a variety of services to early childhood professionals and families in 13 counties: Santa Fe, Rio Arriba, Los Alamos, San Miguel, San Juan, McKinley, Cibola, Colfax, Harding, Taos, Torrance, Union and Mora. Call Leigh Fernandez, (505) 428-1344.

## POMEGRANATE SEEDS WORLD DANCE CAMPS FOR GIRLS

**Self Esteem, Empowerment & Education through Dance for girls ages 10 to 16.**

Learn world dance, sew a costume piece, stage make-up, history, culture, costuming and film, journaling, poetry, art, talking circles.

**Camp 1: July 13th -17th, Camp 2: July 20th - 24th, Camp 3: July 27th - 31st.**

Camps are Monday through Friday 8:30 a.m. to 5 p.m. \$235 plus tax per week and materials fee.

Contact Myra Krien, 986-6164 or email: [pomegranatesfm@yahoo.com](mailto:pomegranatesfm@yahoo.com)



brain gym four day school week individualized learning weekly packets

multi-age classrooms art music no text books

brain/body integration latin seasonal concerts

# FAYETTE

a nurturing and academically rigorous elementary/middle school in Santa Fe, ages 6-14

[www.fayettetstreetacademy.org](http://www.fayettetstreetacademy.org) get to know us on FB

[info@fayettetstreetacademy.org](mailto:info@fayettetstreetacademy.org)

bal-a-vis-x tree climbing course greek poetry chinese daily laps

## EARTH DAY, ART DAY, EVERY DAY

Creativity and observation support the first stages of literacy • By Judith Nasse

### Mrs. Garcia, who

had a tendency to over-worry about her 4-year-old daughter Olivia's progress, cornered Ms. Julia at pick-up time, "Why so much emphasis on all this art and Earth Day? I see Olivia always wanting to try out her letters and write. Shouldn't preschool focus on that?"

Many parents share Mrs. Garcia's concern, and many schools, even preschools, *do* now emphasize the academics more than the arts. Each district has state standards to follow, as well as limited budgets that make it increasingly hard to fit the arts into the curriculum.

Historically, however, art existed long before written language. Art existed long before schools, reading or writing and is still a universal language. Just imagine Early Man communicating through pictures in cave art, pictographs and petroglyphs. Even today, anywhere in the world that you see the symbol of a woman on a door, you know that it is probably a restroom even if you can't read the foreign words next to it.

Our little ones learn the symbols and colors of familiar things before they learn the written words for them. They begin to draw the pictures for, say, a circle, a house, and later a person, cat or car, as part of the progression of learning that leads to the mastery of reading and writing. In other words, art and symbolism are the first stages of literacy.

We are all creative beings. Just look at children constantly creating and re-creating in their play. They make up songs and plays, experiment with materials, especially art media, and make up stories.

Olivia loves making up stories. She pretends to put words and letters on paper as an early form of

Joyful, joyful we adore our Earth in all its wonderment.  
Simple gifts of nature that all join into a paradise.  
Now we must resolve to protect her.  
Show her our love throughout all time.  
With our gentle hand and touch  
We make our home a newborn world.  
Now we must resolve to protect her  
Show her our love throughout all time.  
With our gentle hand and touch  
We make our home a newborn world.

– *Earth Day Anthem* by William Wallace

writing her stories. In Ms. Julia's preschool, the teachers write down some of the stories that the children dictate about their art, even if it is only one word at first, such as "snow." Each child has his or her own sketchbook, and the dictated words are written at the bottom of the art or on the back. Older preschoolers may copy over the teachers' printing. Olivia and her friend Maya love to sit in the book corner and "read" their stories to one

another. From this stage, children go

on to reading and writing in grade school, as they become ready developmentally.

How does Earth Day fit into art and developing literacy? Can a preschooler like Olivia grasp such a large concept as a day devoted to our planet? For preschoolers, it is not about learning the broader concept of Earth Day but rather about developing a greater ability to observe the world around them in all its glorious detail and then translating those observations into art, stories, games and music. This process enhances preschoolers' ability to see themselves as a part of the greater Earth and to consider what their place in the world may be. A great part of being an artist, writer, scientist or mathematician lies in the power of observation.

When Ms. Julia taught first grade many years ago, she had a little boy named Jeremy in her class. His father, a policeman, wanted his son to read and write *right now*. That pressure created a block to learning. Jeremy was keen on birds and birdwatching, which he learned from his uncle, Bert, a park ranger. Ms. Julia began putting up pictures of birds around the room, and Jeremy went around naming them: "magpie, raven, jay, sparrow," and so forth.



Then, a few days later she put the word “bird” underneath each picture, and then a few days later, the name of the particular bird. When she didn’t know the name of a bird, Jeremy taught her! Soon he was drawing birds in his sketchbook and dictating his story about them underneath the drawing. Eventually he wrote his own bird narratives. Jeremy’s real passion was observing birds and becoming a bird expert. That type of discovery is as much a part of Earth Day as the larger concept of honoring this planet Earth and allows literacy to develop in ways that are meaningful and ultimately more effective.

Try some of these Earth Day projects, observations and art activities:

- **Take a nature fieldtrip.** What nature activity is your child interested in? If it’s animals, then make a trip to the ABQ Biopark Zoo or Aquarium, or the Rio Grande Nature Center (see article by Gloria Fournier Valdez on page 22). If it’s dinosaurs or rattlesnakes, visit the New Mexico Museum of Natural History and Science or the American International Rattlesnake Museum, also both in Albuquerque.
- **Observe rocks and geological strata on walks and drives around New Mexico.** Bandelier National Monument, Rio Grande Gorge and Kasha-Katuwe Tent Rocks National Monument are all wonderful places to observe natural formations of our local geology, just a short drive away.
- **Visit my preschool page on Pinterest.** The first 15 pins are about Earth Day and related projects including mud painting, bird feeders, planting seeds, etc. [www.pinterest.com/jnasse/for-preschool/](http://www.pinterest.com/jnasse/for-preschool/).
- **Copy maps of Santa Fe, or your town, onto card stock.** Then let children decorate their place on

earth with paint, colored pencils or crayons.

- **Sing the lyrics to the Earth Day Anthem (previous page).** The melody is Ludwig Van Beethoven’s “Ode to Joy.” For a PDF of the sheet music, go to [www.easybyte.org/odetojoy/odetojoy5a.pdf](http://www.easybyte.org/odetojoy/odetojoy5a.pdf).
- **Read books that celebrate our natural world.** *Call Me Tree Call Me Tree* (CBP, 2014); *I Know The River Loves Me* (CBP, 2013); and *My Colors, My World* (CBP, 2013), by Maya Christina Gonzalez, are delightful bilingual English/Spanish picture books. Look for *Luna and Me: The True Story of a Girl Who Lived in a Tree to Save a Forest*, by Jenny Sue Kostecki-Shaw, to be published in May by Henry Holt and Co.
- **When outdoors, play “I Spy.”** For example: If you see a roly-poly you might say, “I spy with my little eye something that rolls into a ball when it feels threatened.” If you see a flock of ravens you might say, “I spy with my little eye black wings surfing the sky.” This looking-and-guessing game helps children develop observational skills. Pretty soon they’ll be having you see things you hadn’t seen!

- **Check the Tumbleweeds calendar.** See page 32 in this issue and go to [www.sftumbleweeds.com](http://www.sftumbleweeds.com) for family events this spring. The official Earth Day is April 22, though any day is a good day to honor our home planet. Have a Happy Earth Day!

.....  
*Judith Nasse runs Rocking Horse Preschool in Taos, where she also writes, illustrates, and enjoys nature.*



Maxwell Meiklejohn, opposite page and above, celebrates Earth Day in the most literal way.

Photos by Nina Bunker Ruiz

# Open House!

Saturday, March 21, 10 a.m. - 12 p.m.

## Journey

Montessori School

Studying the Valles Caldera 2014

**Elementary Montessori for 6 - 12 year olds**  
*Outdoor Program • Suzuki Violin • Spanish*

Take a journey with us!  
 Meet our teachers, watch a slide show,  
 share refreshments and ask about our  
 Summer Session.  
 1212 Unity Way

JourneySchoolSF.org    505-470-8928

Supercalifragilisticexpialidocious!

Pandemonium Productions

Presents

# MARY POPPINS

May 8, 9, 10 & 15, 16, 17

Fri & Sat @ 7:00pm, Sun @ 2:00 pm

@ James A. Little Theatre

Call 505-982-3327 for Tickets and Info

www.pandemoniumprod.org

# USE IT or Lose It!

Early activities support brain development and lifelong learning

By Patricia Lord

**As a mother and pediatrician with a subspecialty** fellowship in Behavioral and Developmental Pediatrics, Dr. Susan Johnson knows a bit about the impact of active engagement on children's brain development. But it wasn't until she took a plane trip with her 3½-year-old son to Boston that she really began to connect the dots between external stimulation and imagination and their impact on brain development.

On that trip, her son watched an action movie, "Mission Impossible." The film was playing right above the child's head, making it difficult to block out. He wasn't using earphones, so the impact was strictly visual. Nevertheless, he had nightmares and fears about fires and explosions for the next six months,

and his play profoundly changed. Ignoring her friends who wrote off her son's behavior as that of an oversensitive child, Dr. Johnson began to wonder what happens to a developing child presented with overwhelming sensory stimuli.

There has been an abundance of research in recent years on children's brain development. We know, for instance, that an infant is typically born with 10 billion nerve cells, or neurons, and spends the first three years of life adding billions of support cells to nourish these neurons and formulate interconnections throughout the brain. The "exercising" of these interconnections helps facilitate the development of skills such as language, memory and motor coordination.

Neurological interconnections are strengthened through a child's use of imagination, trial and error, vocalization that mimics speech and other ambient sounds, and movement of the body through space. Activities like these ultimately help build a neurological framework that will serve the child throughout life: development of the senses, coordination and balance, a sense of the body in three-dimensional space and, ultimately, the ability to learn, reason, perceive, intuit, empathize and sympathize. Potential for creating these interconnections is strongest in the early years and seems to narrow beginning near age 10, when the child starts to lose significant capacity to develop neural pathways that have not been "exercised."

Dr. Johnson assessed children ages 8 to 11 who had difficulties with reading. They had trouble making a mental picture of letters or words. While they could identify letters from a series in front of them, they were unable to write a letter without a visual cue. They did not appear to have the ability to recall or imagine what the letter would look like. Each of these children were watching television and playing video games for hours each day at their respective homes. Dr. Johnson began to wonder if there was a connection between the abundance of external auditory and visual stimulation and the development of children's brains.

She concluded that children who are overfed with technology and external stimulation, at the expense of engagement with nature and their own imaginations, under-develop neural pathways that they are not using. Thus, they can squander opportunities to cultivate their capacity for creative thought. In contrast, movements of our bodies combine with experiences of our senses to build strong, diverse neural pathways and connections.



Photo courtesy of Santa Fe Waldorf School

Eurythmy, an expressive movement technique created by Rudolph Steiner, reinforces connections in both hemispheres of the brain. It's also fun.

She found that the full development of two physical attributes in particular — the sense of balance and proprioception (the awareness of our body in physical space) — are strong indicators that a child's brain is ready to acquire academic skills efficiently. Sufficient development of these attributes allows the child to remember shapes of letters and numbers, pay attention, focus and notice nonverbal social cues given by other children and adults.

Likewise, a child with less development of proprioception sometimes has a hard time remaining upright in a chair. Instead, he wiggles and leans to help his brain perceive the position of his body in physical space. Such a child is also likely to have a hard time holding a crayon or pencil. Social and emotional behaviors of these children parallel the development of their proprioceptive systems.

This system of balance and relationship to space is both developed and strengthened through physical movement. Movement works like a gym for the brain, strengthening right/left interconnections in the brain. Daily activities and games such as moving rocks, hanging from monkey bars, participating in circle games that involve clapping, jumping, skipping and so on are particularly effective in reinforcing the sense of balance and proprioception. Many early learning and elementary programs include these types of activities and games, which, while playful, also lay important cornerstones for brain development and learning.

Eurythmy, an expressive movement technique created by Rudolf Steiner, is a more formalized and intentional approach that reinforces the interconnections in both hemispheres of the brain. With exercises to develop balance and rhythmic move-

ment with speech and music, eurythmy uses bodily movement to reinforce brain development and support a variety of important areas of learning such as vocabulary building, reading, comprehension and math.

Neurologically speaking, eurythmy helps create a rich network of synaptic connections. A dance-like art form, eurythmy utilizes bodily movement and music or speech, with specific movements that correspond to particular notes or sounds. In eurythmy class, children may engage in "concentration exercises" where they walk and coordinate hand movements to counting or speaking. In one such exercise, the child steps for four beats, taking a backward step on one of those beats. In each series, the backward step is on a different beat: on beat one for the first series, then beat two in the next round, then three and four for the remaining series and then back to one. After children learn the sequence, it can be sped up. Then groups of children next to each other can do it in tandem with variations. Mastering these exercises requires tremendous focus so as not to be distracted by the movement or missteps of others.

Where eurythmy is an integrated part of the curriculum beginning in kindergarten, as in Waldorf schools, children learn through eurythmy to move together with others. Because most early eurythmy work takes place in a circle, children learn that they can only move right or left if they wait for their neighbor to move. Children learn to move inward and outward from the circle together. As the eurythmy curriculum becomes more complex through the years, students may learn to move around seven-pointed stars and other complicated patterns, always with "the other" in mind, pro-

gressively more in harmony with the movements of fellow students. The students develop a sense of where they are in space and how they relate to others. It's interesting to note that many Waldorf schools throughout the United States field surprisingly successful sports teams despite their relatively small number of students. This success may be attributable to the students' ability to move harmoniously in a group, an ability that the girls and boys develop in eurythmy class.

Furthermore, eurythmy deepens children's experience of poetry and music by helping them develop an inner and outer grace, aesthetic sensibility and feeling for social harmony. Eurythmy's work with rhythm and geometry can aid the children in their study of mathematics and in developing good focus and improved concentration as well.

Susan Johnson and Melody Van Hoose, Eurythmy Director for Santa Fe Waldorf School, will present a lecture and demonstration for the public on April 17 from 2:30 to 5 p.m. at Santa Fe Waldorf School, 26 Puesta Del Sol, Santa Fe. Space is limited. The fee is \$15. Their presentation will address the brain development of children and the role of eurythmy in reinforcing and strengthening the brain's pathways and examples of what you can do to support your child at home. Support from The Association for Therapeutic Eurythmy of North America is helping make this workshop possible. Complimentary childcare is available for reservations made by April 13. For more information, call Santa Fe Waldorf School (505) 983-9727 or visit [www.SantaFeWaldorf.org](http://www.SantaFeWaldorf.org).

*Patricia Lord is the director of development and marketing for the Santa Fe Waldorf School.*

## GROW, CREATE & EXPLORE

*with those you love*



JUNE 29 - JULY 5

## FAMILY WEEK

Provides rich and endless opportunities for families of all shapes and sizes to enjoy time together in learning, creative arts, play and adventure! Choose the activities that fit your families individual interests to get the most out of your time spent together.



**GHOSTRANCH.ORG**  
for more information

## The Santa Fe Children's Museum

is celebrating 30 years  
WITH A YEAR OF CELEBRATIONS:

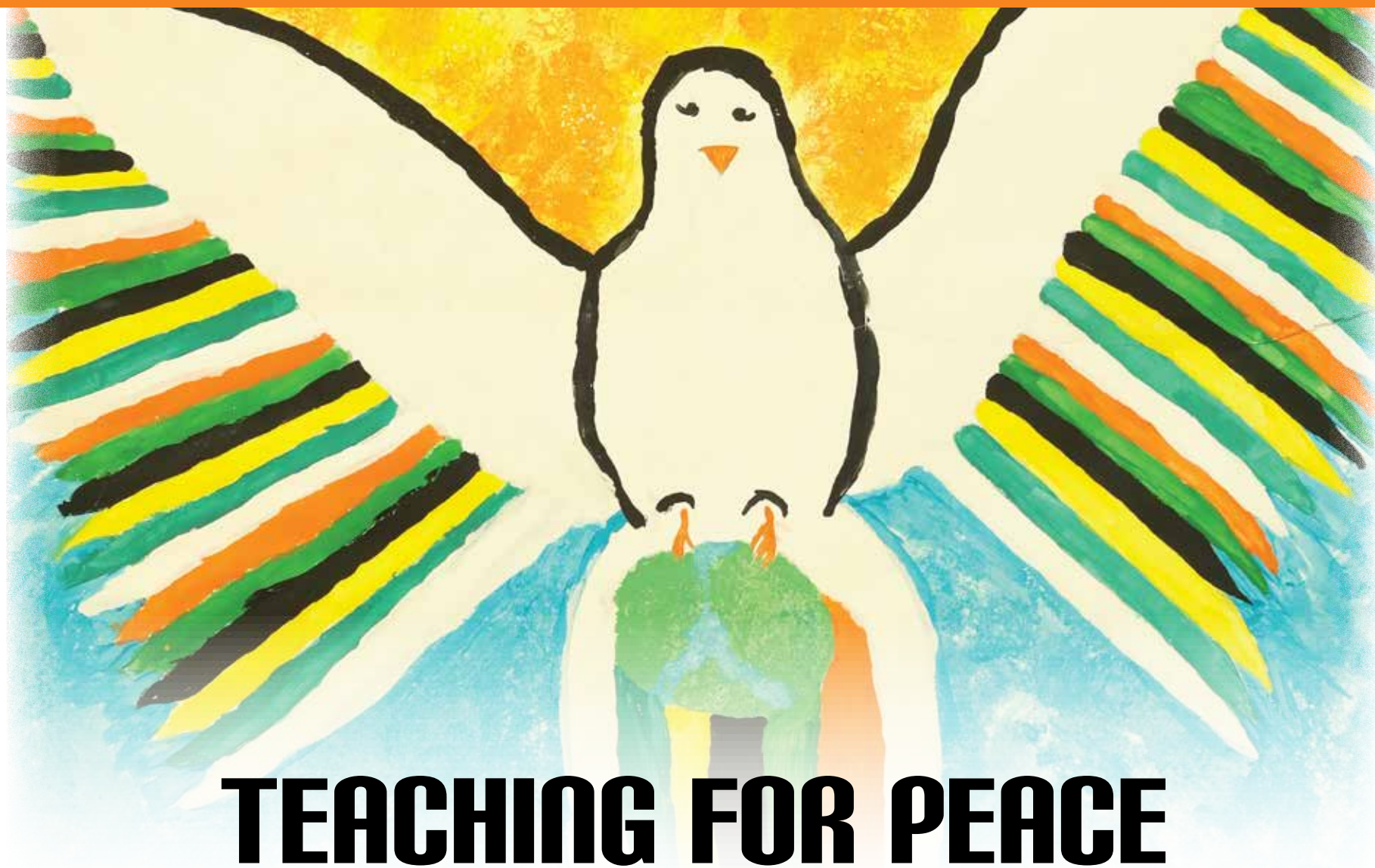
- #1. Chinese New Year - Feb. 21st \* #2. Pi Day - March 14th \* #3. Make Your Own Holiday - March 22nd \* #4. LEGO Founder's Bday - April 4th \* #5. Look-A-Like Day - April 19th \* #6. Arbor Day - April 24th *plus 24 more!*



*Thank you Santa Fe!*

1050 Old Pecos Trail Santa Fe, NM | 505-898-8359

[www.santafechildrensmuseum.org](http://www.santafechildrensmuseum.org)



## TEACHING FOR PEACE

Santa Fe's new International Baccalaureate school educates the whole person for the whole world

Story and photo by Nina Bunker Ruiz

**“This is a thinking person’s curriculum,”** Tony Gerlicz said emphatically in describing the new Mandela International Magnet School (or MIMS), Santa Fe’s first public International Baccalaureate school.

MIMS is in its first year, serving its first 100 seventh- and eighth-grade students. After hearing from a special taskforce and evaluating feedback from the community throughout 2012 and 2013, Santa Fe Public School Superintendent Joel Boyd proposed the idea of an International Baccalaureate magnet school as part of his Secondary School Reform plan. Boyd asked Gerlicz, founder of Monte del Sol Charter school, to launch the new school, which opened in August.

For now, the school has five full-time and two part-time teachers and is housed in De Vargas Middle School, though eventually it may have its own building. Each year 50 new seventh-graders and another grade will be added as the oldest students move up to the next level until, in four years, the school will serve grades 7 through 12.

International Baccalaureate (IB) schools differ from standard public schools in several ways. The nonprofit International Baccalaureate organization, headquartered in Geneva, has designed an educational framework with the intention of teaching young people to be agents for positive change, locally and globally. As the organization’s mission states, an IB school “aims to develop inquiring, knowledgeable and caring young people who help create a better and more peaceful world through intercultural understanding and respect.” Perhaps any teacher and school administrator would hope to have students who fit this description, but IB schools take the intention further by developing specific guidelines and curricula geared to foster global awareness and citizenship. Here

in Santa Fe, MIMS has adopted the slogan, “Educating the Whole Person for the Whole World.”

The seminal structure for IB schools came in a handbook written for UNESCO in 1948 by the head of the International School of Geneva, Marie-Thérèse Maurette, entitled: “Educational Techniques for Peace: Do They Exist?”

In this report, Maurette detailed the principles and practices she used as headmaster of the Swiss school in the face of the chaos and violence of World War II. In the mid-1960s, a group of teachers from the school began to develop Maurette’s ideas into a framework that would become known as the International Baccalaureate Diploma Programme. IB schools have been growing in number and popularity, nationally and internationally, ever since.

Gerlicz, MIMS’s principal (or as he prefers to be called, “principal learner”) explained that the school was named after the late civil rights activist and South African president Nelson Mandela for a number of reasons. In addition to his devotion to equality, democracy and learning, Mandela had his own connection with an IB school. During his imprisonment, he sent his daughters to the United World College in Swaziland and later became the honorary president of that IB school.

Mandela’s portrait adorns prominent places throughout the building, and his wisdom graces MIMS’ halls and classrooms, the school’s calendar and its handbook. The school curriculum incorporates the book *Mandela’s Way: Fifteen Lessons of Life, Love, and Courage*, which includes ideas such as “Courage is not the absence of fear,” “Have a core principle,” “See the good in others,” and the concept of *ubuntu*. *Ubuntu* is an ideal Mandela adopted from his mentor Desmond Tutu, who defines it as “the profound sense that we are human only through the humanity of others; that



Opposite page: "Peace," by Arianna Gomez, age 13. This page: Principal Learner Tony Gerlicz and students prove it: Mandela International Magnet School's curriculum is for serious thinkers.

if we are to accomplish anything in this world, it will in equal measure be due to the work and achievement of others. *Ubuntu* speaks particularly about the fact that you can't exist as a human being in isolation. It speaks about our interconnectedness. You can't be human all by yourself."

Admission to MIMS was initially slated to be exam-based. This idea didn't sit well with Gerlicz for two reasons. First, he knew that the IB program already drew criticism for being what some viewed as elitist. Second, he felt an admissions exam would be out of keeping with the IB principals of inclusivity and diversity. Gerlicz insisted on a lottery offering 10 spots to each of the five election districts within the Santa Fe public school system. This geographic diversity, he believed, "would ensure every other kind of diversity." Indeed, walking the MIMS halls at passing period reveals an impressively heterogeneous group of students, especially for a school of its small size.

"This is a thinking person's curriculum," Gerlicz repeated, pulling out the school's handbook and directing me to a page entitled, "The IB Learner Profile." He explained that teachers rank a student's performance on a spectrum of a "beginning" score of one to the "exemplary" score of seven.

Reading down the list of different profiles and what is expected of an exemplary performance helped me understand how an education at MIMS might be different from what most of us experienced in middle and high school. Rather than simply receiving 75 percent on an algebra test or a "B" on an English essay, a MIMS student is ranked

on a series of qualities such as inquiry, knowledge, communication, open-mindedness, risk taking and reflection. An exemplary student, for example, demonstrates that he or she: produces high-quality, frequently innovative work; communicates comprehensive, nuanced understanding of concepts and contexts; consistently displays sophisticated critical and creative thinking; and frequently transfers knowledge and skills with independence and expertise in a variety of complex classroom and real-world situations.

When asked how students are managing the rigorous IB curriculum and high expectations, Gerlicz smiled and reported: "They've been telling us they're challenged."

Along with the support it receives from the Geneva headquarters, MIMS is also partnering with Project Zero, an educational research group at the Harvard Graduate School of Education, which examines the development of learning processes in children, adults and organizations. Although MIMS is still in its infancy, it received a three-year grant from Project Zero. Researchers from the project work with MIMS faculty, as Gerlicz puts it, "[to] help us teach kids how to think." Before school commenced last August, two Project Zero researchers spent three days with staff hashing out what Gerlicz referred to as "thinking routines." Since then, a researcher has been working on a regular basis with faculty in the classroom.

Aside from all this outside support, MIMS students are also each issued their own laptop. They get structured academic support, and they can even

take Mandarin as their foreign language class.

"We've already seen great progress — academic growth and growth in their thinking," Gerlicz reflected. As both Santa Fe's first public International Baccalaureate school and a project that resulted from the community's feed-

back about secondary school reform, many will be watching Mandela International Magnet School's trajectory as it grows to its full seventh-through-twelfth grade capacity.

*Nina Bunker Ruiz is Tumbleweeds' staff writer and editor.*

## MOUNTAIN KIDS!

LET YOUR KIDS OUT TO PLAY

SUMMER 2015 SCHEDULE NOW ONLINE

[WWW.SFMOUNTAINKIDS.COM](http://WWW.SFMOUNTAINKIDS.COM)



**NEW PROGRAMMING FOR 2015!**

- BACKPACKING & OVERNIGHTS
- ADVANCED SURVIVAL SKILLS
- PLEIN AIR ART ADVENTURES
- MOUNTAIN BIKING
- PHOTO SAFARI
- FIRST ASCENT
- NM HISTORY
- & MORE!

**NOW IN OUR SEVENTH YEAR OF OFFERING OUTDOOR FUN AND LEARNING ADVENTURES YOUR 5-12 YEAR-OLD KIDS LOVE!**



## School in the

# CLOUD

YouTube, generosity and ingenuity link students around the world

by Perli Cunanan

### When Gary Fulreader, a

middle school math teacher at Santa Fe School for the Arts & Sciences (SFSAS), started filming his algebra instruction three years ago as an educational enhancement tool for his students, he never imagined that students on another continent would be tuning in. He was pleasantly surprised in November 2014, when Gladys Pienaar of 2enable.org reached out to him. This nonprofit organization works to deliver meaningful content free of charge to all South Africans to address the dire standards of education in the country, and Pienaar saw Fulreader as a great resource.

"I wanted to give my students an extra resource, especially for new concepts that were in the homework," explained Fulreader, who is in his eighth year teaching at SFSAS. "I am happily surprised that other kids and teachers are finding it useful. In fact I get positive comments each week from kids all over the world who are actively watching my videos. The coolest thing of all is that my students now feel like they are actively participating in making a difference in world learning."

Because many poor rural South African communities have limited bandwidth for streaming the videos, Pienaar contacted Fulreader for permission to download the content. Fulreader and SFSAS granted the organization international use of the videos so that eventually this "school in the cloud" could be rolled out to other countries.

Now, students from all over the country and the globe subscribe to his YouTube channel and enjoy connecting through the comments section. Karim Elmazaty wrote, "I just subscribed. I think you're brilliant. I wish I was in your class." Fulreader wrote back, "Hi Karim, thanks so much for your kind words. I wish you were my student, too! I'm happy to hear that you found this useful. It always makes my day when I hear this, so thanks for making my day! Keep up the great work, buddy!"

Parents also write to Fulreader: "Mr. Gary, I just subscribe to your channel. I am a single parent of a 13-year-old who is having math problems. I seen some of your videos. They are very good. I thank you. Any suggestion to use your channel more efficiently? Thank you for your contribution to kids ... Jorge."

Gary wrote back, "Hi Jorge, thanks for your nice comment. I'm very glad you find them helpful. What is your child studying in math right now? Pre-algebra? Algebra 1? The key to using my channel efficiently is to know what the particular math is called. If you have trouble finding something, you can always let me know, and I can search for you. Sounds like you are a great dad! Keep up the awesome work!"

Nathan Moore, who teaches science, algebra and STEM (Science, Technology, Engineering and Math) in the SFSAS middle school, is also a contributor to the school's math-focused YouTube channel. The public channel has 319 videos on topics that include Solving Linear Systems by Substitution, Graphing Quadratic Equations, and Solving "Work" Word Problems. The channel currently has 519 subscribers and has had 92,091 views.

Middle school students at SFSAS said they feel connected to the students who watch their math classes on YouTube, even though they are on the other side of the world. "You can hear us, our questions and our comments," said seventh grader Mira Venkatesh, age 12. "I feel connected to people watching around the world, because I used to live in India, and it would have been cool if I had these videos back then."

"Gary makes math fun," chimed in Leila Pierpont, age 13.

"It's really cool that we can help kids who are on the other side of the world. It's like we are learning math together," said Anna Hansen, age 13.

"It's a rare, once-in-a-lifetime experience," said Gideon Buchleiter, age 13.

"It feels good to help people learn math," said Ben Wilson, age 12. "It makes us feel special."

Santa Fe School for the Arts and Sciences' principal Geetha Holdsworth summed it up: "A good education and access to knowledgeable, caring teachers are essential for every student's success. Gary and Nate's YouTube videos are a brilliant example of how teachers and nations can use technology to bridge together teachers and students for the betterment of all the world's children. This approach dovetails with our school's goals to connect globally and to serve students as best as we can."

*Perli Cunanan is the executive director of Santa Fe School for the Arts & Sciences, a nonprofit school for students preschool to eighth grade. To find Gary Fulreader's Math YouTube channel, search Gary Fulreader on YouTube, visit [www.santafeschool.org](http://www.santafeschool.org) or call 438-8585.*



Gary Fulreader's math lessons are available online to students around the world.

Courtesy photo



# THE SCHOOL OF ASPEN SANTA FE BALLET

Gisela Genschow, *Director*

Enrolling now for Summer Sessions!

**Classes start  
June 6, 2015!**

Santa Fe and Eldorado locations

Ballet  
Partnering  
Creative Dance  
Jazz  
Hip Hop  
Folklórico  
Adult Ballet  
Adult Flamenco



PLEASE REGISTER FOR SUMMER CLASSES ONLINE: [www.aspensantafeballet.com](http://www.aspensantafeballet.com)

550B St. Michael's Drive, Santa Fe, New Mexico 87505 phone 505-983-5591 fax 505-992-1027

PHOTO: ROSALIE O'CONNOR

## DOLLY PARTON IMAGINATION LIBRARY COMES TO SANTA FE

The Santa Fe County Community Services Department is partnering with the United Way of Santa Fe County to bring the Dolly Parton Imagination Library to families in the county.

Dolly Parton founded this program in 1995 to encourage reading among young children. The children of families that enroll in the program receive, by mail, books that have been carefully selected by a panel of experts. Each month from the time of birth until he or she is 5 years old, the child is given a new book, which is theirs to keep.

According to the 2013 Annie E. Casey “Kids Count” profile, only 46 percent of Santa Fe County’s fourth-grade students read proficiently. Research shows that children who have a good selection of books in the home start kindergarten with higher early language scores. The Dolly Parton Imagination Library program aims to help supplement home libraries, encourage enthusiasm for books and reading in children, and inspire parents to read to their children.

“We are looking forward to working in our community to enroll children across the county,” said Katherine Freeman, Chief Executive Officer of United Way of Santa Fe County. “It’s a natural fit with our early childhood and home visiting programs.”

The Santa Fe County Community Services Department has released \$50,000 to bring the Imagination Library to the county. United Way of Santa Fe will serve as the “local champion” by registering and enrolling children in the program. United Way anticipates enrollment to reach 525 children countywide by the end of 2015.

For enrollment in the Imagination Library, call (505) 216-2984.

## DESIGN FOR CHANGE

The Santa Fe Art Institute (SFAI) presents SFAI Design Workshop, a college preparatory, project-based summer intensive for high school students.

SFAI Design Workshop introduces students to architecture and design, and explores the question of how to work collaboratively to change the world. Hands-on skills, mentorship, design thinking and community engagement are at the heart of the workshop.

For the second year in a row, architect and designer Joseph Kunkel will act as lead faculty for SFAI Design Workshop. Kunkel is a practitioner of Public Interest Design, or the practice of designing with community. “Public Interest Design, also known as Impact Design, is rooted in the concept that design can be

used to create positive social, environmental and economic change,” says Kunkel. “It’s about examining and implementing ways in which design can create a better world through innovation and measurable solutions.”

Participants in SFAI Design Workshop will work in the design studio and onsite at Santo Domingo Pueblo. “Santo Domingo is a really special place because it allows for design, architecture and planning to be implemented within all of the various projects already taking shape there,” says Kunkel. “What’s really interesting is the history, hundreds of years of cultural development, in conjunction with the fact that Santo Domingo can be seen as a sustainable community. Working there allows students to create a cross-cultural connection and to start to understand how their skill sets can really affect change.”

SFAI Design Workshop will take place Mondays through Thursdays, June 1 to July 9, on the campus of the Santa Fe University of Art and Design and at Santo Domingo Pueblo. Students will receive three hours of college credit available upon completion. For more information, call (505) 424-5050, visit [www.sfai.org](http://www.sfai.org) or write to [designworkshop@sfai.org](mailto:designworkshop@sfai.org).

## TUMBLEWEEDS TURNS 20

Tumbleweeds turns 20 years old this summer! Our birthday festivities will include a joint celebration with the Santa Fe Children’s Museum (which turns 30 this year); and a photo retrospective at the Art Salon at Rock Paper Scissor Salon Spa, in Sanbusco Market Center. Details will follow in our summer issue, but in the meantime, *we need your photos*.

Throughout our history, literally thousands of children have been included in Tumbleweeds. If your child has been in our pages — either in a photo, article or artwork — please send us a current photo of your child or family, the image or article that ran in Tumbleweeds (or date of the issue), and a one-paragraph update on what your child is doing now, for the Rock Paper Scissor exhibit. Be sure to include your contact information.

Tumbleweeds would also love to honor the “long-timers” in the community — educators, program directors, doctors, counselors and others who have been serving children and families in our community for 20 years or more — with photos in the photo exhibit and Tumbleweeds articles. Please send a photo of yourself 20 years ago, a current photo and a description of what you are doing now.

If you have questions, contact Tumbleweeds’ editor Claudette Sutton at 984-3171, or [claudette@sftumbleweeds.com](mailto:claudette@sftumbleweeds.com).



Left: Francisco Uviña, faculty, and Justice Nwigwe, participant, onsite during SFAI Design Workshop 2014. Right: SFAI Design Workshop 2014 participants and faculty members completed a shade structure installation on the Santo Domingo Heritage Trail.

Courtesy photos

# Kids' Page

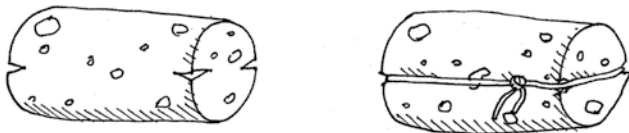
## smooth SAILING



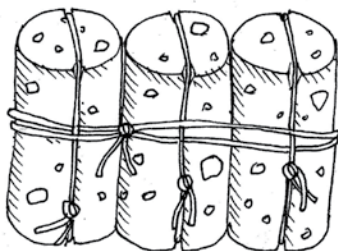
YOU WILL NEED:



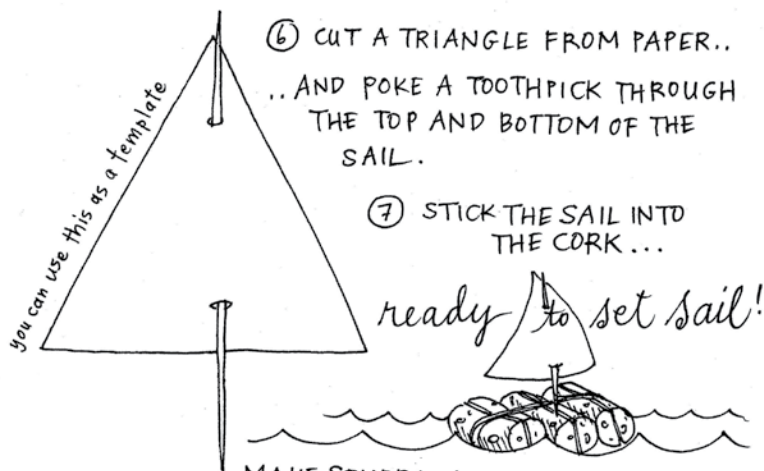
- ① CAREFULLY CUT TWO TINY NOTCHES IN BOTH ENDS OF EACH CORK.
- ② WRAP STRING OR THREAD LENGTHWISE AROUND EACH CORK & TIE A KNOT.



- ③ SET 3 CORKS NEXT TO EACH OTHER.



- ④ WRAP A LONG STRING OR THREAD (approx 16") AROUND THE THREE CORKS.— FIRST TIME, THREAD UNDER THE "vertical" STRINGS AND SECOND TIME, JUST WRAP AROUND EVERYTHING.
- ⑤ TIE A KNOT AROUND ALL THREADS TO SECURE.



MAKE SEVERAL BOATS.  
PAINT THE SAILS DIFFERENT COLORS.  
HAVE A RACE USING STRAWS TO BLOW AIR INTO THE SAILS.



The Birth Center  
at SOUTHWEST CARE

Natural child birth in a home-like setting.

The Birth Center at Southwest CARE offers prenatal care, out-of-hospital birth, comprehensive postpartum care, home visits, lactation support, and initial newborn care.

For more information please call 505-395-2311.



NOW ENROLLING FOR 2015/16 | Preschool - High School



2015/16  
FINANCIAL AID  
APPLICATIONS  
AVAILABLE



Santa Fe  
**WALDORF**  
celebrating inspired education

26 Puesta del Sol, Santa Fe | 505.467.6431

EXPLORE | [www.santafewaldorf.org](http://www.santafewaldorf.org)

# BUILDING SELF-ESTEEM FROM THE GROUND UP

Your passport to a happy life

By Shabd Simran Adeniji

## Positive self-esteem gives us the confidence to face life's

challenges and to feel worthy of respect and happiness. I know from research and my own observations that children who value themselves are more enthusiastic learners, more cooperative and more flexible in the classroom. Not coincidentally, they also are typically more successful academically. Children with strong self-esteem make friends more easily and are better able to maintain those friendships, which has been shown to be a protection against depression in later life. Children who have a strong sense of self cope better with the ebb and flow of life's stresses, including prejudice, addiction, heartbreak and even abuse.

As a parent, I have often wondered how to boost my child's self-esteem without letting it become self-centeredness or overconfidence. Training in Santa Fe County's United Way Positive Parenting Program, or Triple P, helped me grasp the simple nuts and bolts of encouraging positive self-esteem and the crucial role parents play in building a child's self image from the ground up.

The biggest thing I learned was that encouraging healthy self-esteem does not lead to overconfidence but is actually our passport to happiness.

Research tells us that a consistently positive and healthy relationship with parents influences children's self-esteem above any other factors. That may seem like a tall order, but don't be discouraged! Here are a few manageable steps to support a positive self-image in little ones.

- **Practice good role-modeling.** Simply put, children mirror parents. Anything we say about ourselves easily becomes part of our children's internal dialogue about themselves. If I stand in front of the mirror and complain about what I see, before long I will notice my daughter doing the same thing. Parents are the gatekeepers of negative self-talk. Treating ourselves with kindness and respect encourages our children to treat themselves in the same way. When you're tempted to say something self-deprecating, either refrain from saying it altogether or reframe it: Instead of saying "Ugh, nothing ever goes my way," say "Today feels like a tough day for me."
- **Encourage an active life style.** Mother Nature is a great promoter of self-esteem, as outdoor activity naturally helps children develop confidence in their bodies. Now that springtime is here, think about ways you can spend time outside: planting flowers or starts for a veggie garden, hiking in Hyde Park, building a tree fort in your backyard, playing among the beautiful trees at Alto Park or taking a nature walk along one of Santa Fe's many arroyos. Regular exercise promotes a positive body image and is one of the building blocks for healthy self-esteem.
- **Tell your children that you love and care about them.** Little ones need to hear that they matter and that we love them ... all the time.

Ely Aguilar, grade 4, demonstrates how to tap your way to self-esteem, in the halls of NDI Dance Barns.

They need reassurance that they are still valued and accepted even when they make mistakes or do not excel. Saying, "I love you" every day and offering lots of affection adds to their sense of self-worth and confidence.

- **Simple listening is a great way to demonstrate to kids that you value their experiences.** Think of yourself as a sounding board. You don't always have to offer advice or solutions. For instance, if you ask about their day, you might listen and summarize: "Sounds like you had a good day, aside from Susie taking the ball from you at recess." Briefly paraphrasing their dialogue is a way to show that you were listening and that you care.
- **Help children make friends.** Strong friendships play a vital role in creating our identity and feelings of acceptance. If your child is shy or struggles to connect with others, listen closely for the name of a classmate they talk about or play with at school and invite that child over for a play date. Early friendships can become lifelong models for maintaining a strong network of friends. Friendships convey an implicit message that we are not only loved by parents and family who are "supposed" to love us but that we are worthy of love from others. Help your kids identify what friendship means: "That was nice of you to include Louis in your game. You were being a good friend to him." Or if a child says, "I'm not going to play with you, you're not my friend!" you might respond by saying, "If you are feeling frustrated with Sara, let's try and work it out. It doesn't mean you can't be friends anymore." This helps them understand the value of friendship and how to be a good friend. Help kids make deeper connections with friends by encouraging kindness, generosity, sharing, cooperation and inclusion.
- **Help children set and keep goals.** Parental support has a huge influence on children's sense of self-worth. Start with small goals and gradu-

ally make bigger ones over time. For instance, if a child insists on a new special toy, instead of simply saying, "We cannot afford it," or, "You already have a toy like that," help strategize a way to achieve that goal. Perhaps there is a way for the child to earn the toy by doing small jobs or doing well on a test. Set a goal appropriate to the child's age. Saying, "You can have the toy at the end of the year," or, "Do well in school all year and you can have it," is too distant and vague for a child to imagine accomplishing. Keeping time frames short and expectations reasonable encourages setting larger goals in the future.

- **Encourage children's independent thinking and decision-making.** Choices are empowering. Increasing a child's opportunities to make

children get older, allow them to make more significant choices. Little decisions in the early years establish a foundation of competence in the later years.

- **Praise children's efforts above accomplishments.** There has been a lot of discussion about praise in the media lately, particularly about "overpraising" children. By praise I do not mean the generic "Good boy/girl," or "Good job" variety. Meaningful praise is specific and descriptive; in fact, such praise is more like narrating what you see, rather than judging a behavior, outcome or the whole child as good or bad: "You worked hard on building that tower really high, then it fell down; would you like to try again?" "Wow, I see you've been working hard on your school project. Nice job sticking with it!"

- **Be realistic and honest with praise.**

Look for opportunities to genuinely praise or acknowledge a child's effort. Remember, the goal is to encourage children to develop creative problem-solving skills and tenacity, not to make them feel that they are good at everything. Having appropriate expectations makes all of this easier. Take into account your child's age, temperament and pace. Our love and patience is a template for children to grow these qualities within themselves.

Parents are not perfect, nor do we need to be, in order to be positive guides. Good parenting requires consistent supportive interactions with our children.

The seeds of self-esteem planted in our little ones today will help them become confident, competent, happy adults.

The key elements are connection, kindness, respect and love.

.....  
*Shabd Simran Adeniji is the new co-owner of The Birthing Tree Cooperative. For a schedule of classes, see the Tumbleweeds calendar or go to [www.thebirthingtree.com](http://www.thebirthingtree.com). For support in parenting or concerns about your child's self-esteem, contact her at (505) 552-2454 or [www.mynurturingsolutions.com](http://www.mynurturingsolutions.com).*

## TO LEARN MORE

- **The How of Happiness: A Practical Approach to Getting the Life You Want**, by Sonja Lyubomirsky (Piatkus 2010). Advice for increasing happiness in day-to-day life.
- **"Does low self-esteem predict depression and anxiety? A meta-analysis of longitudinal studies,"** by Julia F. Sowislo (US National Library of Medicine: National Institutes of Health, 2012). [www.ncbi.nlm.nih.gov/pubmed/22730921](http://www.ncbi.nlm.nih.gov/pubmed/22730921).
- **Santa Fe County's United Way Positive Parenting Program (Triple P):** Classes give parents practical tips to help manage the big and small problems of family life. [www.uwsfc.org/our-programs/parenting-classes-workshops/](http://www.uwsfc.org/our-programs/parenting-classes-workshops/).

decisions as they grow develops their autonomy and long-term ability to make healthy decisions. Start small. Give very young children choices in what to eat for breakfast or what to wear. Offer two choices, rather than an unlimited number: "Which pants do you want to wear, the blue ones or the brown ones?" or, "Would you like to sit next to me or your brother at dinner?" As



## Most of our Kindergarten kids will earn a university degree!

According to the most recent 4-year national Cognitive Genesis study by educational researchers, 80% of all **Adventist Academy** students will go on to earn a university degree!

Maybe that's why parents choose to send their children to one of our five schools in New Mexico. Or it may be because **Adventist Academy's** national curriculum exceeds requirements of all 50 states, including the Land of Enchantment. Or maybe it's because our students score higher than the national average. They're well equipped to succeed in a very competitive world.

The **Adventist Academy of Santa Fe** is now accepting applications for the 2015-16 school year, grades K-8. We have open enrollment, but student placements are limited.

Ask about our scholarship program.

[adventistacademyfe@gmail.com](mailto:adventistacademyfe@gmail.com) | 505-467-8603 | [www.adventistacademyofsantafe.com](http://www.adventistacademyofsantafe.com)

702 Bishops Lodge Rd, Santa Fe, NM 87501

# ALBUQUERQUE *Avian* ADVENTURE

Enjoying the cranes, ducks and geese who love New Mexico as much as we do

By Gloria Fournier Valdez

## When we spend time with our 8-year-old

granddaughter Anneliese and her baby brother Andrew, we can bet there will be an adventure ahead. Anneliese knows Papa and I love to explore gorgeous New Mexico! One of our favorites, in any season, is the Rio Grande Nature Center State Park, only about an hour from Santa Fe, in Albuquerque.

Late winter and spring are wonderful times for visiting the Rio Grande Nature Center. Thousands of Canada geese, cranes and ducks come down from the cold north every year to enjoy our milder temperatures and bask in our sunshine. Around April you will start to see groups of them flying back. Of course summer and fall are nice, too, because hundreds stay and do not return home. Can we blame them? It's a pretty drive to the nature center through Albuquerque's North Valley, where homeowners plant food just for the wild cranes and geese to feast on. There are birds all over the lawns on Rio Grande Boulevard, and the backdrop of Albuquerque's Sandia Mountains is spectacular!

Since any successful day trip with young children requires keeping their tummies satisfied, we stopped for lunch at a little pizza restaurant just about a mile from the nature center. Village Pizza is set in an old, quaint,

cozy New Mexico house. Papa and Anneliese enjoyed the all-you-can-eat pizza buffet and salad bar, and I had perhaps the best green chili stew I have ever had! (Andrew savored his favorite baby food of chicken and apples, brought from home.)

When we arrived at the park, our first stop, as always, was the visitor center, where we headed straight to the observation room. This is a large, sunny room with floor-to-ceiling windows overlooking a three-acre pond. The visitor center also has a Discovery Room with excellent hands-on exhibits for children, but on this day Anneliese grabbed Papa's hand and they went right outside to walk one of the many trails. Andrew and I stayed indoors, watching the ducks and other waterfowl float by and listening to their gentle calls through the microphone piping in outdoor sounds.



Anneliese and Papa feed duck, geese and other water fowl at Albuquerque's Tingley Beach, open every day of the year from sunup to sundown.

Courtesy photos

I noticed that most of the birds were swimming in pairs. Some were in groups of four, as if they were on a double date. From one of the books in the center's reference library, I learned that Canada geese mate for life. Who knows? Maybe they offer marriage counseling. I was hoping to see a snapping turtle sunning himself, but no luck. I did see a mischievous squirrel stealing food from a bird feeder. It was so relaxing, just sitting and watching the comings and goings of the ducks, as the cranes and the geese flew overhead in formation, that I didn't notice until I looked down at the stroller that Andrew had fallen sound asleep.

Anneliese and Papa returned from their nature walk excited and invigorated. They did not see any creatures, though they did meet a volunteer on the trail who told them that the best time for sightings is early morning and dusk. She also informed Anneliese about the monthly Twilight Hikes on Moonlit Nights, which Anneliese told me she really, REALLY wanted to do. The park offers so much to see in any season, and so many activities, that our experience of it will grow as the children do.

Our next stop was Tingley Beach, a free recreation area on the Rio Grande, only about four miles south, where hundreds of ducks and geese congregate. There are three ponds: one for fishing, one for paddleboats and one where the ducks and geese interact with humans who love to feed them. The kind lady at the pizza restaurant had given us a takeout box of old bread to feed the feathered beggars. Unlike the nature center where it was peaceful and quiet, the pond was noisy with the loud honks from the geese and squeals from the children — music to a grandma's ears! To get there from the Rio Grande Nature Center, turn right on Rio Grande Boulevard NW, right on Central Avenue NW, then left on Tingley Drive SW. Or you can follow the geese.

It will not be long now before the geese leave the Land of Enchantment and fly north to their summer homes, but it was so nice to have them visit us. Anneliese and I imagined them going back and telling all their friends and relatives about the great place to spend the winters, and how friendly the people are in New Mexico. As for us, we spent a beautiful day outside enjoying nature and precious time together. Nothing fancy or expensive, quite simple actually, but wonderful!

.....  
*Gloria Fournier Valdez lives in Albuquerque with her husband, Richard.*

## GETTING there

- **Rio Grande Nature Center State Park** is located at 2901 Candelaria Road NW, Albuquerque, (505) 344-7240. Admission is \$3 per vehicle. Outdoor areas of the park are open from 8 a.m. to 5 p.m. every day of the year except Thanksgiving, Christmas and New Year's Day, and the visitor's center is open from 10 a.m. to 5 p.m. Leashed dogs (other than guide dogs) are permitted only in certain areas of the park. Check out the Friends of the Rio Grande Nature Center website, [www.rgnc.org](http://www.rgnc.org), for special activities.
- **Tingley Beach**, part of the ABQ Biopark, is located at 1800 Tingley Drive SW, Albuquerque, (505) 768-2000. This park is open daily from sunrise to sunset for boating, fishing, hiking, birding, biking and picnicking. Admission is free; no tickets are required. Access to fishing ponds is free, but anglers 12 and older need a New Mexico fishing license. The onsite snackbar, Tingley Café, offers burgers, sandwiches, cold drinks and ice cream.
- **Village Pizza Rio Grande**, 3851 Rio Grande Boulevard, Albuquerque, (505) 345-9542, is 1.3 miles from the Rio Grande Nature Center.

### Make Summer Count!



**SFSAS**  
**Arts & Science**  
**Summer Camps!**

June 8 to  
 August 7, 2015  
 Ages 3-14

**Scholarships**  
**Available!**

[www.santafeschool.org](http://www.santafeschool.org)

505.438.8585

### The double take experience

Santa Fe's Nationally  
 Known Largest  
 Retail/Resale Store



**Furniture & Bedding**  
**Baby Gear & Accessories**  
**Pretend Play & Riding Toys**

**Art Supplies**  
**Books, Puzzles & Wooden Toys**  
**Maternity & Nursing**

At the corner of Guadalupe & Aztec • Santa Fe  
 505.989.8886

**Buy • Trade • Consign**

# Spring Activities

## TRANSFORM THE DOLDRUMS: BE A TREE!

By Myra Krien

This time of year, we all start to get a little antsy. The end of the school year is in sight but not here yet. Spring weather can be iffy in Santa Fe — warm one day, then just a little too cold and windy outside the next — and restlessness starts to set in. This is a simple exercise that can be done wherever you are to clear the mind, invigorate the body and re-energize the attitude. Let's be a tree!

First, close your eyes and imagine yourself standing outside on a beautiful, sunny, warm day. Where are you standing? Are you in a forest, on a mountain, by the ocean or in your backyard? Imagine yourself in this place as the tree. What kind of tree are you — aspen, oak, willow or pine? Imagine your roots reaching deep into the rich, brown earth, filling themselves with nutrients and drinking from cool, pure spring water.

Now imagine your body, the base of the tree, your trunk, your bark. Feel how strong you are, how centered. As you reach your arms out and s-t-r-e-t-c-h, imagine your limbs as the branches of this tree. Sway your body through space, imagining what it feels like to be moved by the wind around you. Imagine the warmth of the sun seeping into your every pore, filling you with light.

As you keep moving and swaying with your feet firmly planted, imagine all the leaves rustling on your branches. As the wind blows gently and the sun lights up these leaves, they are shimmering and shimmying in the wind. Shimmy your body, breathing deeply, stretching, reaching, feeling your whole body as the tree. Feel your feet connecting to the center of the Earth. Feel your arms stretched out to the sky. Feel your whole body getting taller.

Now shake the tree as hard and as fast as you can! Breathe!

Open your eyes and reflect on your experience. If you are in a classroom and other people are around, turn to the person next to you. Ask yourself or each other, "What kind of tree were you?", "Where was your tree standing?", "How do you feel now?", "Was anything distracting you during your exercise?" (You might want to address these distractions before returning to your task.)

After sharing your imaginary experience, you are ready to go back to your day. Do you feel different from before?

Myra Krien is director of Pomegranate Studios.



Pomegranate Studios assistant Mollie Kelly as a pine tree on the Santa Fe River.

Courtesy photo

## ACTING OUT: THEATER GAMES BURN STRESS AND BUILD SKILLS

By Rebecca Morgan

Facing a large group of people with self-confidence, poise, vocal range and emotional control may be daunting to many children and teens (and adults too!). Theater training is one entertaining and very effective way to bring these skills in reach. Teatro Paraguas Children's Theatre (formerly Southwest Children's Theatre)

works with a suite of games and exercises that nurture these abilities. These are some of the activities that kids in the theater's after-school program love the most.

### Warm Up your Mind and Body

To get everyone warmed up and over any shyness, start out by asking students to walk around the room as the "characters" you call out: robot, older person, ballet dancer, 2-year-old, king, queen, chef, soldier, ninja, superhero, tightrope walker, clown, football player, tennis player, scarecrow, etc.

Alternatives: Walk around as an animal, mineral or vegetable: kite, bubble, cloud, popcorn, mud, rain, monkey, giraffe, bee, snake, balloon, dragon, feather, etc.

### Concentration and Observation: Guess Who's Leading/Changing the Motion

Send one to three people out of the room. Everyone else forms a circle. Pick someone to "lead" an action: swinging the arms around in a circle, stomping the feet, swaying side to side or whatever the leader's imagination comes up with. Everyone else in the circle must perfectly "imitate" or "mirror" the leader's actions as quickly as they can without giving away who the leader is. (Hint: Use peripheral vision!) Every 15 to 20 seconds, the leader must "change" the motion in some slight way, while the circle quickly adapts to the change. The person or people sent out of the room return and try to "Guess who's leading the motion!"

### Create a Short Scene, Create a Character, Speak Clearly: Three Word Skits

Divide the class into groups of three or four. Count off to choose groups after dividing the number of kids in class by the size of groups desired; for example, if you have 21 kids in class and you want three kids in each group, count off by sevens, then the ones all work together, the twos, the threes, etc.

Give each group a slip of paper with three words on it: a place, an animal or a color, and an inanimate object. For example: the woods, a bear, a Pepsi can; a cave, yellow, a broom; a pirate ship, green, scissors; a fast food restaurant, an elephant, a remote control, and so on.

Ask each group to create a short skit based on these three words. Allow them to rehearse for 10 to 15 minutes. Check on them periodically and offer help if they need ideas.

Remind each group that the skit should have a beginning, a middle and an ending. They should speak clearly, face their audience and be as real as possible. Have the audience guess the "three words" when each skit is completed. Take a bow!

As you can see, these games can easily be incorporated into daily programming, allowing kids to have fun while building critical skills. And each student gets to feel like the star of the show while playing these "games." What could be better for taking a break from testing or being stuck inside during a stormy recess?

Rebecca Morgan is the director of Teatro Paraguas Children's Theatre. For more information on their after-school and summer theater-arts classes, call (505) 471-3140 or visit the Teatro Paraguas site at [www.teatroparaguas.org](http://www.teatroparaguas.org) and click on the "children's theatre" link.

## THE PICTURE FRAME GAME

By Molly Brooks Sylla

This is an activity I learned from the book *Sharing Nature with Children*, by Joseph Cornell. Take turns with your child or let them take turns with one another at being the leader for this activity. Children love the chance to open an adult's or friend's eyes to something beautiful.

The leader takes the hand of their partner (whose eyes are closed) and leads them to a special spot where there is an object of beauty: a blooming flower, a brightly colored leaf, a bird's nest, animal tracks, a bark of a tree, etc. The leader frames the object with their hands right in front of their partner's eyes, then tells their partner to open their eyes. When they do, they have the incredible artwork of nature to see.

Take time to discuss the elements of a creative, beautiful picture with children. Otherwise the partner may end up "admiring" a stray sandwich bag or soda can!



Also, encourage participants to be as quiet as possible. Explain that silence helps the beautiful pictures the leader has “made” have a greater impact on the partner.

Show children how to guide their “blind” partners carefully and protectively; it works best to gently pull the partner’s hand in the desired direction.

The Picture Frame game relies on visual experience instead of verbal explanation. This allows even very young children to participate as fully as adults. Children delight in sharing their pictures with adults or peers, and suddenly something that may have gone unnoticed is now seen and appreciated by both.

*Molly Brooks Sylla is the science and garden coordinator for Acequia Madre Elementary School. She offers spring and summer camps at the school garden. See her listings in the Tumbleweeds’ Directory of Spring and Summer Camps and Programs on page 28 or email brooksmolly1@gmail.com.*

## MAKE a DECORATED ALPHABET

By Sherry Bishop

The foundation of our educational system in this country was built on three pillars: reading, writing and arithmetic. What has happened to writing? Handwriting is an essential part of children’s development, yet it is now no longer a required part of elementary school curricula in over 40 states.

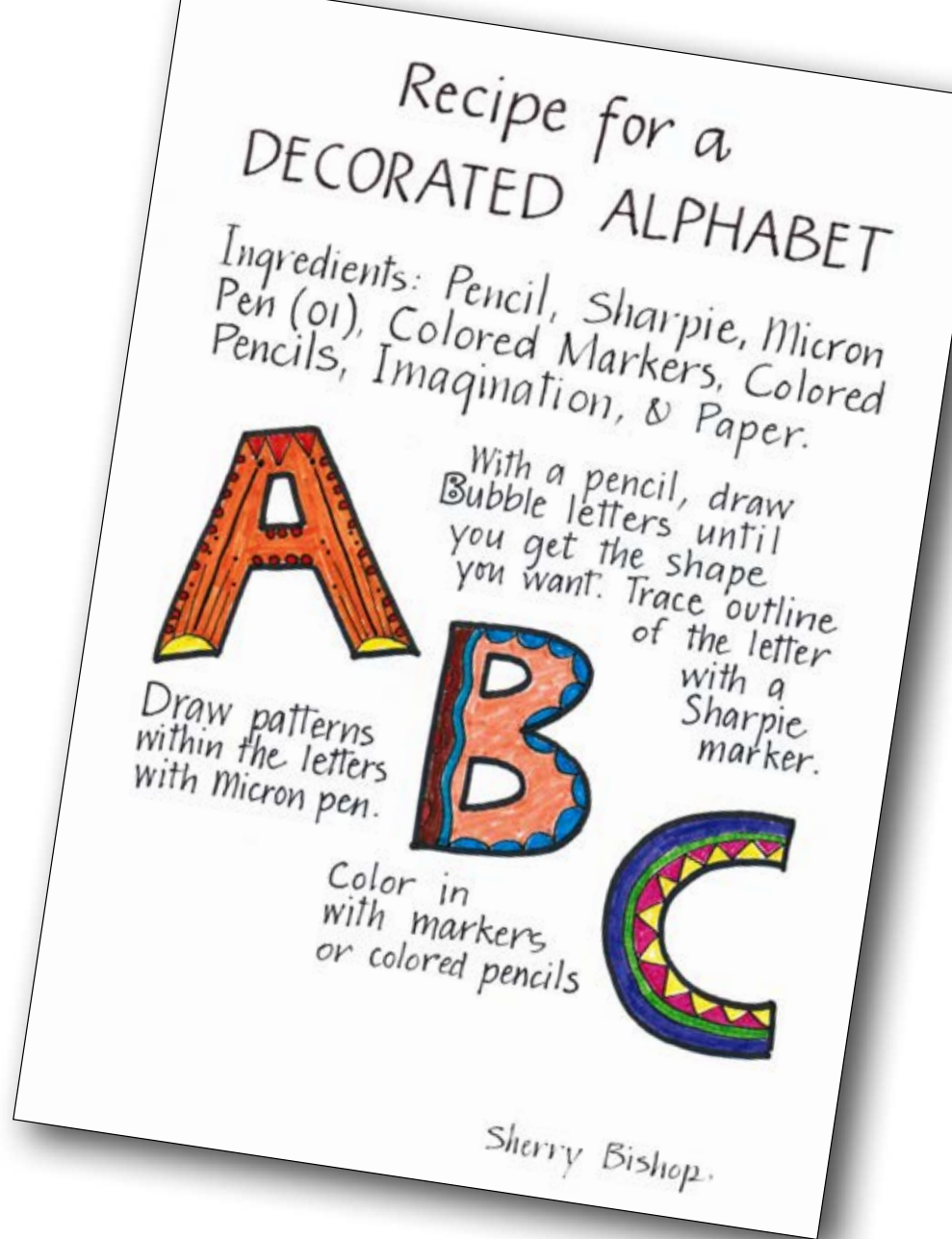
We have all gotten so far from using pens and pencils. Using a keyboard is quick, efficient and timely, but handwriting is expressive, creative and personal. The computer usurps our power and privilege to express ourselves through our unique handwriting, doodling and illustrating, as the author of our lives. Children gain confidence from knowing that they can present themselves well through the effort of their own hand.

Many of the students I work with say they don’t like writing by hand. All too often, their deeper admission is that they don’t like how their handwriting looks, because they never learned the magical formation of letters in the first place. I tell them handwriting is like skiing. At first, we learn at an extremely slow pace, until we are familiar with each curving movement, straight line and follow-through. Then, just as an advanced skier zips down the slope with his or her own style, so does a child develop their own expressive way of writing when the skills become automatic.

Teaching handwriting today is like getting children to eat vegetables. I try to incorporate art, just as a little spice that makes the vegetables tastier!

In our world today, where so much draws our attention to the external things happening around us, we sometimes can’t find the door that leads to a quiet, internal place. When we sit down to write with a pen in hand, a door opens into that quiet place. By the end of a class session, my students have evened out, centered and become balanced.

A simple activity that helps children open that door is the Decorated Alphabet. Children make a silhouette of a letter, which they then embellish in their own creative, expressive way — for example, drawing a bird’s nest in the center



of a “P” or rays of the sun coming out of the dot of an “i.” In the process, they develop a relationship with the alphabet. This is a simple activity to do with children at home or in the classroom, another choice to add to your options, along with activities on the computer!

*Sherry Bishop, a professional calligrapher, teaches art, calligraphy and bookmaking at La Mariposa Montessori School, the Santa Fe Waldorf School and in her studio. She can be reached at SherryBishopSantaFeStudio@gmail.com.*

## ¿DÓNDE ESTÁN NUESTRAS GUARDERÍAS?

La eterna escasez de servicios de cuidado infantil

Por Claudette E. Sutton • Traducción por Flor de María Oliva



Dean Pester, con su cuidadora Carmela Martínez, en "Kids Campus", la guardería en Santa Fe Community College.

Foto por Nina Bunker Ruiz

**Cuando uno espera un bebé hay dos cosas** de las que se puede estar absolutamente seguro.

Primero, el bebé será el más adorable en la historia de la humanidad.

Segundo, si piensa regresar al trabajo en uno o dos años, sus opciones de guardería serán pocas, caras y difíciles de encontrar.

“He tenido más padres en mi oficina llorando por este problema de lo que puedo contar”, dijo Leigh Fernández, quien por varios años dirigió el Programa de capacitación y asistencia técnica de la niñez temprana en el Santa Fe Community College (SFCC), con un componente de recomendación de guarderías, y quien ahora es consultora de la niñez temprana para el Programa de capacitación y asistencia técnica de la niñez temprana de la Universidad de Nuevo México del Norte y miembro del cuerpo docente del SFCC.

“Si tiene tres años, el mundo es suyo”, dijo Fernández, al hacer notar que Santa Fe tiene numerosas instituciones preescolares de una variedad de orientaciones. “Para los de dos años de edad, las opciones son escasas; y para los de 12 meses y menores, increíblemente escasas.”

En los últimos años, varios de los programas infantiles — como el de la Iglesia Episcopal de Santa Fe, el de la Iglesia Metodista Unida de San Juan y SER Jobs for Progress — han cerrado sin que otros surjan para reemplazarlos. Algunas escuelas, como Garcia Street Club y Children’s Garden Montessori, han abierto clases para niños pequeños para ayudar a llenar esa necesidad, pero los padres que trabajan y que necesitan guardería para sus pequeños se enfrentan constantemente a los desafíos de acceso y costo.

¿Por qué es el problema tan persistente? Hace casi 20 años, Tumbleweeds trató de esto en el artículo “Where, Oh Where, Is Our Childcare?” [¿Dónde, ay dónde, están nuestras guarderías?]. Durante todos esos años, conforme el número de padres de familia que trabaja fuera de casa ha ido aumentando, ¿por qué no ha surgido una industria competitiva para satisfacer sus necesidades de cuidado infantil?

“Proveer guardería de calidad es increíblemente caro”, dijo Fernández.

Mientras que todos los negocios en Santa Fe se enfrentan al alto costo de los

alquileres, el mayor gasto para los centros de atención infantil es el de personal, inevitablemente. Los reglamentos de Nuevo México permiten que haya seis niños por adulto que trabaje en una guardería con licencia, pero en los programas mejor calificados la proporción es de tres o cuatro niños por adulto. Los proveedores de atención en el hogar que tienen licencia estatal pueden tener hasta seis niños en un momento dado, pero no más de dos menores de dos años. Es difícil para los proveedores del servicio cobrar lo suficiente como para hacer de la atención infantil un negocio viable para ellos financieramente y sin salirse del alcance del presupuesto de los padres que requieren el servicio para poder regresar a trabajar.

“Realmente, no hay una solución simple”, dijo Fernández, y agregó que el problema no es sólo en Santa Fe. “Siempre se supone que los padres deberían quedarse en casa cuando sus hijos son pequeños. Sí, eso es bueno, pero no es una opción para todos. Y hay quienes no quieren quedarse en casa, lo que también está bien.”

Entonces, ¿qué hacen los padres con niños pequeñitos?

Para las familias de escasos recursos, *Head Start* y *Early Head Start* proveen cuidado infantil y servicios sociales para niños desde recién nacidos hasta los cinco años de edad — siempre y cuando las familias llenen las pautas de ingresos y haya cupo.

Otros deben competir por el espacio en unos cuantos centros que aceptan a niños pequeños o encontrar un programa adecuado de guardería en la casa del proveedor del servicio.

Y otros tienen que valerse de amigos o familiares. Tal vez la mamá cuida al bebé en sus días libres y el papá en los de él y la abuela o un vecino se encargan otro día o dos. A veces uno de los padres trabaja de noche y el otro de día. “Yo no sé si esto es mejor para el niño, puesto que oímos decir que la consistencia es importante para los niños chiquitos, pero no siempre es posible”, reflexionó Fernández.

Algunos padres de familia descubren dolorosamente que la guardería cuesta más de lo que ganan en su empleo. “Como que se cruza esa línea, porque uno

no puede costear el quedarse en casa, pero tampoco puede costear el pago de la guardería”, dijo Fernández.

A quienquiera que usted encuentre para que cuide a su bebé, debe evaluarle cuidadosamente, insistió Fernández. Aquí hay algunas sugerencias para asegurar que su hijo recibe la mejor atención posible:

- **Siga sus instintos.** “Suenan un poquito trivial, pero yo todavía animo a los padres a que sigan sus instintos”, dijo Fernández. “No puedo decir sólo: ‘Ponga atención a esto, esto y esto’, porque los niños son individuos únicos y usted tiene que encontrar lo que funciona para su hijo. Y *sabrás* [que lo ha encontrado] cuando lo vea”.
- **Empiece temprano.** Si sabe que regresará al trabajo poco después de que nazca su bebé, empiece a buscar guardería tan pronto como sea posible en su embarazo. Familiarícese con las opciones. Agregue su nombre a un par de listas de espera, aunque cobren una cuota, sugirió Fernández. “No escoja sólo una opción y espere”.
- **Observe diferentes programas.** Como padre, ¿cómo se siente cuando entra al lugar? ¿Querría usted estar allí si fuera niño? Si el director del programa se resiste a que usted observe, tómelo como una advertencia.
- **Haga una entrevista formal.** Haga preguntas a los proveedores sobre su experiencia y educación. Pídales que describan un día en su programa. ¿Tienen seguro de responsabilidad? ¿Tienen un horario para meriendas, recreos y descansos o siestas? Podría ser un horario muy simple, pero debería de haber un plan. ¿Con qué frecuencia usan la televisión si es que la usan?
- **Observe a los niños.** “Están ocupados, felices, riéndose, activos?”, preguntó Fernández. “Talvez el salón está un poquito desordenado y los juguetes son hechos en casa, pero si los niños se están divirtiendo, esa es una buena señal. Si todos los bebés están en sus cunas al mismo tiempo y no están durmiendo, yo querría saber la razón. Los quiero ver jugando en el suelo, abrazados, interactuando mucho con alguien. *Mucho*.”
- **Observe a los adultos.** “Por mi dinero, lo más importante es cómo los adultos interactúan con los niños”, dijo Fernández. “¿Cuál es su tono de voz? ¿Es bondadoso, acogedor y amoroso? ¿Si es duro mientras usted los observa, nueve de diez veces es peor que cuando usted no está allí! Por otra parte, si usted entra y se convierte en la persona más importante en el salón, esa es una advertencia también.”
- **Pida referencias.** “Yo siempre recomiendo pedir referencias. Incluso con una guardería no regulada [en casa del proveedor, sin licencia ni registrada], yo animaría a las familias a pedir referencias.”
- **Comuníquese.** Ya sea que ponga a su niño en una guardería, que lo cuiden en una guardería en casa del proveedor o que lo cuide un familiar suyo, mantenga siempre un diálogo. Informe al encargado de los cambios en la vida de su niño. Pídales que le mantengan al tanto de lo que su niño hace. Pídales que tomen vídeos cortos o fotografías cuando su niño esté en el teléfono para que usted pueda hacerse una idea de cómo les va cuando usted no está presente. “A veces los padres me dicen: ‘No quiero molestarlos’, indicó Fernández. “Yo les digo, ‘Moléstelos. Usted no está dejando su carro para que lo reparen. Es su hijo’.”

Lo bueno es que mientras que el número de programas para niños pequeños y bebés puede seguir estando por debajo de las necesidades, el nivel de atención en los programas que *tenemos* es bueno, dijo Fernández. “En general, la calidad del cuidado que los bebés están recibiendo en Santa Fe es buena, por lo menos de los proveedores con licencia o registrados y los que ofrecen los servicios en sus casas. Los padres se están educando más sobre lo que quieren y nuestros estándares han subido mucho más. Está creciendo el conocimiento sobre el grupo de recién

## Servicios

- **El Programa de ayuda para asistencia infantil de Nuevo México** subsidia el costo de la atención infantil para familias de bajos recursos. Puede obtener una solicitud en inglés o español en: [cyfd.org/child-care-services/child-care-assistance](http://cyfd.org/child-care-services/child-care-assistance), sitio que también provee una lista de oficinas regionales. O puede comunicarse con Jolyne Vigil en el (505) 827-7499, 1-800-832-1321 o [jolyne.vigil@state.nm.us](mailto:jolyne.vigil@state.nm.us).
- **Head Start de Nuevo México** provee servicios preescolares y sociales a niños de escasos recursos, de 3 a 5 años de edad. *Early Head Start* sirve a bebés y niños pequeños de familias de escasos recursos. Fernández anima a los padres a solicitar ingreso al programa aunque piensen que no llenan los requisitos.
- **New Mexico Kids Child Care Resource and Referral (servicios y recomendaciones)** este programa de la Universidad de Nuevo México, División de educación continua, es un excelente recurso para los padres de familia, proveedores de atención infantil y educadores. Su sitio en la web incluye una base de datos de todo el estado sobre proveedores de atención infantil, sugerencias para escoger un programa, capacitación y otros servicios para proveedores y educadores, pautas en aprendizaje sobre la niñez temprana y mucho más. El sitio es: [www.newmexicokids.org](http://www.newmexicokids.org), o escriba electrónicamente a: [support@newmexicokids.org](mailto:support@newmexicokids.org).
- **El Programa de asistencia técnica y capacitación de la UNM del Norte (TTAP, por sus siglas en inglés)** provee una variedad de servicios a proveedores y familias de niños pequeños y bebés en 13 condados: Santa Fe, Río Arriba, Los Alamos, San Miguel, San Juan, McKinley, Cibola, Colfax, Harding, Taos, Torrance, Union y Mora. Llame a Leigh Fernández al (505) 428-1344.

nacidos hasta los de tres años de edad y la ciencia está allí — es lo que está de moda — así es que talvez eventualmente obtendremos lo que necesitamos”.

Poner a nuestro bebé al cuidado de alguien más nunca es fácil en la mejor de las circunstancias, dijo Fernández. “Uno podría tenerlo todo en una persona — podría tener a Mary Poppins — y como padre nuevo todavía pensaría: ‘¡Dios mío, este es mi bebé! Uno todavía tiene esa angustia’.”

Angustia. Esa es otra cosa de la que todo nuevo padre puede estar seguro.



Want to find a last minute event for you and the kids?

Or re-read an article you loved a couple of issues ago?

Check out the **Tumbleweeds** website. New info is added all the time!

**MUSICAL THEATRE WORKS** Santa Fe

PRESENTS

**C-A-M-P SANTA FE**

July 6-17, 2015

Monday-Friday, 10 a.m.-4 p.m.  
Final Showcase Performance: July 18.  
\$595 (partial scholarships available)

Workshops in:  
Music  
Acting  
Performance  
Musical Theatre  
Dance  
Storytelling

For more information:  
Call 505-946-2468,  
email [info@c-a-m-p.net](mailto:info@c-a-m-p.net),  
or register online at  
[www.MusicalTheatreWorks.net](http://www.MusicalTheatreWorks.net).

# Spring Break & Summer Camp Directory

## SPRING BREAK CAMPS & PROGRAMS

### ACEQUIA MADRE SPRING BREAK GARDEN CAMP

Spring planting, greenhouse tasks, garden crafts, community service, walking field trips, egg-dyeing and lots of outdoor play. Ages 9 to 12. Small group family-like setting in the beautiful school garden. March 30 to April 3, 8 a.m. to 3 p.m. \$175 for the week or \$40 per day. Email [brooksmolly1@gmail.com](mailto:brooksmolly1@gmail.com) for more information.

### ARTSMART'S ANIMALS ALIVE!

Weeklong Spring Break Camp in the ARTbarn Community Studio. Explore the world of furry, scaly, leathery, feathery friends. This is a great opportunity to let campers' imaginations soar using many different mediums to create innovative and fun animal art. March 30 to April 3, 8 a.m. to noon, grades K through 3. Fee of \$200 includes all materials and snacks. Scholarships available. Register online at [artsmartnm.org](http://artsmartnm.org) or in person at the ARTbarn, 1516 Pacheco Street. For more information, contact Amanda Neiter, (505) 992-2787 or [aneiter@artsmartnm.org](mailto:aneiter@artsmartnm.org).

### CHILDREN'S ART SPACE SPRING BREAK CAMPS

Discover a new arts program for children and families emphasizing drawing, painting and printmaking with some 3D projects as well. Spring Art Camp is offered March 27 (parent/teacher conference) and spring break (March 30 to April 3), 8 a.m. to noon and 1 to 5:30 p.m. Enroll for any or all days. Half-day sessions: \$30. Full days: \$50. Scholarships available. Classes take place at 1219 Luisa Street #6, Santa Fe. To register, call 490-2119, email [childrensartspace@gmail.com](mailto:childrensartspace@gmail.com), visit [www.childrensartspace.com](http://www.childrensartspace.com) or find our Facebook page.

### CIRCUS ARTS AT WISE FOOL

Circus Camp for Spring Break, March 30 to April 3. Ages 6 to 12. Kids support one another in partner acrobatics, walk tall on stilts, climb to new heights on aerial silks and trapeze, juggle and clown around, create shadow puppets, and perform for their families on the last day. Wise Fool also offers Summer Camps, Afterschool Fools and Performance Troupe; go to [wisefoolnewmexico.org](http://wisefoolnewmexico.org) or call 992-2588 for details. (Psst, kids shouldn't have all the fun. We also offer a range of classes for parents and teens!)

### GENOVEVA CHAVEZ COMMUNITY CENTER SPRING CAMP "FES" TIVE

Fun, Educational and Safe programming for ages 6 to 12, March 30 to April 3. Full-day camp, \$135, Monday to Thursday, 7:30 a.m. to 5:30 p.m. and Friday 7:30 a.m. to 1:00 p.m. Swimming, ice-skating, sports, arts and crafts, games and Fun with Food. Half-day Basketball Camp, \$55, 8:30 a.m. to noon, includes skills, drills and scrimmage games. Combo Camp, \$155: participate in morning Basketball Camp, then join Day Camp for afternoon activities. Parents provide lunch and snack. Call Melissa, 955-4005, or Tiedra, 955-4014. [www.chavezcenter.com](http://www.chavezcenter.com).

### MOTHER'S FARM SPRING BREAK CAMP

Full-day camp, March 30 to April 3, with pre- and after-care for ages 5 to 12 and a Mentoring Program for ages 13 to 18, on a 10-acre farm off Highway 14 outside Santa Fe. Horseback riding, horsemanship games, Golden Retriever puppy training, nature painting, sculpting with hand-harvested farm clay, organic gardening, cooking, yoga, interactive group games, nonviolent communication, meditation, songwriting. Transportation from Trader Joe's and Factory Outlet Mall. \$199 includes snack, materials and taxes. Sibling discounts. Call about our full-summer program. Visuddhi Brenda Wittner, 930-1838, [www.mothersfarmschool.com](http://www.mothersfarmschool.com), [cowgirlbrenda108@yahoo.com](mailto:cowgirlbrenda108@yahoo.com).

### SANTA FE CLIMBING CENTER CLIMBING ADVENTURE CAMPS

Indoor and outdoor climbing, wilderness survival skills, hikes and other outdoor adventure-based activities. Weeklong camps from 8 a.m. to 4 p.m., \$349 per week. Spring Break Camp: March 23 to 27 and March 30 to April 3, for ages 5 through 12. See listing below for our summer schedule. Santa Fe Climbing Center, 825 Early Street. Call 986-8944 or visit [www.climbsantafe.com/camps/](http://www.climbsantafe.com/camps/).

## SUMMER OVERNIGHT CAMPS

### GHOST RANCH EDUCATION & RETREAT CENTER

Hiking, climbing wall, trail rides, archery, dinosaurs... find all this and more at Ghost Ranch Education & Retreat Center. Take an adventure drive 70 miles northwest of Santa Fe on Highway 84. Explore two museums, home to the New Mexico state fossil, *Coelophysis*, discovered at Ghost Ranch. Come for the day with our Adventure Day Pass. Spend the night camping or lodging. Join us for Family Week, a weeklong adventure camp with something for the whole family, June 29 to July 5. [www.ghostRanch.org](http://www.ghostRanch.org), (505) 685-1000.

### GLORIETA CAMPS

A new Christian Adventure Camp at Glorieta Pass. The conference center has impacted thousands of lives in over half a century and is building on that legacy. Lots of opportunities for adventure and fun, for everyone in the family! Visit us online, [www.glorieta.org](http://www.glorieta.org), or see our ad on page 2, to check out a few of the highlights this summer, like Family Camp, Wilderness Courses, Trail Crew and Group Camp. Opportunities everyone can afford. Scholarships available. Call Scott Chapman, Wilderness Discipleship Director, (505) 639-9717 or (505) 757-6161.

## SUMMER DAY CAMPS & PROGRAMS

### ACEQUIA MADRE SUMMER GARDEN CAMPS

June 1 to 5, 9 a.m. to 3 p.m., grades K through 6, performance for parents on the last day. July 6 to 10, 8 a.m. to 3 p.m., grades



A young Jedi stitches his robe at Big Sky Build It! summer art and science camp.

Courtesy photo

4 through 6 only, with daily drumming lessons and an overnight on Thursday in the garden. July 13 to 17, 8 a.m. to 3 p.m., grades K through 6, daily drumming and overnight on Thursday. August 10 to 14, 9 a.m.-3 p.m., grades K through 6. Camps are \$175 per week, or \$40 per day; \$220 for camps with overnight. Maximum 15 campers. Email [brooksmolly1@gmail.com](mailto:brooksmolly1@gmail.com) to register.

### ANOTHER BIRD OF SONG MUSIC DAY CAMPS

Another Bird of Song provides a fun and exploratory experience of music fundamentals, music history, singing, piano, drumming, instrumental families, ensemble playing and performance. Activities include music games, art and group games. For ages 5 to 7; no experience necessary. Sessions run Monday to Friday, 9 a.m. to 3 p.m.; \$250 per session: ONE SESSION ONLY, June 22 to June 26. Limit 10 students. To request registration materials, please email: [anotherbirdofsong@gmail.com](mailto:anotherbirdofsong@gmail.com).

### ARTSMART WEEKLONG SUMMER CAMPS

Innovative weeklong camps in ARTbarn Community Studio inspire and empower students to make unique and expressive art. The visual arts help youth learn about themselves and discover their worth and their talent. The \$200 fee includes all materials and snacks. Scholarships available. Camps are offered for grades K through 3, and grades 3 through 6. To register, visit our website at [artsmartnm.org](http://artsmartnm.org), or come to the ARTbarn, 1516 Pacheco Street. For more

information, contact Amanda Neiter: (505) 992-2787 or [aneiter@artsmartnm.org](mailto:aneiter@artsmartnm.org).

### ASPEN SANTA FE BALLET SUMMER SESSIONS

Learn in a supportive environment that fosters confidence, technique and artistry. Classes for children ages 3 and up, in creative dance, ballet, jazz, folklorico, hip-hop and more. Studio locations in Santa Fe and Eldorado. Summer session classes start June 6. For more information, call (505) 983-5591. Enroll online at [www.aspensantafeballet.com](http://www.aspensantafeballet.com).

### BELISAMA IRISH DANCE

Belisama Irish Dance offers classes for the whole family to enjoy. Performance opportunities in the community, local competition and fun choreography classes. Ages 5 and up. 901 W. San Mateo, Suite X, Santa Fe. Contact Adrienne Bellis, director, (505) 670-2152, or go to [www.belisamadance.com](http://www.belisamadance.com).

### BIG SKY BUILD IT!

Summer Art and Technology Camps in Santa Fe and Los Alamos. Make a real robot, spinning solar dragon mobile, flying surveillance drone, survival bow, magical mechanical magician's top hat and much more. Weeklong, full-day camps, with quality extended care. Age groups: 5 to 6, 7 to 8, 9 to 12, and 13 to 14. Paid teaching internships are available for adults and teens. Tuition \$250 per week plus materials. Scholarships and multi-camp discounts available. For more information, email

# Spring Break & Summer Camp Directory

infobigsky@gmail.com or call (505) 428-7575. Register at [www.bigskylearning.com](http://www.bigskylearning.com).

## CAMP CORAZONES

Since 1995, nonprofit Camp Corazones has served children ages 5 to 12 affected by HIV/AIDS. Alongside trained counselors, campers participate in swimming, arts and crafts, horseback riding, rock wall climbing, sign language, fly-fishing lessons and more. This year, the camp will be at the Santa Fe National Guard from July 15 to 19. Campers may apply from April 1 to July 1. Find us at [kids-camp.org](http://kids-camp.org) and like us on Facebook: [facebook.com/CampCorazones](http://facebook.com/CampCorazones). Contact Executive Director Jewel Cabeza de Vaca, (505) 690-4837 or [siete@sisna.com](mailto:siete@sisna.com) for more details.

## CAMP HORSEMEN SUMMER 2015

St. Michael's High School is pleased to offer Camp Horsemen Summer 2015 for elementary and middle school aged children. From soccer and art to football and science, kids will have a fun and memorable summer on our 25-acre campus as they develop and expand their skills and knowledge. Camp Horsemen not only provides a safe environment for kids but we also provide the most affordable summer camps in Santa Fe. Visit our website at [stmichaelsf.org](http://stmichaelsf.org) or call (505) 983-7353 for dates, times and cost.

## C-A-M-P IN SANTA FE

Creative Arts, Music and Performance! Enjoy all C-A-M-P has to offer during the day but sleep at home. C-A-M-P in Santa Fe runs July 6 to July 17, Monday to Friday, 10 a.m. to 4 p.m., \$595, with a final performance July

18. Inquire about our discount program for siblings or referrals. Limited number of partial scholarships available. Visit our website to learn about overnight C-A-M-P in the Berkshires: August 15 to 24. Register online at [www.c-a-m-p.net](http://www.c-a-m-p.net) or call (505) 946-0488.

## CANDYMAN SUMMER ROCK CAMP

Campers form a band with others at their playing level, learn new songs, improve their skills and develop their band's identity and logo, while working with top professional musicians in Santa Fe. Learn performance and recording techniques, experience the joys and complexities of being in a real rock band, record a CD at a professional recording studio, give a live interview on the radio (KBAC) and perform in a real rock concert. Camps are four hours a day for two weeks. See [www.candymanf.com](http://www.candymanf.com) for more information and registration.

## CHILDREN'S ART SPACE SUMMER CAMPS

Discover a new arts program for children and their families, emphasizing drawing, painting and printmaking with some 3D projects as well. This may be just the thing for your family: small groups, eight students, variety and continuity. Scholarships available. Classes located at 1219 Luisa Street #6 Santa Fe. To register call 490-2119, email [childrensartspace@gmail.com](mailto:childrensartspace@gmail.com), visit [www.childrensartspace.com](http://www.childrensartspace.com) or find our Facebook page.

## CHRIST CHURCH SANTA FE HALF-DAY CHRISTIAN SUMMER CAMP

June 8 to 12, 9 a.m. to noon for ages 3 to 12 years. Pack a lunch and plan to have fun

at our fifth annual Mission Camp Adventure. We've traveled the globe to solve mysteries -- and learned a lot about people in foreign lands and their cultures through games, food, crafts and Bible lessons. Camp is FREE but t-shirts cost \$10. Please RSVP by May 15 by emailing [kids@christchurchsantafe.org](mailto:kids@christchurchsantafe.org). Christ Church Santa Fe is located at 1213 Don Gaspar in Santa Fe.

## CREATIVEART INK SUMMER MULTI-ART PROGRAM

Join CreativeArt Ink for a weeklong arts experience with working artists, June 15 to 19 in Santa Fe on Old Pecos Trail. Create animations, sketches and sculptures with our artists-in-residence; compose photos with a pro; write a short story or poem with a published writer; improvise with a working actor. Half-day program \$295, or full-day in combination with Filmmakers Ink, \$495 (see listing below), making movies with award-winning filmmakers. Strengthen your foundation in the arts this summer! Email [Patrick@CreativeArtInk.com](mailto:Patrick@CreativeArtInk.com), call (413) 320-6071, or visit [www.CreativeArtInk.com](http://www.CreativeArtInk.com) or [www.Filmmakers-Ink.com](http://www.Filmmakers-Ink.com).

## DRAGONFLY ART STUDIO SUMMER CAMP

For ages 6 to 16. Fine art classes stimulate kids' imagination and creativity, while they have fun experimenting with a range of art mediums and materials. Summer Camp meets Monday to Friday, 8:45 a.m. to 4 p.m., June, July and August, with a different art theme each week. After-school art classes meet one day per week, 3:30 to 5:30 p.m. and end with a student art

show at a local gallery. We also offer art birthday parties and weekend workshops. Visit [dragonflyartstudioforkids.com](http://dragonflyartstudioforkids.com) or call Oceanna at 670-5019.

## FAST TRACK READING COURSE – SUMMER PROGRAM

See that your child is caught up before school begins. Course guarantees readers an increase of two grade levels in silent reading fluency by boosting comprehension, reading rate, spelling, vocabulary and testing skills. Test anxiety decreases and self-esteem skyrockets. Soon improvement follows in other subjects and homework takes less time. Monday through Friday, morning or afternoon sessions. Taught by Floy Gregg, veteran Developmental Reading Specialist. Call 570-1276 for your complimentary consultation and evaluation.

## FILMMAKERS INK SUMMER FILM CAMP

Make Movies! Filmmaking Camps June 15 to 19 in Santa Fe on Old Pecos Trail. Professional filmmakers work with students to create movies, script-to-screen. Afternoon Intensive for ages 11 to 15, includes filmmaking, acting and screenwriting. Morning Special FX program for 8- to 10-year-olds. Make it a Full Day in combination with CreativeArt Ink, an arts experience including animation, sculpture, photography, writing and acting (see listing above). All lessons presented by working artists. Email [Patrick@Filmmakers-Ink.com](mailto:Patrick@Filmmakers-Ink.com) or call (413) 320-6071. Visit [www.Filmmakers-Ink.com](http://www.Filmmakers-Ink.com) or [www.CreativeArtInk.com](http://www.CreativeArtInk.com).



Exceptional Students...Exceptional Education.

Offering summer skill-building programs in reading, writing, and math for students entering grades K-9.

Visit [maycenter.org](http://maycenter.org) for more information and to register.



[www.maycenter.org](http://www.maycenter.org)  
505.983.7407



RIO GRANDE SCHOOL

# SummerCamp

WEEKLY ENRICHMENT COURSES IN:

- CHINESE LANGUAGE AND CULTURE
- COMPUTER PROGRAMMING
- CREATIVE WRITING
- MUSIC
- GRAPHIC DESIGN
- SCULPTURE & MORE
- SWIMMING ONCE A WEEK
- EXPERIENTIAL EDUCATION EVERY AFTERNOON



CALL NEAL TURNQUIST AT 983-1621 OR  
EMAIL [SUMMER@RIOGRANDESCHOOL.ORG](mailto:SUMMER@RIOGRANDESCHOOL.ORG)

FOR MORE INFORMATION AND TO SECURE A SPOT FOR YOUR CHILD(REN).

[www.riograndeschool.org/summer](http://www.riograndeschool.org/summer)



RIO GRANDE SCHOOL

CHALLENGING, INSPIRING, AND  
NURTURING CHILDREN SINCE 1978

[RIOGRANDESCHOOL.ORG](http://RIOGRANDESCHOOL.ORG)

AGE 3 - GRADE 6

Rio Grande School does not discriminate on the basis of race, color, gender, sexual orientation, gender identity, or national or ethnic origin.

# Spring Break & Summer Camp Directory



"The Choice," by Delfin Peterson, age 12

## FUN AND LEARNING ON THE FARM

Camino de Paz Middle School and Espanola Valley Fiber Arts Center team up for Fun and Learning on the Farm summer camp, June 8 to 12 and June 15 to 19, for ages 7 to 11. Activities include caring for goats, sheep and chickens, cooking with farm produce and dairy products, weaving, tie-dyeing and other fiber crafts, stories and exploring the Santa Cruz River. Campers may join for either or both weeks. \$200 per student per week. Transportation from Santa Fe available for extra fee. For more information call (505) 231-2819 or email [caminodepazschool@gmail.com](mailto:caminodepazschool@gmail.com).

## GENOVEVA CHAVEZ COMMUNITY CENTER SUMMER CAMP "FES" TIVE

Fun, Educational and Safe programming for kids ages 6 to 12. Nine weekly sessions, June 1 to August 7, 7:30 a.m. to 5:30 p.m. Proof of age required for 6-year-olds. Weekly Camp, \$135 per camper. Half-day Sports Camp every other week, \$55. Combo Camps, \$155. Activities include sports, swimming, ice skating, art lessons, games, outdoor play and special field trips. Cost includes breakfast and lunch. Call Melissa at 955-4005 or Tiedra at 955-4014. [www.chavezcenter.com](http://www.chavezcenter.com).

## GIRLS INC. SUMMER CAMP

Do you want your girl to have a memorable camp experience? At Girls Inc. of Santa Fe we inspire ALL girls to be Strong, Smart and Bold. Your girl will have an opportunity to participate in fun, hands-on activities in a safe, girl-centered environment, while also enjoying science, sports, fieldtrips, art and fun! Our hours are from 7:30 a.m. to 6 p.m. Sliding scale tuition and scholarships available. Contact us at (505) 982-2042 or go to [www.girlsincofsantafe.org](http://www.girlsincofsantafe.org).

## GOLDEN ACORNS CAMP OF LIVING ARTS & CULTURE

Join Golden Acorns Summer Camp of Living Arts & Culture in our seventh year of camp! Our core curriculum promotes and teaches healthy and sustainable living practices such as Yoga and T'ai Chi, Gardening and Permaculture, and Compassionate Communication. Each week we feature the story, song and healing arts of a variety of world cultures. For ages 4 to 11. Camp is hosted at the Santa Fe Waldorf School from June 15 to July 10. Weekly cost \$250. Some financial aid available. [goldenacornscamp.com](http://goldenacornscamp.com) or call (505)795-9079.

## GROWING UP MONTESSORI SCHOOL SUMMER SESSIONS

For 2 to 6 year olds. Sessions are a laid-back extension of our school-year program, based in the Montessori Method. Activities include circle and story time, classroom work cycle, outside play, art projects, cooking, neighborhood walks, gardening and water play. Monday to Friday: 8 a.m. to 3 p.m. Aftercare available. Session One: Wednesday, May 27 to Friday, June 26. Session Two: Monday, June 29 to Friday, July 31. Call us at (505) 795-7256 or visit [growingupmontessori.com](http://growingupmontessori.com).

## JOJO'S SIZZLIN' SENSATIONAL SUMMER THEATRE CAMP

Ever want to write your own play? Teatro Paraguas Children's Theatre's talented JoJo Sena-Tarnoff will help kids write their own play by creating the plot, creating a character of their choosing, writing the songs and designing the sets! Summer camp for kids who have completed grades 3 through 8 takes place at Teatro Paraguas Studio Theatre, 3205 Calle Marie on Tuesdays, Thursdays and some Wednesdays from 11 a.m. to 2

p.m. Sliding scale tuition starts at \$200, with partial scholarships and payment plans available. [tpchildrensprogram.weebly.com](http://tpchildrensprogram.weebly.com), [tpchildrensprogram@gmail.com](mailto:tpchildrensprogram@gmail.com), 471-3140.

## LITTLE EARTH SCHOOL SUMMER DAY CAMP

Memorable summer experiences for children ages 4 to 12, June 1 through August 7. Five two-week sessions for all ages; minimum enrollment: one session. Three, four or five days per week. Tuition discount of 10 percent for children who enroll for the entire summer. Art, cooking, weekly nature field trips, swimming, yoga and games. Low student-teacher ratio. Enrollment limited. Little Earth School, 321 W. Zia Road, Santa Fe. For more information or a brochure and pre-registration form, call 988-1968.

## MAY CENTER FOR LEARNING

Summer academic skill-building programs in reading, writing and math for students entering grades K through 9. May Center for Learning, 2019 Galisteo, Building B, 983-7407. Visit [maycenter.org](http://maycenter.org) for more information and to register.

## MOTHER'S FARM SCHOOL SUMMER CAMP

Weeklong full-day camps with pre- and after-care for ages 5 to 12 and a Mentoring Program for ages 13 to 18, on a 10-acre farm off Highway 14 outside Santa Fe. Horseback riding, horsemanship games, Golden Retriever puppy training, nature painting, sculpting with hand-harvested farm clay, organic gardening, cooking, yoga, interactive group games, nonviolent communication, meditation, songwriting. May 22 to August 14 (except June 22 to 26). Transportation from Trader Joe's and Factory Outlet Mall. \$199/week, includes snack, materials and taxes. Sibling discounts. Visuddhi Brenda Wittner,

930-1838, [mothersfarmschool.com](http://mothersfarmschool.com), [cowgirlbrenda108@yahoo.com](mailto:cowgirlbrenda108@yahoo.com).

## MOUNTAIN KIDS SUMMER CAMP

Mountain Kids Summer Camp immerses children ages 5 to 12 in nature all day, every day. Campers meet at Fort Marcy Park and go on daily adventures into the mountains to explore, learn and play in nature. Kids learn wilderness skills, make art, hike, sing, learn about nature and teamwork, and most of all — get dirty and have fun! New programming for 2015 includes backpacking, mountain biking, advanced wilderness skills and more. Weekly themes, weekly or biweekly enrollment. For more information visit [www.santafemountainkids.com](http://www.santafemountainkids.com).

## PANDEMONIUM PRODUCTIONS' MUSICAL THEATRE SUMMER CAMP

Musical theater summer camp for ages 7 to 17, June 15 to July 26. Study acting, singing and dancing and perform in a Broadway-style musical (soon to be named) at the James A. Little Theater. Previous productions have included "Shrek! The Musical," "The Little Mermaid," "The Wizard of Oz," "Bye Bye Birdie," and "Grease." Rehearsals take place at the New Mexico School for the Arts, Monday through Friday, 9 a.m. to 1 p.m. Space is limited; scholarships available. Tuition \$695, including \$100 registration deposit. Visit [pandemoniumprod.org](http://pandemoniumprod.org), or call 920-0704.

## POMEGRANATE SEEDS WORLD DANCE CAMPS FOR GIRLS

Self-Esteem, Empowerment and Education through Dance for girls ages 10 to 16. Explore world dance, sew a costume piece, learn stage make-up, history, culture, costuming, film, journaling, poetry, art and talking circles. Camp 1: July 13 to 17. Camp 2: July 20 to 24. Camp 3: July 27 to July 31. Camps run Monday through Friday, 8:30 a.m. to 5

# Spring Break & Summer Camp Directory

p.m. \$235 per week plus tax and materials fee. Contact Myra Krien, 986-6164, or pomegranatesfm@yahoo.com.

## RIDING LESSONS AT ARROWHEAD RANCH

Riding Horses = FUN! Beginners welcome, kids and adults, ages 6 and up. Lessons on safe, gentle horses in a supportive atmosphere on a beautiful ranch minutes from downtown Santa Fe. Private or small group lessons on grooming, care, arena/trail course riding and games on horseback. After-school and weekend classes, and special weeklong summer sessions. Arrowhead Ranch is 2.5 miles west of St. Francis Drive, on W. Alameda. Call for rates and dates: Sandy, 424-7592, or email: sandybenson@earthlink.net.

## RIO GRANDE SCHOOL SUMMER CAMP

Weekly camps for grades K through 6. Half day and full day options available. Morning enrichment classes in Chinese language and culture, computer programming, art, music, creative writing graphic design and more! Swimming, field trips and hiking in the afternoons. Camp runs from 8:30 a.m. to 4 p.m. with optional early and aftercare. Contact Neal Turnquist at 983-1621 or email summer@riograndeschool.org for more information.

## SFAI DESIGN WORKSHOP

The Santa Fe Art Institute (SFAI) presents a college preparatory, project-based summer intensive that provides high school students with an introduction to architecture, design-making skills and community-engagement techniques.

Taking place in Santa Fe and in the Santo Domingo Pueblo, SFAI Design workshop is exciting, innovative and challenging. June 1 to July 9, Monday through Thursday, 9 a.m. to 4 p.m. on the campus of the Santa Fe University of Art and Design. Three hours of college credit available. Call 424-5050, visit [www.sfai.org/designworkshop](http://www.sfai.org/designworkshop) or write to [designworkshop@sfai.org](mailto:designworkshop@sfai.org).

## SANTA FE CHILDREN'S MUSEUM EXPLORERS SUMMER CAMP

For pre-K and K children, 4 to 5 year olds, 9 a.m. to 3 p.m. (extended care available), \$270 per weekly session for museum members, \$295 for nonmembers, with a \$5 discount on multiple sessions. June 1 to 5: Sow Seeds & Sauté. June 8 to 12: Little Builders. June 15 to 19: Magic in the Garden. June 22 to 26: Color Me Happy. Preregistration required. For more information and to register, call 989-8359 ext. 115, or email [summercamp@santafechildrensmuseum.org](mailto:summercamp@santafechildrensmuseum.org). 1050 Old Pecos Trail Santa Fe.

## SANTA FE CLIMBING CENTER CLIMBING ADVENTURE CAMPS & CLASSES

Indoor and outdoor climbing, wilderness survival skills, hikes and other outdoor adventure-based activities. Weeklong camps, 8 a.m. to 4 p.m., \$349 per week. Multi-day summer camps, for ages 5 to 8: May 26, June 1, 8, 22, 29, July 6, August 10, 17, 24; and for ages 9 to 13: June 8, 15, July 13, 20, 27, August 10, 17 and 24. Summer indoor climbing classes: Tuesdays and

Thursdays, 1 to 2:30 p.m. 825 Early Street. Call 986-8944 or visit [www.climbsantafe.com/camps/](http://www.climbsantafe.com/camps/).

## SANTA FE COMMUNITY COLLEGE SUMMER PROGRAM

Offering programs for toddlers to teens. Intellectual and experiential learning through camps in swimming (ages 3 through 13), outdoor adventures (ages 10 through 15), computer programming (ages 9 through 17), plus cooking, music, art and design (ages 8 through 17). Kids First! Film Critics Boot Camp is new this year. For information call 428-1676 or visit [www.sfcc.edu/kids](http://www.sfcc.edu/kids).

## SANTA FE PERFORMING ARTS SUMMER YOUTH PROGRAMS

Programs run Mondays through Fridays, June 15 to July 26. Classes for 7 to 12 year olds meet 9 a.m. to 1 p.m. Teen class meets 1:30 p.m. to 5:30 p.m. Both culminate in main-stage productions, on the weekends of July 17 and 24. Shows' titles to be announced. Scholarships available. Call 982-7992, email [sabato@sfperformingarts.org](mailto:sabato@sfperformingarts.org), or visit [www.sfperformingarts.org](http://www.sfperformingarts.org) and go to the "Classes" section. Endorsed by the National Education Association of New Mexico and the recipient of the 2012 Mayor's Award for Excellence in the Arts.

## SANTA FE SCHOOL FOR THE ARTS & SCIENCES SUMMER CAMP 2015

June 8 to August 7 (no camp week of July 6 to 10). Ages 3 and 4: Move & Play Camps. Ages 5 and 6: Imagine That!

Camps. Ages 7 and 8: Discovery Camps. Ages 9 to 13: Exploration Camps. Ages 13 and up: Investigation Camps. Themes include Ooey Goey; Princesses, Dragons and Knights, Oh My!; Camp Minecraft; Project Runway; Backpacking; Japan Camp and Coding, just to name a few. Most weekly camps cost \$220. Financial aid available. For more information: (505) 438-8585, [office@santafeschool.org](mailto:office@santafeschool.org), [www.santafeschool.org](http://www.santafeschool.org).

## SKATE SCHOOL SANTA FE

Ramps and Bowls Camps: Young riders will get expert instruction, mornings at public skate parks and afternoon at our indoor park, for ages 8 and up, 9 a.m. to 4 p.m. May 25 to 29, June 8 to 12, June 29 to July 3, July 20 to 24; \$250. Long Board Camps in Santa Fe: Ride the school's boards and learn to turn, stop and slide while riding local bike paths and at our indoor park, for ages 9 and up, 9 a.m. to 4 p.m. June 1 to 3, June 22 to 24, July 13 to 15, August 3 to 5; \$180. 825 Early Street #H, Santa Fe, 474-0074. [SkateboardSafety.com](http://SkateboardSafety.com), 474-0074.

## SUMMER STUDENT WRITING INSTITUTE

Creative Writing for Teens: June 8 to 19, Monday to Friday, 4-5:30 p.m., ages 12 to 19 to brainstorm, write and revise a short story ready to be read an open mic on June 19, \$220. Stories and Snacks: June 1 to 5, Monday to Friday, 4-5:30 p.m., ages 9 to 12, dream, think, write and share at an open mic (optional), \$120. Call now about writing tutoring. Janie Chodosh, [jchodosh2@yahoo.com](mailto:jchodosh2@yahoo.com), 660-0217.

# One Last Chance!

If you missed listing your program in the Summer Camp Directory in this issue, fear not! Tumbleweeds' 2015 Summer Camp and Program Directory will appear in our Summer Issue!

Listings are free for display advertisers or \$50 plus tax for others.

Submit a description of up to 85 words by email ([info@sftumbleweeds.com](mailto:info@sftumbleweeds.com))

or mail:

Tumbleweeds, 369 Montezuma #191  
Santa Fe, NM 87501

Or use the easy click-and-send form on our website, [www.sftumbleweeds.com](http://www.sftumbleweeds.com).

Deadline for sending directory listings and reserving display ads is May 1 for our Summer 2015 (June, July & August) issue.

Publication date is May 20.

Questions? Call 984-3171 or [info@sftumbleweeds.com](mailto:info@sftumbleweeds.com)



## GOLDEN ACORNS

### Summer Camp of Living Arts & Culture for ages 4-11

Compassionate Communication

Cultural Experiences

Permaculture, Gardening, and Herbalism

Intuitive Development

Yoga & T'ai Chi

Art & Games



Story • Music • Healing Arts • Dance

June 15-19 CAMEROON & NIGERIA  
Indigo Printing • Cooking • Drumming

June 22-26 NEW MEXICO & CAMPING  
Apache Games • Pottery  
Overnight camping at the SF Treehouse

June 29-July 3 MEDITERRANEAN & THE MIDDLE EAST  
with Shiatsu

July 6-July 10 URBAN CULTURE  
Breakdancing • Graffiti Art • Hip-Hop

\$250/week • Pre & After-Care Available  
Half or Full Days for 4 & 5 Year Olds  
Some Financial Aid Available

CONTACT US: (505) 795.9079  
or [goldenacornscamp@gmail.com](mailto:goldenacornscamp@gmail.com)

[www.goldenacornscamp.org](http://www.goldenacornscamp.org)

Located at the Santa Fe Waldorf School  
26 Puesta Del Sol, 87508

# Spring 2015 Calendar – March



"Colors," by Sitara Ataveley Bauer, age 14

Events are free, or included in the price of museum admission, unless otherwise noted. **P** indicates an event especially for parents.

## MARCH

### 1 SUNDAY, 8 A.M.-5 P.M. First Sundays!

First Sunday of every month, the New Mexico Museum of Natural History and Science is free to all New Mexico resident with ID or proof of residence. New Mexico Museum of Natural History, 1801 Mountain Road, Albuquerque, (505) 841-2800.

### 1 SUNDAY, 9:30-11 A.M.

#### Russian Language and Math Group

Russian speakers immerse children ages 2 to 12 in the language, with an emphasis on learning math. Parents can socialize while kids learn. Los Alamos Family Strengths Network, 1990 Diamond Drive, Los Alamos, 662-4515.

### 1 SUNDAY, 11 A.M.-1 P.M.

#### Parenting in the First Year

Designed for families with children 1 year and under, to cover topics including nutrition, safety, infant development and other baby needs. \$65 per couple for two-part class. Two Sundays, sponsored by The Birthing Tree, at Indigo Baby, DeVargas Mall, 185 Paseo de Peralta, Santa Fe. For more information, email [katie@thebirthingtree.com](mailto:katie@thebirthingtree.com).

### 1 SUNDAY, 2 P.M.

#### Camino de Paz Montessori Middle School Open House

Presentation of the school curriculum and Montessori philosophy, followed by Q&A with staff and parents, and student-led tours. (505) 231-2819, [www.caminodepaz.net](http://www.caminodepaz.net).

### 2 MONDAY, 9-11 A.M.

#### Toddler Time

A time just for toddlers, up to age 4, and their adult companions to enjoy and participate in special activities like story time and music jams. Explora!, 1701 Mountain Road, Albuquerque, (505) 224-8300.

### 2 MONDAY TO 31 TUESDAY, 3:30-5:30 P.M.

#### After-School Art

Drawing, painting and printmaking explorations offered Monday through Thursday every week. Collage and mixed media on Fridays. Children's Art Space, 1219 Luisa Street #6, 490-2119.

### 2 MONDAY, 6:30-7:30 P.M.

#### Family Story Time

Fun stories and hands-on activities. Oliver La Farge Branch Library, 1730 Llano Street, 955-4863.

### 2 MONDAY, 6:30-8 P.M.

#### Birth Talk Los Alamos

Learn about options in pregnancy and childbirth and share experiences of birth. First Monday of every month. Los Alamos Family Strengths Network, 1990 Diamond Drive, Los Alamos, 662-4515.

### 3 TUESDAY

#### Wags and Words

Children read to a Reading Education Assistance Dog. Great for beginning and

reluctant readers. Tuesdays and Wednesdays. Dogs schedules vary; call for an appointment. Vista Grande Public Library, 14 Avenida Torreón, 466-7323.

### 3 TUESDAY, 9:30-10:15 A.M.

#### Family Yoga

Stories, songs, games and yoga for adults and children. \$10 per family. Los Alamos Family Strengths Network, 1990 Diamond Drive, Los Alamos, 662-4515.

### 3 TUESDAY, 10:30-11 A.M.

#### Books and Babies

Books, songs and finger games for ages 6 months to 2 years. Caregivers welcome. Main Library, 145 Washington Avenue, 955-6783.

### 3 TUESDAY, 10:30-11:15 A.M.

#### Preschool Storytime

Stories, rhymes and crafts for ages 2 to 5. Caregivers welcome. Oliver La Farge Branch Library, 1730 Llano Street, 955-4863.

### 3 TUESDAY, 10:30 A.M.-12:30 P.M.

#### Chit Chat and Change Diapers

Informal discussion group for parents to learn and share. Children welcome. Los Alamos Family Strengths Network, 1990 Diamond Drive, Los Alamos, 662-4515.

### 4 WEDNESDAY

#### Wags and Words

Vista Grande Public Library. See March 3 listing.

### 4 WEDNESDAY, 10:30-11 A.M.

#### Books and Babies

Books, songs and finger games for ages 6 months to 2 years. Caregivers welcome. Oliver La Farge Branch Library, 1730 Llano Street, 955-4863.

### 4 WEDNESDAY, 10:30-11 A.M.

#### Wee Wednesday

Enjoy bilingual preschool stories, songs and games. Santa Fe Children's Museum, 1050 Old Pecos Trail, 989-8359.

### 4 WEDNESDAY, 10:45-11:15 A.M.

#### Preschool Storytime

Stories, rhymes and crafts for ages 2 to 5. Caregivers welcome. Southside Library, 6599 Jaguar Drive, 955-4863.

### 4 WEDNESDAY, 1-2:30 P.M.

#### LEGO Club

Hands-on and minds-on fun for LEGO experts and beginners. One-time \$10 fee per family per school year. Ages 5 to 12, must be accompanied by an adult. Los Alamos Family Strengths Network, 1990 Diamond Drive, Los Alamos, 662-4515.

### 4 WEDNESDAY, 3-4:30 P.M.

#### After-School Reading Club

Reading, games, crafts and other fun activities for students in kindergarten through grade 4. Call to register. Vista Grande Public Library, 14 Avenida Torreón, 466-7323.

### 4 WEDNESDAY, 5:30-7 P.M.

#### Choosing Where to Have Your Baby: Options in Childbirth

Birthing Tree offers insight and guidance to all questions about where to labor and birth your beautiful baby including hospitals, birth centers or even home. [Info@thebirthingtree.com](mailto:Info@thebirthingtree.com).

### 5 THURSDAY, 10:45-11:15 A.M.

#### Books and Babies

Books, songs and finger games for ages 6 months to 2 years. Caregivers welcome. Southside Library, 6599 Jaguar Drive, 955-4863.

### 5 THURSDAY, 10:45-11:30 A.M.

#### Children's Story Hour

Weekly storytime for children 6 months to 5 years. All children must be supervised by an adult. Collected Works Bookstore, 202 Galisteo Street, 988-4226.

### 5 THURSDAY, 11-11:45 A.M.

#### Firefighter Storytime

Local firefighters share a favorite book and a few fire safety tips on the first Thursday of each month. A fire truck will be onsite when possible. Firefighters will be on duty and may need to leave to take care of an emergency. Santa Fe Children's Museum, 1050 Old Pecos Trail, 989-8359.

### 5 THURSDAY, 4-6:30 P.M.

#### Thursdays are Yoursdays!

If you've never been to the Children's Museum before or you want to try something new, this is your day. Children 16 and under are admitted free on Thursdays after 4 p.m. Santa Fe Children's Museum, 1050 Old Pecos Trail, 989-8359.

### 5 THURSDAY, 4:30-5:30 P.M.

#### The Cornelius Hour

Watch the museum's snake eat his weekly meal, draw pictures of what you see, write a poem and learn new facts about snakes. Santa Fe Children's Museum, 1050 Old Pecos Trail, 989-8359.

### 5 THURSDAY, 5-7 P.M.

#### Break Dancing Classes

Drop-in classes for aspiring B-Boys and B-Girls. Classes also on Fridays. Warehouse 21, 1614 Paseo de Peralta, 989-4423.



# Spring 2015 Calendar – March

**5 THURSDAY, 6 P.M.**

**Pajama Tales from the Book Nook**

Wind-down story time featuring a guest reader. Kids are encouraged to wear pajamas. Teddy bears and woobies welcome. Santa Fe Children's Museum, 1050 Old Pecos Trail, 989-8359.

**5 THURSDAY, 6:30-8 P.M.**

**Baby Makes Three**

Strengthen mind and marriage in preparation for the new baby. Relax and enjoy learning, refreshments and the company of others. Classes \$75 per family. Call for more information. Los Alamos Family Strengths Network, 1990 Diamond Drive, Los Alamos, 662-4515.

**6 FRIDAY, 10 A.M.-NOON**

**Fam Jam!**

Each child participates at his or her own level in singing, moving, chanting, listening, watching, or exploring musical instruments. Contact [devi@famjam.net](mailto:devi@famjam.net) or call to register. Indigo Baby, De Vargas Center, 564 North Guadalupe, 954-4000.

**6 FRIDAY, 10:30-11:30 A.M.**

**Introduction to Essential Oils**

Learn all about what essential oils can do for the entire family. To register, or for more information, [Info@thebirthingtree.com](mailto:Info@thebirthingtree.com).

**6 FRIDAY, 11-11:45 A.M. A.M.**

**Preschool Storytime**

Stories, rhymes and crafts for ages 2 to 5. Caregivers welcome. Main Library, 145 Washington Avenue, 955-6783.

**6 FRIDAY, 11 A.M.-NOON**

**Story Time**

Weekly stories, songs and crafts for infants and toddlers. Caregivers welcome. Vista Grande Public Library, 14 Avenida Torreon, 466-7323.

**6 FRIDAY, 2-4 P.M.**

**Friday Afternoon Art**

Art program for families. Supplies provided. Main Library, 145 Washington Avenue, 955-6783.

**6 FRIDAY, 2:30-4:30 P.M.**

**Open Art Studio**

Work with a local artist to explore everything from acrylics, pastels, and watercolor to blocks and glue. Santa Fe Children's Museum, 1050 Old Pecos Trail, 989-8359.

**6 FRIDAY, 4:30-6:30 P.M.**

**First Friday**

Explore the use of viewfinders to make art compositions, just as Georgia O'Keeffe did. Georgia O'Keeffe Museum, 217 Johnson Street, 946-1039.

**6 FRIDAY, 5-7 P.M.**

**Disco On Ice**

Groovy night of disco music, lights and ice skating. Admission and skate rental \$5.50. Genoveva Chavez Community Center, 3221 Rodeo Road, 955-4014.

**6 FRIDAY, 5-8 P.M.**

**First Fridays**

Enjoy free art and music and free museum admission the first Friday of every month. New Mexico Museum of Art, 107 West Palace Avenue, 476-5068.

**7 SATURDAY, 10:15-11:45 A.M.**

**Sibshops**

Recreational setting for kids to play spirited games, laugh and talk about the good and not-so-good of having a sibling with special needs. Siblings learn how to handle common experiences. Ages 8 to 12, \$50 per family. Los Alamos Family Strengths Network, 1990 Diamond Drive, Los Alamos, 662-4515.

**7 SATURDAY, 1-4 P.M.**

**Reading Tune-Ups**

Reading diagnostic: Parents and kids watch what happens during reading and learn how to improve reading comprehension and rate. Ages 8 and up. Free; registration required. Contact Floy Gregg, 570-1276.

**7 SATURDAY, 5 P.M.**

**Ravel-Ation**

Celebrate the music of Maurice Ravel as the Taos Chamber Music Group play on his 140th birthday. Tickets \$22, children 16 and under \$12. Harwood Museum of Art, 238 Ledoux Street, Taos, (575) 758-9826.

**8 SUNDAY, 9:30-11 A.M.**

**Russian Language and Math Group**

Los Alamos Family Strengths Network. See March 1 listing.

**8 SUNDAY, 11 A.M.-1 P.M.**

**Parenting in the First Year**

[Info@thebirthingtree.com](mailto:Info@thebirthingtree.com). See March 1 listing.

**8 SUNDAY, 5 P.M.**

**Ravel-Ation**

Harwood Museum of Art, Taos. See March 7 listing. Harwood Museum of Art, 238 Ledoux Street, Taos, (575) 758-9826.

**8 SUNDAY, 7 P.M.**

**Jesus Muñoz Flamenco**

Rip-rhyming melodies fill your ears as musicians and dancers are accompanied by the intricacies of the sped-up, half-time, hip-infected footwork. Call for tickets. Lencic Performing Arts Center, 211 West San Francisco Street, 988-1234.

**9 MONDAY, 9-11 A.M.**

**Toddler Time**

Explora!, Albuquerque. See March 2 listing.

**9 MONDAY, 3:30-5:30 P.M.**

**After-School Art**

Children's Art Space. See March 2 listing.

**10 TUESDAY**

**Wags and Words**

Vista Grande Public Library. See March 3 listing.

**10 TUESDAY, 9:30-10:15 A.M.**

**Family Yoga**

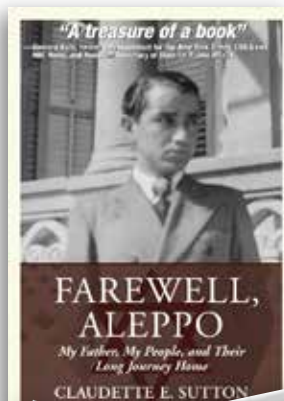
Los Alamos Family Strengths Network. See March 3 listing.

**10 TUESDAY, 10:30-11 A.M.**

**Books and Babies**

Main Library. See March 3 listing.

## Experience the Journey



Now available in print and eBook format, online and from your favorite independent bookstore.



# FAREWELL, ALEPPO

*My Father, My People, and Their Long Journey Home*

BY CLAUDETTE E. SUTTON

"Claudette Sutton offers us not only the story of the vanished Syrian-Jewish culture in Aleppo, now a battleground in Syria's civil war, but also a look at how that culture still survives, and still nourishes Syrian Jews now living in America."

—Bernard Kalb, former correspondent for the *New York Times*, *CBS News*, *NBC News*, and Assistant Secretary of State for Public Affairs.

**"A treasure of a book" —Bernard Kalb**

# KIDS SUMMER SWUFF



**Swimming, Culinary, Ropes and Challenge Camps... and More!**

**Register Today!**

505-428-1676  
[www.sfcc.edu](http://www.sfcc.edu)





# Spring 2015 Calendar – March

## 19 THURSDAY, 10:45-11:15 A.M.

**Books and Babies**  
Southside Library. See March 5 listing.

## 19 THURSDAY, 10:45-11:30 A.M.

**Children's Story Hour**  
Collected Works Bookstore. See March 5 listing.

## 19 THURSDAY, 4-6:30 P.M.

**Thursdays are Yoursdays!**  
Santa Fe Children's Museum. See March 5 listing.

## 19 THURSDAY, 4:30-5:30 P.M.

**The Cornelius Hour**  
Santa Fe Children's Museum. See March 5 listing.

## 19 THURSDAY, 5-7 P.M.

**Art and Sculpture Exhibition Opening Night**

New Mexico School for the Arts ninth-grade students present their art. Show runs through April 6. Warehouse 21, 1614 Paseo de Peralta, 989-4423.

## 19 THURSDAY, 5-7 P.M.

**Break Dancing Classes**  
Warehouse 21. See March 5 listing.

## 19 THURSDAY, 5:30-8 P.M.

**Audio Revolution on Museum Hill**  
A Listening Event hosted by the Gallery of Conscience, in collaboration with Youth Media Project of Santa Fe and ¡YouthWorks! Come hear the premiere of media projects created by students in the Santa Fe YouthBuild program, in response to interviews with artists from the Between Two Worlds exhibition in the Gallery of Conscience. These radio segments will be featured on Youth Media Project's Audio Revolution! Program, on KUNM, KSFR and KRZA. Free. Museum Hill, 701 Camino Lejo, Santa Fe.

## 19 THURSDAY, 6 P.M.

**Pajama Tales from the Book Nook**  
Santa Fe Children's Museum. See March 5 listing.

## 19 THURSDAY, 6:30-8 P.M.

**Baby Makes Three**  
Los Alamos Family Strengths Network. See March 5 listing.

## 20 FRIDAY, 10 A.M.-NOON

**Fam Jam!**  
Indigo Baby. See March 6 listing.

## 20 FRIDAY, 11-11:45 A.M.

**Preschool Storytime**  
Main Library. See March 6 listing.

## 20 FRIDAY, 11 A.M.-NOON

**Story Time**  
Vista Grande Public Library. See March 6 listing.

## 20 FRIDAY, 2:30-4:30 P.M.

**Open Art Studio**  
Santa Fe Children's Museum. See March 6 listing.

## 20 FRIDAY, 4-5 P.M.

**Percussion Lady**  
Interactive drumming program for the entire family. Oliver La Farge Branch Library, 1730 Llano Street, 955-4863.

## 20 FRIDAY, 6:30 P.M.

**Aquarium Overnight**  
Explore the Aquarium at night, learning about ocean animals and their nighttime behavior. Visit the Touchpool, play a game, get crafty and

take in a marine movie at the Aquarium theater. Overnight ends Saturday at 8 a.m., Saturday. \$30 per person. ABQ BioPark Aquarium, 2601 Central Avenue, Albuquerque, (505) 848-7180.

## 20 FRIDAY, 6:30 P.M.

**Autism Society Santa Fe Group Meeting**

Support for parents with children affected by ASD. Group will meet to plan family events and activities for children available during meetings. Holy Family Episcopal Church, 10 A Bisbee Court, 424-0095.

## 21 SATURDAY, 9:30-11 A.M.

**Opera Makes Sense**  
The Santa Fe Opera collaborates to present an innovative program for children ages 3 to 5. Interdisciplinary experience that focuses on learning and communicating through the five senses. Reservations suggested. Georgia O'Keeffe Museum, 217 Johnson Street, 946-1039.

## 21 SATURDAY, 10 A.M.-NOON

**Open House**  
Meet teachers, watch a slide show, share refreshments and learn about the summer and fall session. Journey Montessori School, 1212 Unity Way, (505) 470-8928.

## 21 SATURDAY, 10 A.M.-2 P.M.

**National Quilting Day**  
Celebrate National Quilting Day with a quilting exhibition at the Botanic Garden. ABQ BioPark Botanic Garden, 2601 Central Avenue, Albuquerque, (505) 764-6200.

## 21 SATURDAY, 11 A.M.-NOON

**Percussion Lady**  
Interactive drumming program for the entire family. Main Library, 145 Washington Avenue, 955-6783.

## 21 SATURDAY, 11 A.M.-1 P.M.

**Tennis Play Day for Children and Adults**  
Area tennis clubs, nonprofit organizations and local pros will share information on tennis programs currently offered for beginners through advanced levels. Free. Shellaberger Tennis Center, 1600 1/2 St. Michaels Drive. Register at [www.youthtennis.com](http://www.youthtennis.com) or call (505) 473-6144.

## 21 SATURDAY, 1-4 P.M.

**Mom's Emotional Well Being: Therapeutic Support Group**  
Work as a group to strengthen skills in self-care, self-awareness and empowerment. Leave the little ones at home and take time just for yourself. To register, or for more information, [Info@thebirthingtree.com](mailto:Info@thebirthingtree.com)

## 21 SATURDAY, 1-4 P.M.

**Reading Tune-Ups**  
Offered by Floy Gregg. See March 7 listing.

## 21 SATURDAY, 2:30-3:30 P.M.

**Percussion Lady**  
Interactive drumming program for the entire family. Southside Library, 6599 Jaguar Drive, 955-4863.

## 21 SATURDAY, 5:30-9 P.M.

**Diving into Dinner**  
Plan a special dinner at the ABQ BioPark Aquarium's Shark Reef Cafe for a Chef-inspired meal. Price based on market costs. Reservation recommended. ABQ BioPark Aquarium, 2601 Central Avenue, Albuquerque, (505) 848-7180.

## 21 SATURDAY, 7:30 P.M.

**The Best of Ron Bloomberg**  
Veteran comedy writer Ron Bloomberg dazzles with five 15-minute one-act plays, for teens. General admission \$20. Warehouse 21, 1614 Paseo de Peralta, 989-4423.

## 22 SUNDAY, 9:30-11 A.M.

**Russian Language and Math Group**  
Los Alamos Family Strengths Network. See March 1 listing.

## 22 SUNDAY, 9:30 A.M.-12:30 P.M.

**Newborn Care Class**  
This class for parents, grandparents and caretakers covers feeding, calming, bathing, eat and sleep patterns, as well as tips on how parents can take care of themselves during the first three months with a newborn. \$65 per family. [Info@thebirthingtree.com](mailto:Info@thebirthingtree.com).

## 22 SUNDAY, NOON-5 P.M.

**A Year of Celebrations: Make Your Own Holiday**  
Create and plan your own holidays, complete with proclamation documents, customs and cards to take home. Santa Fe Children's Museum, 1050 Old Pecos Trail, 989-8359.

## 22 SUNDAY, 2 P.M.

**The Best of Ron Bloomberg**  
Warehouse 21. See March 21 listing.

## 22 SUNDAY, 2-4 P.M.

**Pottery Demonstration**  
Mike Craven and Pottery of the U.S. South demonstrate face jug making. Included with

museum admission. Museum of International Folk Art, 706 Camino Lejo, 476-1200.

## 22 SUNDAY, 4 P.M.

**Les Violons Du Roy**  
Canadian 15-member chamber orchestra dazzles audiences with virtuosity and musicianship. Call for tickets. Lencis Performing Arts Center, 211 West San Francisco Street, 988-1234.

## 23 MONDAY, 9-11 A.M.

**Toddler Time**  
Explora!, Albuquerque. See March 2 listing.

## 23 MONDAY, 10 A.M.-6 P.M.

**Twirl Playspace**  
Twirl, Taos. See March 16 listing.

## 23 MONDAY, 3:30-5:30 P.M.

**After-School Art**  
Children's Art Space. See March 2 listing.

## 23 MONDAY, 7 P.M.

**Jazz Documentary**  
Presented by Santa Fe Music Collective. Warehouse 21, 1614 Paseo de Peralta, 989-4423.

## 24 TUESDAY

**Wags and Words**  
Vista Grande Public Library. See March 3 listing.

## 24 TUESDAY, 8:30-10:30 A.M.

**Open House**  
Santa Fe Waldorf School invites parents and visitors to visit classrooms. To reserve your space, call Brent, 467-6431. Santa Fe Waldorf School, 26 Puesta Del Sol.



United Way of Santa Fe County

# FREE Pre-Kindergarten

We offer free, high-quality Pre-K classes and are currently accepting applications for the 2015-2016 school year.

Full-day and half-day sessions available.  
Children must be 4-years-old by September 1, 2015

**APPLY TODAY!**

Location: The Early Learning Center at Aspen  
430 La Madera, Santa Fe, NM 87501  
Monday – Friday from 9 AM – 4 PM

To apply, bring your child's birth certificate, current immunization records and one form of address verification (rental agreement, mortgage statement or utility bill).

For more information,

Contact Elsa Escoto at 505-819-9689 or [elsae@uwsfc.org](mailto:elsae@uwsfc.org).



United Way of Santa Fe County

# Spring 2015 Calendar – March/April

**24 TUESDAY, 9:30-10:15 A.M.**

**Family Yoga**  
Los Alamos Family Strengths Network. See March 3 listing.

**24 TUESDAY, 10:30-11 A.M.**

**Books and Babies**  
Main Library. See March 3 listing.

**24 TUESDAY, 10:30-11:15 A.M.**

**Preschool Storytime**  
Oliver La Farge Branch Library. See March 3 listing.

**24 TUESDAY, 10:30 A.M.-NOON**

**BreastFeeding Support Circle**  
Info@thebirthingtree.com. See March 10 listing.

**24 TUESDAY, 10:30 A.M.-12:30 P.M.**

**Chit Chat and Change Diapers**  
Los Alamos Family Strengths Network. See March 3 listing.

**25 WEDNESDAY**

**Wags and Words**  
Vista Grande Public Library. See March 3 listing.

**25 WEDNESDAY, 10:30-11 A.M.**

**Books and Babies**  
Oliver La Farge Branch Library. See March 4 listing.

**25 WEDNESDAY, 10:30-11 A.M.**

**Wee Wednesday**  
Santa Fe Children's Museum. See March 4 listing.

**25 WEDNESDAY, 10:45-11:15 A.M.**

**Preschool Storytime**  
Southside Library. See March 4 listing.

**25 WEDNESDAY, 1-2:30 P.M.**

**LEGO Club**  
Los Alamos Family Strengths Network. See March 4 listing.

**25 WEDNESDAY, 3-4:30 P.M.**

**After-School Reading Club**  
Vista Grande Public Library. See March 4 listing.

**26 THURSDAY, 10:45-11:15 A.M.**

**Books and Babies**  
Southside Library. See March 5 listing.

**26 THURSDAY, 10:45-11:30 A.M.**

**Children's Story Hour**  
Collected Works Bookstore. See March 5 listing.

**26 THURSDAY, 2-4 P.M.**

**Pysanky Egg Design**  
Ukrainian egg decoration program for children. Main Library, 145 Washington Avenue, 955-6783.

**26 THURSDAY, 4-6:30 P.M.**

**Thursdays are Yoursdays!**  
Santa Fe Children's Museum. See March 5 listing.

**26 THURSDAY, 4:30-5:30 P.M.**

**The Cornelius Hour**  
Santa Fe Children's Museum. See March 5 listing.

**26 THURSDAY, 5-7 P.M.**

**Break Dancing Classes**  
Warehouse 21. See March 5 listing.

**26 THURSDAY, 6 P.M.**

**Pajama Tales from the Book Nook**  
Santa Fe Children's Museum. See March 5 listing.

**26 THURSDAY, 6:30-8 P.M.**

**Baby Makes Three**  
Los Alamos Family Strengths Network. See March 5 listing.

**27 FRIDAY, 7:30 A.M.-5:30 P.M.**

**School Closure Day Camp**  
Games, sports, swimming, ice skating, arts and crafts, for children 6 to 12, \$35. Genoveva Chavez Community Center, 3221 Rodeo Road. Call Melissa Bustos, 955-4005.

**27 FRIDAY, 8 A.M.-5:30 P.M.**

**Children's Art Space Spring Break Camp**

Spend spring break drawing, painting and printmaking with some 3D projects as well. Art camps are offered March 27, and March 30 through April 3; enroll for any or all days, half or full-days. \$30 per half day, \$50 per full day. Scholarships available. Children's Art Space, 1219 Luisa Street #6, 490-2119.

**27 FRIDAY, 10-10:45 A.M.**

**Family Belly Dancing**  
Los Alamos Family Strengths Network. See March 13 listing.

**27 FRIDAY, 10 A.M.-NOON**

**Fam Jam!**  
Indigo Baby. See March 6 listing.

**27 FRIDAY, 11-11:45 A.M.**

**Preschool Storytime**  
Main Library. See March 6 listing.

**27 FRIDAY, 2-4 P.M.**

**Pysanky Egg Design**  
Ukrainian egg decoration program for children. Main Library, 145 Washington Avenue, 955-6783.

**27 FRIDAY, 2:30-4:30 P.M.**

**Open Art Studio**  
Santa Fe Children's Museum. See March 6 listing.

**28 SATURDAY, 9 A.M.-5 P.M.**

**Backyard Garden Train Show**  
Members of New Mexico Garden Railroaders Club demonstrate how to bring gardens to life with motion and sound through the use of miniature trains and landscapes. ABQ BioPark Botanic Garden, 2601 Central Avenue, Albuquerque, (505) 764-6200.

**28 SATURDAY, 1-3 P.M.**

**Prehistoric Preschool**  
Day Sky and Night Sky. Observe the sky, both during the day and at night: clouds, the sun and moon, and, is that a star? Notice what you see and discover why it happens. New Mexico Museum of Natural History, 1801 Mountain Road, Albuquerque, (505) 841-2800.

**28 SATURDAY, 2:30-4:30 P.M.**

**Family Movie Matinee**  
Family-oriented movies with light refreshments. Southside Library, 6599 Jaguar Drive, 955-4863.

**28 SATURDAY, 7:30 P.M.**

**The Best of Ron Bloomberg**  
Warehouse 21. See March 21 listing.

**29 SUNDAY, 9:30-11 A.M.**

**Russian Language and Math Group**  
Los Alamos Family Strengths Network. See March 1 listing.



"The Healing Touch," by Hannah Weybright, age 13

**29 SUNDAY, 2 P.M.**

**The Best of Ron Bloomberg**  
Warehouse 21. See March 22 listing.

**30 MONDAY, 8 A.M.-5:30 P.M.**

**Children's Art Space Spring Break Camp**  
See March 27 listing.

**30 MONDAY, 9-11 A.M.**

**Toddler Time**  
Explora!, Albuquerque. See March 2 listing.

**31 TUESDAY, 8 A.M.-5:30 P.M.**

**Children's Art Space Spring Break Camp**  
See March 27 listing.

**31 TUESDAY, 9:30-10:15 A.M.**

**Family Yoga**  
Los Alamos Family Strengths Network. See March 3 listing.

**31 TUESDAY, 10:30-11 A.M.**

**Books and Babies**  
Main Library. See March 3 listing.

**31 TUESDAY, 10:30-11:15 A.M.**

**Preschool Storytime**  
Oliver La Farge Branch Library. See March 3 listing.

**31 TUESDAY, 10:30 A.M.-12:30 P.M.**

**Chit Chat and Change Diapers**  
Los Alamos Family Strengths Network. See March 3 listing.

**31 TUESDAY, 1-3 P.M.**

**Family Day**  
Enjoy hands-on activities and time in the galleries. Georgia O'Keeffe Museum, 217 Johnson Street, 946-1039.

## APRIL

**1 WEDNESDAY, 8 A.M.-5:30 P.M.**

**Children's Art Space Spring Break Camp**  
See March 30 listing.

**1 WEDNESDAY, 10:30-11 A.M.**

**Books and Babies**  
Oliver La Farge Branch Library. See March 4 listing.

**1 WEDNESDAY, 10:30-11 A.M.**

**Wee Wednesday**  
Santa Fe Children's Museum. See March 4 listing.

**1 WEDNESDAY, 10:45-11:15 A.M.**

**Preschool Storytime**  
Southside Library. See March 4 listing.

# Spring 2015 Calendar – April

**1 WEDNESDAY, 1-2:30 P.M.**

**LEGO Club**  
Los Alamos Family Strengths Network. See March 4 listing.

**1 WEDNESDAY TO 30 THURSDAY, 3:30-5:30 P.M.**

**After-School Art**  
Drawing, painting and printmaking explorations offered Monday through Thursday every week. Collage and mixed media on Fridays. Children's Art Space, 1219 Luisa Street #6, 490-2119.

**1 WEDNESDAY, 5:30-7 P.M.**

**Choosing Where to Have Your Baby: Options in Childbirth**  
Info@thebirthingtree.com. See March 4 listing.

**2 THURSDAY, 8 A.M.-5:30 P.M.**  
**Children's Art Space Spring Break Camp**

See March 30 listing.

**2 THURSDAY, 10:45-11:15 A.M.**

**Books and Babies**  
Southside Library. See March 5 listing.

**2 THURSDAY, 10:45-11:30 A.M.**

**Children's Story Hour**  
Collected Works Bookstore. See March 5 listing.

**2 THURSDAY, 11-11:45 A.M.**

**Firefighter Storytime**  
Santa Fe Children's Museum. See March 5 listing.

**2 THURSDAY, 4-6:30 P.M.**

**Thursdays are Yoursdays!**  
Santa Fe Children's Museum. See March 5 listing.

**2 THURSDAY, 4:30-5:30 P.M.**

**The Cornelius Hour**  
Santa Fe Children's Museum. See March 5 listing.

**2 THURSDAY, 5-7 P.M.**

**Break Dancing Classes**  
Warehouse 21. See March 5 listing.

**2 THURSDAY, 6 P.M.**

**Pajama Tales from the Book Nook**  
Santa Fe Children's Museum. See March 5 listing.

**3 FRIDAY, 8 A.M.-5:30 P.M.**

**Children's Art Space Spring Break Camp**  
See March 30 listing.

**3 FRIDAY, 11-11:45 A.M.**

**Preschool Storytime**  
Main Library. See March 6 listing.

**3 FRIDAY, 2:30-4:30 P.M.**

**Open Art Studio**  
Santa Fe Children's Museum. See March 6 listing.

**3 FRIDAY, 4:30-6:30 P.M.**

**First Friday**  
Georgia O'Keeffe Museum. See March 6 listing.

**3 FRIDAY, 5 P.M.**

**Friday Family Fun Night**  
A time to relax and enjoy families and friends, special invitation to those affected by ASD. Holy Family Episcopal Church, 10 A Bisbee Court, 424-0095.

**3 FRIDAY, 5-8 P.M.**

**First Fridays**  
New Mexico Museum of Art. See March 6 listing.

**4 SUNDAY, NOON.-5 P.M.**

**A Year of Celebrations: Happy Birthday Ole Kirk Christiansen, LEGO Inventor!**  
All day activities including painting and building with LEGOs. Featuring a team build with museum educators to construct a large LEGO house. Santa Fe Children's Museum, 1050 Old Pecos Trail, 989-8359.

**4 SATURDAY, 1-4 P.M.**

**Newborn Care Class**  
Info@thebirthingtree.com. See March 22 listing.

**5 SUNDAY, 8 A.M.-5 P.M.**

**First Sundays!**  
New Mexico Museum of Natural History. See March 1 listing.

**5 SUNDAY, 9:30-11 A.M.**

**Russian Language and Math Group**  
Los Alamos Family Strengths Network. See March 1 listing.

**5 SUNDAY, 9:30-11:30 A.M.**

**Easter Enrichment**  
Watch the primates and cats enjoy extra-special enrichment activities with egg-shaped cereal bars, frozen treats, painted boxes, dyed hard-boiled eggs and more. ABQ BioPark Zoo, 903 Tenth Street, Albuquerque, (505) 764-6214.

**6 MONDAY, 9-11 A.M.**

**Toddler Time**  
Explora!, Albuquerque. See March 2 listing.

**6 MONDAY, 6:30-7:30 P.M.**

**Family Story Time**  
Oliver La Farge Branch Library. See March 2 listing.

**6 MONDAY, 6:30-8 P.M.**

**Birth Talk Los Alamos**  
Los Alamos Family Strengths Network. See March 2 listing.

**7 TUESDAY**

**Wags and Words**  
Vista Grande Public Library. See March 3 listing.

**7 TUESDAY, 9:30-10:15 A.M.**

**Family Yoga**  
Los Alamos Family Strengths Network. See March 3 listing.

**7 TUESDAY, 10:30-11 A.M.**

**Books and Babies**  
Main Library. See March 3 listing.

**7 TUESDAY, 10:30-11:15 A.M.**

**Preschool Storytime**  
Oliver La Farge Branch Library. See March 3 listing.

**7 TUESDAY, 10:30-11:30 A.M.**

**Introduction to Essential Oils**  
Info@thebirthingtree.com. See March 6 listing.

**7 TUESDAY, 10:30 A.M.-12:30 P.M.**

**Chit Chat and Change Diapers**  
Los Alamos Family Strengths Network. See March 3 listing.

**8 WEDNESDAY**

**Wags and Words**  
Vista Grande Public Library. See March 3 listing.

**8 WEDNESDAY, 10:30-11 A.M.**

**Books and Babies**  
Oliver La Farge Branch Library. See March 4 listing.

**8 WEDNESDAY, 10:30-11 A.M.**

**Wee Wednesday**  
Santa Fe Children's Museum. See March 4 listing.

**8 WEDNESDAY, 10:45-11:15 A.M.**

**Preschool Storytime**  
Southside Library. See March 4 listing.

**8 WEDNESDAY, 1-2:30 P.M.**

**LEGO Club**  
Los Alamos Family Strengths Network. See March 4 listing.

**8 WEDNESDAY, 3-4:30 P.M.**

**After-School Reading Club**  
Vista Grande Public Library. See March 4 listing.

**9 THURSDAY, 10:45-11:15 A.M.**

**Books and Babies**  
Southside Library. See March 5 listing.

**9 THURSDAY, 10:45-11:30 A.M.**

**Children's Story Hour**  
Collected Works Bookstore. See March 5 listing.

**9 THURSDAY, 1 P.M.**

**La Leche League**  
Indigo Baby. See March 12 listing.

**9 THURSDAY, 4-6:30 P.M.**

**Thursdays are Yoursdays!**  
Santa Fe Children's Museum. See March 5 listing.

**9 THURSDAY, 4:30-5:30 P.M.**

**The Cornelius Hour**  
Santa Fe Children's Museum. See March 5 listing.

**9 THURSDAY, 5-7 P.M.**

**Break Dancing Classes**  
Warehouse 21. See March 5 listing.

**9 THURSDAY, 6 P.M.**

**Pajama Tales from the Book Nook**  
Santa Fe Children's Museum. See March 5 listing.

**10 FRIDAY THROUGH 13 MONDAY (TIMES TO BE ANNOUNCED)**

**Magic Show Francis Menotti**  
Enjoy 15-year magic veteran Francis as he dazzles the crowd. Call or check website for showtimes. Jean Cocteau Cinema, 418 Montezuma Avenue, 466-5528, www.jeancocteaucinema.com.

**10 FRIDAY, 10-10:45 A.M.**

**Family Belly Dancing**  
Los Alamos Family Strengths Network. See March 13 listing.

**10 FRIDAY, 11-11:45 A.M.**

**Preschool Storytime**  
Main Library. See March 6 listing.



**MARCH 30TH-APRIL 3RD**



**Animals Alive!!**  
Spring Break Camp  
for Grades K-3!

**ARTbarn Community Studio**  
**March 30th-April 3rd 8:00-Noon**

Come join us as we explore the world of our furry, scaly, leathery, feathery friends. This is a great opportunity to let campers' imaginations soar. We will use many different mediums to create innovative and fun animal art! \$200 camp fee includes all art materials, as well as snacks. Scholarships available! To register please visit [artsmartnm.org](http://artsmartnm.org) or in person at the ARTbarn 1516 Pacheco St. Space is limited.

For more information contact Amanda Neiter:  
[ANEITER@ARTSMARTNM.ORG](mailto:ANEITER@ARTSMARTNM.ORG) 505-992-2787

# Spring 2015 Calendar – April

**10 FRIDAY, 11 A.M.-NOON**

**Story Time**  
Vista Grande Public Library. See March 6 listing.

**10 FRIDAY, 2:30-4:30 P.M.**

**Open Art Studio**  
Santa Fe Children's Museum. See March 6 listing.

**10 FRIDAY, 4-5 P.M.**

**Teatro Paraguas**  
Bilingual theater for children. Oliver La Farge Branch Library, 1730 Llano Street, 955-4863.

**10 FRIDAY, 6:30-10:30 P.M.**

**11th Annual Youth Music Night**  
Youth entertainment, art activities and free food. Free admission to music and art events, and all museum galleries. Museum of International Folk Art, 706 Camino Lejo, 476-1200.

**10 FRIDAY, 7 P.M.**

**Family Movie Night**  
Vista Grande Public Library. See March 13 listing.

**11 SATURDAY TO 25 SATURDAY**

**"Can"struction Santa Fe**  
Vote for your favorite sculptures designed completely from canned food at Santa Fe Place, sponsored by the Santa Fe Chapter of American Institute of Architects. All canned food used in sculptures will be donated to The Food Depot. Sculptures on display through April 25. Santa Fe Place Mall, 4250 Cerrillos Road.

**11 SATURDAY, 8 A.M.-5 P.M.**

**Art Camps**  
Children's Art Space. See March 30 listing.

**11 SATURDAY, 11 A.M.-NOON**

**Teatro Paraguas**  
Bilingual theater for children. Main Library, 145 Washington Avenue, 955-6783.

**11 SATURDAY, 1-3 P.M.**

**Prehistoric Preschool**  
Moon, Planets, Stars: Night Sky Discovery. Notice what you see and discover why it happens. Ages 3 to 5. New Mexico Museum of Natural History, 1801 Mountain Road, Albuquerque, (505) 841-2800.

**11 SATURDAY, 1-4 P.M.**

**Reading Tune-Ups**  
Offered by Floy Gregg. See March 7 listing.

**11 SATURDAY, 2:30-3:30 P.M.**

**Teatro Paraguas**  
Bilingual theatre for children. Southside Library, 6599 Jaguar Drive, 955-4863.

**12 SUNDAY, 9:30-11 A.M.**

**Russian Language and Math Group**  
Los Alamos Family Strengths Network. See March 1 listing.

**13 MONDAY, 9-11 A.M.**

**Toddler Time**  
Explora!, Albuquerque. See March 2 listing.

**13 MONDAY, 3:30-5:30 P.M.**

**After-School Art**  
Children's Art Space. See March 2 listing.

**14 TUESDAY**

**Wags and Words**  
Vista Grande Public Library. See March 3 listing.

**14 TUESDAY, 7 A.M.-5 P.M.**

**Fishing Derby**  
Cast your line to see what you can catch at Tingley Beach during the Free Fishing Derby! Tingley Beach, 1800 Tingley Drive SW, Albuquerque, (505) 768-2000.

**14 TUESDAY, 9:30-10:15 A.M.**

**Family Yoga**  
Los Alamos Family Strengths Network. See March 3 listing.

**14 TUESDAY, 10:30-11 A.M.**

**Books and Babies**  
Main Library. See March 3 listing.

**14 TUESDAY, 10:30-11:15 A.M.**

**Preschool Storytime**  
Oliver La Farge Branch Library. See March 3 listing.

**14 TUESDAY, 10:30 A.M.-NOON**

**Breastfeeding Support Circle**  
The Birthing Tree. See March 10 listing.

**14 TUESDAY, 10:30 A.M.-12:30 P.M.**

**Chit Chat and Change Diapers**  
Los Alamos Family Strengths Network. See March 3 listing.

**14 TUESDAY, 3:30-4:30 P.M.**

**School Age Craft**  
Oliver La Farge Branch Library. See March 10 listing.

**14 TUESDAY, 3:30-4:30 P.M.**

**School Age Craft**  
Southside Library. See March 10 listing.

**15 WEDNESDAY**

**Wags and Words**  
Vista Grande Public Library. See March 3 listing.

**15 WEDNESDAY, 10:30-11 A.M.**

**Books and Babies**  
Oliver La Farge Branch Library. See March 4 listing.

**15 WEDNESDAY, 10:30-11 A.M.**

**Wee Wednesday**  
Santa Fe Children's Museum. See March 4 listing.

**15 WEDNESDAY, 10:45-11:15 A.M.**

**Preschool Storytime**  
Southside Library. See March 4 listing.

**15 WEDNESDAY, 1-2:30 P.M.**

**LEGO Club**  
Los Alamos Family Strengths Network. See March 4 listing.

**15 WEDNESDAY, 3-4:30 P.M.**

**After-School Reading Club**  
Vista Grande Public Library. See March 4 listing.

**15 WEDNESDAY, 3:30-4:30 P.M.**

**School Age Craft**  
Main Library. See March 11 listing.

**16 THURSDAY, 8 A.M.-5 P.M.**

**Art Camps**  
Children's Art Space. See March 30 listing.

**16 THURSDAY, 10 A.M. AND 11 A.M.**

**Growing Up Montessori School's Tour Morning**  
Growing Up Montessori School. See March 19 listing.

**16 THURSDAY, 10:45-11:15 A.M.**

**Books and Babies**  
Southside Library. See March 5 listing.

**16 THURSDAY, 10:45-11:30 A.M.**

**Children's Story Hour**  
Collected Works Bookstore. See March 5 listing.

**16 THURSDAY, 4-6:30 P.M.**

**Thursdays are Yoursdays!**  
Santa Fe Children's Museum. See March 5 listing.

**16 THURSDAY, 4:30-5:30 P.M.**

**The Cornelius Hour**  
Santa Fe Children's Museum. See March 5 listing.

**16 THURSDAY, 5-7 P.M.**

**Break Dancing Classes**  
Warehouse 21. See March 5 listing.

**16 THURSDAY, 6 P.M.**

**Pajama Tales from the Book Nook**  
Santa Fe Children's Museum. See March 5 listing.

**16 THURSDAY, 7 P.M.**

**Youth x Youth Fest 2015**  
A collaboration of Warehouse 21, Boys and Girls Club, Youth Media Project and Story of Place Convergence. Sponsored by City of Santa Fe Teen Night Program. Warehouse 21, 1614 Paseo de Peralta, 989-4423.

**17 FRIDAY, 11-11:45 A.M.**

**Preschool Storytime**  
Main Library. See March 6 listing.

**17 FRIDAY, 11 A.M.-NOON**

**Story Time**  
Vista Grande Public Library. See March 6 listing.

**17 FRIDAY, 2:30-4:30 P.M.**

**Open Art Studio**  
Santa Fe Children's Museum. See March 6 listing.

**17 FRIDAY, 6:30 P.M.**

**Aquarium Overnight**  
ABQ BioPark Aquarium. See March 20 listing.

**17 FRIDAY, 6:30 P.M.**

**Autism Society Santa Fe Group Meeting**  
Holy Family Episcopal Church. See March 20 listing.

**17 FRIDAY, 7 P.M.**

**Youth x Youth Fest 2015**  
Warehouse 21. See April 16 listing.

**18 SATURDAY**

**Registration begins for Youth Summer Basketball League 2015.**  
Genoveva Chavez Center, 3221 Rodeo Road, (505)-955-4000.

**18 SATURDAY, 10:30 A.M.-12:30 P.M.**

**Early Childhood Open House**  
Visit Santa Fe Waldorf School to find out more about Pre-K and kindergarten classes. Talk with teachers and learn about the uniquely integrated curriculum. RSVP 467-6431. Santa Fe Waldorf School, 26 Puesta Del Sol.

**18 SATURDAY, 1-4 P.M.**

**Mom's Emotional Well Being: Therapeutic Support Group**  
Info@thebirthingtree.com. See March 21 listing.

**18 SATURDAY, 1-4 P.M.**

**Reading Tune-Ups**  
Offered by Floy Gregg. See March 7 listing.

**18 SATURDAY, 5 P.M.**

**Unimagined Bridges**  
Explore the music of Bach, Brahms, as well as Kevin Puts' Arches. Tickets \$22, children 16 and under \$12. Harwood Museum of Art, 238 Ledoux Street, Taos, (575) 758-9826.

**18 SATURDAY, 7 P.M.**

**Youth x Youth Fest 2015**  
Warehouse 21. See April 16 listing.

**19 SUNDAY, 9:30-11 A.M.**

**Russian Language and Math Group**  
Los Alamos Family Strengths Network. See March 1 listing.

**19 SUNDAY, 5 P.M.**

**Unimagined Bridges**  
Harwood Museum of Art, Taos. See April 18 listing.

**20 MONDAY, 9-11 A.M.**

**Toddler Time**  
Explora!, Albuquerque. See March 2 listing.

**20 MONDAY, 3:30-5:30 P.M.**

**After-School Art**  
Children's Art Space. See March 2 listing.

## Gentle Shepherd Preschool



Pre-Kindergarten Program  
(ages 3-5)

7:30AM - 12:30PM

M/W/F Classes

T/Th Classes

Highlights:

Art • Stories • Music  
• Creative Play  
Field Trips • Christian Environment

**505-983-9838**

209 East Barcelona Road  
Santa Fe, NM 87505



# Spring 2015 Calendar – April



"The Peaceful World," by Luke Tompson, age 12

**20 MONDAY, 6-7 P.M.**

**Autism Support Group**

Los Alamos Family Strengths Network. See March 16 listing.

**20 MONDAY, 7 P.M.**

**Jazz Documentary**

Warehouse 21. See March 23 listing.

**21 TUESDAY**

**Wags and Words**

Vista Grande Public Library. See March 3 listing.

**21 TUESDAY, 8 A.M.-5 P.M.**

**Art Camps**

Children's Art Space. See March 30 listing.

**21 TUESDAY, 8:30-10:30 A.M.**

**Open House**

Santa Fe Waldorf School invites parents and visitors to see classrooms. Reserve your space, Brent, 467-6431. Santa Fe Waldorf School, 26 Puesta Del Sol.

**21 TUESDAY, 9:30-10:15 A.M.**

**Family Yoga**

Los Alamos Family Strengths Network. See March 3 listing.

**21 TUESDAY, 10:30-11 A.M.**

**Books and Babies**

Main Library. See March 3 listing.

**21 TUESDAY, 10:30-11:15 A.M.**

**Preschool Storytime**

Oliver La Farge Branch Library. See March 3 listing.

**21 TUESDAY, 10:30 A.M.-NOON**

**Essential Oils for Pregnancy, Birth and Postpartum**

Info@thebirthingtree.com. See March 17 listing.

**21 TUESDAY, 10:30 A.M.-12:30 P.M.**

**Chit Chat and Change Diapers**

Los Alamos Family Strengths Network. See March 3 listing.

**21 TUESDAY, 3:30-4:30 P.M.**

**Science After School**

Oliver La Farge Branch Library. See March 17 listing.

**21 TUESDAY, 3:30-4:30 P.M.**

**Science After School**

Southside Library. See March 17 listing.

**22 WEDNESDAY**

**Wags and Words**

Vista Grande Public Library. See March 3 listing.

**22 WEDNESDAY, 10:30-11 A.M.**

**Books and Babies**

Oliver La Farge Branch Library. See March 4 listing.

**22 WEDNESDAY, 10:30-11 A.M.**

**Wee Wednesday**

Santa Fe Children's Museum. See March 4 listing.

**22 WEDNESDAY, 10:45-11:15 A.M.**

**Preschool Storytime**

Southside Library. See March 4 listing.

**22 WEDNESDAY, 1-2:30 P.M.**

**LEGO Club**

Los Alamos Family Strengths Network. See March 4 listing.

**22 WEDNESDAY, 3-4:30 P.M.**

**After-School Reading Club**

Vista Grande Public Library. See March 4 listing.

**22 WEDNESDAY, 3:30-4:30 P.M.**

**Science After School**

Main Library. See March 18 listing.

**23 THURSDAY, 10:45-11:15 A.M.**

**Books and Babies**

Southside Library. See March 5 listing.

**23 THURSDAY, 10:45-11:30 A.M.**

**Children's Story Hour**

Collected Works Bookstore. See March 5 listing.

**23 THURSDAY, 4-6:30 P.M.**

**Thursdays are Yoursdays!**

Santa Fe Children's Museum. See March 5 listing.

**23 THURSDAY, 4:30-5:30 P.M.**

**The Cornelius Hour**

Santa Fe Children's Museum. See March 5 listing.

**23 THURSDAY, 5-7 P.M.**

**Break Dancing Classes**

Warehouse 21. See March 5 listing.

**23 THURSDAY, 6 P.M.**

**Pajama Tales from the Book Nook**

Santa Fe Children's Museum. See March 5 listing.

**24 FRIDAY, 10-10:45 A.M.**

**Family Belly Dancing**

Los Alamos Family Strengths Network. See March 13 listing.

**24 FRIDAY, 10:30 A.M.-4:30 P.M.**

**A Year of Celebrations: Arbor Day**

All-day scavenger hunt. Join Mollie from the Santa Fe Botanical Gardens and plant fruit trees in our Earthworks garden from 10:30-11:30 a.m. Open Art Studio from 2:30pm - 4:30 p.m.

**24 FRIDAY, 11-11:45 A.M.**

**Preschool Storytime**

Main Library. See March 6 listing.

**24 FRIDAY, 11 A.M.-NOON**

**Story Time**

Vista Grande Public Library. See March 6 listing.

**24 FRIDAY, 2:30-4:30 P.M.**

**Open Art Studio**

Santa Fe Children's Museum. See March 6 listing.

**25 SATURDAY, 1-3 P.M.**

**Prehistoric Preschool**

Clouds and Sun: Day Sky Discoveries. Notice what you see and discover why it happens. Ages 3 to 5. New Mexico Museum of Natural History, 1801 Mountain Road, Albuquerque, (505) 841-2800.

**25 SATURDAY, 2:30-4:30 P.M.**

**Family Movie Matinee**

Family-oriented movies with light refreshments. Southside Library, 6599 Jaguar Drive, 955-4863.

**25 SATURDAY, 3-4 P.M.**

**Elementary Strings Concert**

Students from the Santa Fe Youth Symphony Association's after-school strings program perform in semi-annual performance. Tickets \$5-\$10. Byran Fant Auditorium at Capital High School, 4851 Paseo del Sol, 672-5565 x101.

**25 SATURDAY, 6-8 P.M.**

**Mariachi Concert**

Students from the Santa Fe Youth Symphony Association's Mariachi programs perform Mariachi favorites. Tickets \$5-\$10. Byran Fant Auditorium at Capital High School, 4851 Paseo del Sol, 672-5565 x101.

**26 SUNDAY, 9:30-11 A.M.**

**Russian Language and Math Group**

Los Alamos Family Strengths Network. See March 1 listing.

**27 MONDAY, 9-11 A.M.**

**Toddler Time**

Explora!, Albuquerque. See March 2 listing.

**27 MONDAY, 10-11:30 A.M.**

**Homeschool Art**

Homeschool families are invited to explore the Harwood's diverse collection and create art of their own. Designed for ages 4 to 12, with parent. All ages welcome. Harwood Museum of Art, 238 Ledoux Street, Taos, (575) 758-9826.

**27 MONDAY, 3:30-5:30 P.M.**

**After-School Art**

Children's Art Space. See March 2 listing.

**28 TUESDAY**

**Wags and Words**

Vista Grande Public Library. See March 3 listing.

**28 TUESDAY, 8 A.M.-5 P.M.**

**Art Camps**

Children's Art Space. See March 30 listing.

*"Wee Spirit"*  
**Nursery**

**Joan Kennedy  
Waldorf Teacher**

An Early Childhood  
Program for 3-5 year olds  
since 1984

- \* Home/school setting
- \* 12 children, 2 teachers
- \* School year & summer session
- \* Tuesday, Wednesday, Thursday  
8:30 a.m. - 12:30 p.m.
- \* After-care to 2:30 p.m.

You are warmly  
invited to call and  
come for a visit.

**471-8932**

# Spring 2015 Calendar – April/May

**28 TUESDAY, 9:30-10:15 A.M.**

**Family Yoga**

Los Alamos Family Strengths Network. See March 3 listing.

**28 TUESDAY, 10:30-11 A.M.**

**Books and Babies**

Main Library. See March 3 listing.

**28 TUESDAY, 10:30-11:15 A.M.**

**Preschool Storytime**

Oliver La Farge Branch Library. See March 3 listing.

**28 TUESDAY, 10:30 A.M.-NOON**

**Breastfeeding Support Circle**

See March 10 listing.

**28 TUESDAY, 10:30 A.M.-12:30 P.M.**

**Chit Chat and Change Diapers**

Los Alamos Family Strengths Network. See March 3 listing.

**28 TUESDAY, 5:30-8 P.M.**

**Orchestras Concert**

Students from the Santa Fe Youth Symphony Association's Youth Symphony, Philharmonia, Intermezzo and Elementary Strings Orchestra music programs perform in this end of semester event. Tickets \$5-\$10. St. Francis Auditorium, 107 West Palace Avenue, 672-5565 x101.

**29 WEDNESDAY**

**Wags and Words**

Vista Grande Public Library. See March 3 listing.

**29 WEDNESDAY, 10:30-11 A.M.**

**Books and Babies**

Oliver La Farge Branch Library. See March 4 listing.

**29 WEDNESDAY, 10:30-11 A.M.**

**Wee Wednesday**

Santa Fe Children's Museum. See March 4 listing.

**29 WEDNESDAY, 10:45-11:15 A.M.**

**Preschool Storytime**

Southside Library. See March 4 listing.



"The Hug," by Canek Rueda, age 13

**29 WEDNESDAY, 1-2:30 P.M.**

**LEGO Club**

Los Alamos Family Strengths Network. See March 4 listing.

**29 WEDNESDAY, 3-4:30 P.M.**

**After-School Reading Club**

Vista Grande Public Library. See March 4 listing.

**30 THURSDAY, 10:45-11:15 A.M.**

**Books and Babies**

Southside Library. See March 5 listing.

**30 THURSDAY, 10:45-11:30 A.M.**

**Children's Story Hour**

Collected Works Bookstore. See March 5 listing.

**30 THURSDAY, 4-6:30 P.M.**

**Thursdays are Yoursdays!**

Santa Fe Children's Museum. See March 5 listing.

**30 THURSDAY, 4:30-5:30 P.M.**

**The Cornelius Hour**

Santa Fe Children's Museum. See March 5 listing.

**30 THURSDAY, 5-7 P.M.**

**Break Dancing Classes**

Warehouse 21. See March 5 listing.

**30 THURSDAY, 6 P.M.**

**Pajama Tales from the Book Nook**

Santa Fe Children's Museum. See March 5 listing.

## MAY

**1 FRIDAY, 11-11:45 A.M.**

**Preschool Storytime**

Main Library. See March 6 listing.

**1 FRIDAY, 11 A.M.-NOON**

**Story Time**

Vista Grande Public Library. See March 6 listing.

**1 FRIDAY, 2:30-4:30 P.M.**

**Open Art Studio**

Santa Fe Children's Museum. See March 6 listing.

**1 FRIDAY, 4:30-6:30 P.M.**

**First Friday**

Georgia O'Keeffe Museum. See March 6 listing.

**1 FRIDAY TO 29 FRIDAY, 3:30-5:30 P.M.**

**After-School Art**

Drawing, painting and printmaking explorations offered Monday through Thursday every week. Collage and mixed media on Fridays. Children's Art Space, 1219 Luisa Street #6, 490-2119.

**1 FRIDAY, 5-8 P.M.**

**First Fridays**

New Mexico Museum of Art. See March 6 listing.

**1 FRIDAY, 7 P.M.**

**Circus of Lost Dreams**

Topsy turvy dream land where clowns, aerialists and acrobats will ignite the imagination and awaken the senses. Performed by Wise Fool's up-and-coming youth performers. James A. Little Theater, 1060 Cerrillos Road, 476-6300.

**1 FRIDAY, 7 P.M.**

**Coyote Steals the Stars**

After-school theater arts students from Teatro Paraguas Children's Theater showcase their work. For reservations and more information call 471-3140.

**2 SATURDAY, 10 A.M.-3 P.M.**

**Fiesta Para Bebes: Celebrating the First Five Years of Life**

Community fair with information about services for families with young children. Raffle, entertainment and health information for the entire family. Sweeney Elementary School, 501 Airport Road, 988-9715.

**Mother Nature Center**  
Nurturing Community, Family and Children

infant and childcare drop-ins extended hours/weekends summer programs

Phone: 505.699.0879 1616 Camino La Canada Santa Fe, New Mexico  
[mothernaturecenter.org](http://mothernaturecenter.org)

**GCCC YOUTH PROGRAMS**

Kids Need a Place to Go, Come to the Chavez Center

**SPRING BREAK**  
.....DAY CAMPS

March 30-April 3

**Basketball Half Day \$55**  
**Full Day Camp \$135**  
M-Th: 7:30 am - 5:30 pm &  
Fri: 7:30 am - 1:00 pm  
**Combo Camp \$155**

♦ Basketball ♦ Skating ♦ Swimming ♦ Arts & Crafts  
and a whole lot of FUN!

Genoveva Chavez  
COMMUNITY CENTER  
3221 Rodeo Rd.  
[www.chavezcenter.com](http://www.chavezcenter.com)

Call Melissa at 955-4005  
or Tiedra at 955-4014



# Spring 2015 Calendar – May

**2 SATURDAY, 10 A.M.-4 P.M.**

**Battlefields New Mexico: The Civil War and More**

Experience military drills, camp life, lectures, demonstrations and reenactments of Civil War battles fought in New Mexico. El Rancho de las Golondrinas, 334 Los Pinos Road, 471-2261.

**2 SATURDAY, 2 P.M.**

**Coyote Steals the Stars**

Teatro Paraguas Children's Theater showcase. See May 1 listing.

**2 SATURDAY, 2 P.M. AND 7 P.M.**

**Circus of Lost Dreams**

James A. Little Theater. See May 1 listing.

**3 SUNDAY, 8 A.M.-5 P.M.**

**First Sundays!**

New Mexico Museum of Natural History. See March 1 listing.

**3 SUNDAY, 9:30-11 A.M.**

**Russian Language and Math Group**

Los Alamos Family Strengths Network. See March 1 listing.

**3 SUNDAY, 10 A.M.-4 P.M.**

**Battlefields New Mexico: The Civil War and More**

El Rancho de las Golondrinas. See May 2 listing.

**4 MONDAY, 9-11 A.M.**

**Toddler Time**

Explora!, Albuquerque. See March 2 listing.

**4 MONDAY, 3:30-5:30 P.M.**

**After-School Art**

Children's Art Space. See March 2 listing.

**4 MONDAY, 6:30-8 P.M.**

**Birth Talk Los Alamos**

Los Alamos Family Strengths Network. See March 2 listing.

**5 TUESDAY**

**Wags and Words**

Vista Grande Public Library. See March 3 listing.



"Shadows," by Sebastian Joseph O'Leary Lopez, age 12

**5 TUESDAY, 9:30-10:15 A.M.**

**Family Yoga**

Los Alamos Family Strengths Network. See March 3 listing.

**5 TUESDAY, 10:30-11 A.M.**

**Books and Babies**

Main Library. See March 3 listing.

**5 TUESDAY, 10:30-11:30 A.M.**

**Introduction to Essential Oils**

Info@thebirthingtree.com. See March 6 listing.

**5 TUESDAY, 10:30 A.M.-12:30 P.M.**

**Chit Chat and Change Diapers**

Los Alamos Family Strengths Network. See March 3 listing.

**6 WEDNESDAY**

**Wags and Words**

Vista Grande Public Library. See March 3 listing.

**6 WEDNESDAY, 10:30-11 A.M.**

**Books and Babies**

Oliver La Farge Branch Library. See March 4 listing.

**6 WEDNESDAY, 10:30-11 A.M.**

**Wee Wednesday**

Santa Fe Children's Museum. See March 4 listing.

**6 WEDNESDAY, 1-2:30 P.M.**

**LEGO Club**

Los Alamos Family Strengths Network. See March 4 listing.

**6 WEDNESDAY, 5:30-7 P.M.**

**Choosing Where to Have Your Baby: Options in Childbirth**

Info@thebirthingtree.com. See March 4 listing.

**7 THURSDAY, 10 AND 11 A.M.**

**Growing Up Montessori School's Tour Morning**

Growing Up Montessori School. See March 19 listing.

**7 THURSDAY, 10:45-11:15 A.M.**

**Books and Babies**

Southside Library. See March 5 listing.

**7 THURSDAY, 10:45-11:30 A.M.**

**Children's Story Hour**

Collected Works Bookstore. See March 5 listing.

**7 THURSDAY, 11-11:45 A.M.**

**Firefighter Storytime**

Santa Fe Children's Museum. See March 5 listing.

**7 THURSDAY, 4-6:30 P.M.**

**Thursdays are Yoursdays!**

Santa Fe Children's Museum. See March 5 listing.

**7 THURSDAY, 4:30-5:30 P.M.**

**The Cornelius Hour**

Santa Fe Children's Museum. See March 5 listing.

**7 THURSDAY, 5-7 P.M.**

**Break Dancing Classes**

Warehouse 21. See March 5 listing.

**7 THURSDAY, 6 P.M.**

**Pajama Tales from the Book Nook**

Santa Fe Children's Museum. See March 5 listing.

**8 FRIDAY, 10-10:45 A.M.**

**Family Belly Dancing**


Los Alamos Family Strengths Network. See March 13 listing.

**8 FRIDAY, 2:30-4:30 P.M.**

**Open Art Studio**


Santa Fe Children's Museum. See March 6 listing.

## CAMINO DE PAZ SCHOOL



*"I have a better understanding of economics, the environment and how my learning makes a difference."*

- Orlando



Accepting applications for grades 7 and 8

OPEN HOUSE : SUNDAY, MARCH 1st, 2 p.m.

MONTESSORI MIDDLE SCHOOL

Grades 7, 8 & 9    505-231-2819    www.caminodepaz.net

Student pick-up and drop off from De Vargas Mall

*An education worth the ride!*

## Family Purim & Passover Celebration!

PURIM IN THE WILD WEST!

MARCH 5, 5:00PM

Multimedia Megilah Reading! • Wild West Menu!

- Entertainment! • Hamentashen! • Masquerade!
- Live Music by Rumelia Klezmer band!

FAMILY PASSOVER SEDER!

APRIL 3, 6:45PM

Relive the exodus with a traditional Passover Seder!

Give your child the gift they deserve!

CHABAD HEBREW SCHOOL

The hand-on joys of Judaism they will cherish a lifetime!

AGES 4-12 • SUNDAYS, 10:00-12:30

505-983-2000  
CHABADSANTAFE.COM  
DL@CHABADSANTAFE.COM



# Spring 2015 Calendar – May

**8 FRIDAY, 7 P.M.**

**Family Movie Night**

Vista Grande Public Library. See March 13 listing.

**8 FRIDAY, 7 P.M.**

**Mary Poppins**

Pandemonium Productions presents Disney's family favorite, complete with all the songs from the film. Call for ticket information, 982-3327. James A. Little Theater, 1060 Cerrillos Road.

**9 SATURDAY, 11 A.M.-2 P.M.**

**Paw Pageant Dog Show**

The Santa Fe Youth Symphony's annual dog show invites all family dogs to participate for prizes. Event features pet food and store vendors, face-painting and giveaways. Register online at [sfysa.org/dog-show](http://sfysa.org/dog-show). Railyard park, 740 Cerrillos Road, 672-5565 x 101 or email [sfysainfo@gmail.com](mailto:sfysainfo@gmail.com) for more information.

**9 SATURDAY, 1-3 P.M.**

**Prehistoric Preschool**

Satellites and Asteroids: Exploring New Worlds. Notice what you see and discover why it happens. Ages 3 to 5. New Mexico Museum of Natural History, 1801 Mountain Road, Albuquerque, (505) 841-2800.

**9 SATURDAY, 7 P.M.**

**Mary Poppins**

James A. Little Theater. See May 8 listing.

**10 SUNDAY, 9:30-11 A.M.**

**Russian Language and Math Group**

Los Alamos Family Strengths Network. See March 1 listing.

**10 SUNDAY NOON-5 P.M.**

**A Year of Celebrations: Mother's Day**

Save the date, but check the museum's online calendar for details: [santafechildrensmuseum.org/calendar](http://santafechildrensmuseum.org/calendar). Santa Fe Children's Museum, 1050 Old Pecos Trail, 989-8359.

**10 SUNDAY, 2 P.M.**

**Mary Poppins**

James A. Little Theater. See May 8 listing.

**11 MONDAY, 9-11 A.M.**

**Toddler Time**

Explora!, Albuquerque. See March 2 listing.

**11 MONDAY, 3:30-5:30 P.M.**

**After-School Art**

Children's Art Space. See March 2 listing.



"The Earth at Your Fingertips," by Esme Heller, age 12

**11 MONDAY, 7:30 P.M.**

**Academy of St. Martin in the Fields**

English chamber ensemble performs works by Brahms, Shostakovich and Mendelssohn. Call for tickets. Lencic Performing Arts Center, 211 West San Francisco Street, 988-1234.

**12 TUESDAY**

**Wags and Words**

Vista Grande Public Library. See March 3 listing.

**12 TUESDAY, 8:30-10:30 A.M.**

**Open House**

Santa Fe Waldorf School invites parents and visitors to visit classrooms. Reserve your space, Brent, 467-6431. Santa Fe Waldorf School, 26 Puesta Del Sol.

**12 TUESDAY, 9:30-10:15 A.M.**

**Family Yoga**

Los Alamos Family Strengths Network. See March 3 listing.

**12 TUESDAY, 10:30-11 A.M.**

**Books and Babies**

Main Library. See March 3 listing.

**12 TUESDAY, 10:30 A.M.-NOON**

**Breastfeeding Support Circle**

The Birthing Tree. See March 10 listing.

**12 TUESDAY, 10:30 A.M.-12:30 P.M.**

**Chit Chat and Change Diapers**

Los Alamos Family Strengths Network. See March 3 listing.

**13 WEDNESDAY**

**Wags and Words**

Vista Grande Public Library. See March 3 listing.

**13 WEDNESDAY, 10:30-11 A.M.**

**Books and Babies**

Oliver La Farge Branch Library. See March 4 listing.

**13 WEDNESDAY, 10:30-11 A.M.**

**Wee Wednesday**

Santa Fe Children's Museum. See March 4 listing.

**13 WEDNESDAY, 1-2:30 P.M.**

**LEGO Club**

Los Alamos Family Strengths Network. See March 4 listing.

**14 THURSDAY, 10:45-11:15 A.M.**

**Books and Babies**

Southside Library. See March 5 listing.

**14 THURSDAY, 10:45-11:30 A.M.**

**Children's Story Hour**

Collected Works Bookstore. See March 5 listing.

**P 14 THURSDAY, 1 P.M.**

**La Leche League**

Indigo Baby. See March 12 listing.

**14 THURSDAY, 4-6:30 P.M.**

**Thursdays are Yoursdays!**

Santa Fe Children's Museum. See March 5 listing.

**14 THURSDAY, 4:30-5:30 P.M.**

**The Cornelius Hour**

Santa Fe Children's Museum. See March 5 listing.

**14 THURSDAY, 5-7 P.M.**

**Break Dancing Classes**

Warehouse 21. See March 5 listing.

**14 THURSDAY, 6 P.M.**

**Pajama Tales from the Book Nook**

Santa Fe Children's Museum. See March 5 listing.

**14 THURSDAY, 7 P.M.**

**Musical Revue Production**

Desert Academy students showcase their film works. Warehouse 21, 1614 Paseo de Peralta, 989-4423.

**15 FRIDAY, 2:30-4:30 P.M.**

**Open Art Studio**

Santa Fe Children's Museum. See March 6 listing.

**15 FRIDAY, 6:30 P.M.**

**Aquarium Overnight**

ABQ BioPark Aquarium. See March 20 listing.

**P 15 FRIDAY, 6:30 P.M.**

**Autism Society Santa Fe Group Meeting**

Holy Family Episcopal Church. See March 20 listing.

# Spring 2015 Calendar – May

**15 FRIDAY, 7 P.M.**

**Mary Poppins**  
James A. Little Theater. See May 8 listing.

**15 FRIDAY, 7 P.M.**

**Musical Revue Production**  
Warehouse 21. See March 14 listing.

**P 16 SATURDAY, 1-4 P.M.**

**Mom's Emotional Well Being:  
Therapeutic Support Group**  
Info@thebirthingtree.com. See March 21 listing.

**16 SATURDAY, 1-4 P.M.**

**Reading Tune-Ups**  
Offered by Floy Gregg. See March 7 listing.

**16 SATURDAY, 7 P.M.**

**Mary Poppins**  
James A. Little Theater. See May 8 listing.

**17 SUNDAY, 9:30-11 A.M.**

**Russian Language and Math Group**  
Los Alamos Family Strengths Network. See March 1 listing.

**17 SUNDAY, 1-4 P.M.**

**The Red That Colored the World**  
Exhibit opening day reception and hands-on activities for ages 3 to 103. Included with museum admission. Museum of International Folk Art, 706 Camino Lejo, 476-1200.

**17 SUNDAY, 2 P.M.**

**Mary Poppins**  
James A. Little Theater. See May 8 listing.

**18 MONDAY, 9-11 A.M.**

**Toddler Time**  
Explora!, Albuquerque. See March 2 listing.

**18 MONDAY, 3:30-5:30 P.M.**

**After-School Art**  
Children's Art Space. See March 2 listing.

**18 MONDAY, 6-7 P.M.**

**Autism Support Group**  
Los Alamos Family Strengths Network. See March 16 listing.

**19 TUESDAY**

**Wags and Words**  
Vista Grande Public Library. See March 3 listing.



"War and Peace," by Steven Kirby, age 14

**19 TUESDAY, 9:30-10:15 A.M.**

**Family Yoga**  
Los Alamos Family Strengths Network. See March 3 listing.

**19 TUESDAY, 10:30-11 A.M.**

**Books and Babies**  
Main Library. See March 3 listing.

**19 TUESDAY, 10:30 A.M.-NOON**  
**Essential Oils for Pregnancy, Birth and Postpartum**

Info@thebirthingtree.com. See March 17 listing.

**19 TUESDAY, 10:30 A.M.-12:30 P.M.**  
**Chit Chat and Change Diapers**

Los Alamos Family Strengths Network. See March 3 listing.

**20 WEDNESDAY**  
**Wags and Words**

Vista Grande Public Library. See March 3 listing.

**20 WEDNESDAY, 10:30-11 A.M.**

**Books and Babies**  
Oliver La Farge Branch Library. See March 4 listing.

**20 WEDNESDAY, 10:30-11 A.M.**

**Wee Wednesday**  
Santa Fe Children's Museum. See March 4 listing.

**20 WEDNESDAY, 1-2:30 P.M.**

**LEGO Club**  
Los Alamos Family Strengths Network. See March 4 listing.

**21 THURSDAY, 10:45-11:15 A.M.**

**Books and Babies**  
Southside Library. See March 5 listing.

**21 THURSDAY, 10:45-11:30 A.M.**

**Children's Story Hour**  
Collected Works Bookstore. See March 5 listing.

**21 THURSDAY, 4-6:30 P.M.**

**Thursdays are Yoursdays!**  
Santa Fe Children's Museum. See March 5 listing.

**21 THURSDAY, 4:30-5:30 P.M.**

**The Cornelius Hour**  
Santa Fe Children's Museum. See March 5 listing.

**21 THURSDAY, 5-7 P.M.**

**Break Dancing Classes**  
Warehouse 21. See March 5 listing.

**21 THURSDAY, 6 P.M.**

**Pajama Tales from the Book Nook**  
Santa Fe Children's Museum. See March 5 listing.

**22 FRIDAY**

**Registration ends for Youth Summer Basketball League 2015.**  
Genoveva Chavez Center, 3221 Rodeo Road, (505)-955-4000.

**22 FRIDAY, 10-10:45 A.M.**

**Family Belly Dancing**  
Los Alamos Family Strengths Network. See March 13 listing.

**22 FRIDAY, 2:30-4:30 P.M.**

**Open Art Studio**  
Santa Fe Children's Museum. See March 6 listing.

**23 SATURDAY, 1-4 P.M.**

**Reading Tune-Ups**  
Offered by Floy Gregg. See March 7 listing.

**24 SUNDAY, 9:30-11 A.M.**

**Russian Language and Math Group**  
Los Alamos Family Strengths Network. See March 1 listing.

**25 MONDAY, 9-11 A.M.**

**Toddler Time**  
Explora!, Albuquerque. See March 2 listing.

**25 MONDAY, 3:30-5:30 P.M.**

**After-School Art**  
Children's Art Space. See March 2 listing.

**26 TUESDAY, 9:30-10:15 A.M.**

**Family Yoga**  
Los Alamos Family Strengths Network. See March 3 listing.

**26 TUESDAY, 10:30-11 A.M.**

**Books and Babies**  
Main Library. See March 3 listing.

**26 TUESDAY, 10:30 A.M.-NOON**

**Breastfeeding Support Circle**  
The Birthing Tree. See March 10 listing.

**26 TUESDAY, 10:30 A.M.-12:30 P.M.**

**Chit Chat and Change Diapers**  
Los Alamos Family Strengths Network. See March 3 listing.

**27 WEDNESDAY, 10:30-11 A.M.**

**Books and Babies**  
Oliver La Farge Branch Library. See March 4 listing.

## JANIE CHODOSH

Writing Tutor and Coach

- 20 years teaching experience grades 5-12
- Published Author

Writing help for all ages and abilities

Janie Chodosh  
jchodosh2@yahoo.com  
660-0217

Check out summer workshops in the program directory

## DOES YOUR CHILD STRUGGLE TO READ? I WILL HELP YOU FIND THE REAL PROBLEM

*"The outstanding quality of this course surpassed our expectations and my daughter just made straight A's for the first time ever! Her confidence has soared working with Floy. No more endless tutoring!"*

— Abby, Santa Fe Mom

**My Guarantee To Parents: 2 Years Reading Improvement**

*"You have nothing to lose and your child has everything to gain."*

— Robert's Mom

**You child can be caught up before the end of Spring Semester  
Taught by Floy Gregg, veteran Developmental Reading Specialist  
Please call 570-1276 for your complimentary evaluation.**

# Spring 2015 Calendar – May/Ongoing Events

**27 WEDNESDAY, 10:30-11 A.M.**

**Wee Wednesday**

Santa Fe Children's Museum. See March 4 listing.

**27 WEDNESDAY, 1-2:30 P.M.**

**LEGO Club**

Los Alamos Family Strengths Network. See March 4 listing.

**28 THURSDAY, 10:45-11:15 A.M.**

**Books and Babies**

Southside Library. See March 5 listing.

**28 THURSDAY, 10:45-11:30 A.M.**

**Children's Story Hour**

Collected Works Bookstore. See March 5 listing.

**28 THURSDAY, 4-6:30 P.M.**

**Thursdays are Yoursdays!**

Santa Fe Children's Museum. See March 5 listing.

**28 THURSDAY, 4:30-5:30 P.M.**

**The Cornelius Hour**

Santa Fe Children's Museum. See March 5 listing.

**28 THURSDAY, 5-7 P.M.**

**Break Dancing Classes**

Warehouse 21. See March 5 listing.

**28 THURSDAY, 6 P.M.**

**Pajama Tales from the Book Nook**

Santa Fe Children's Museum. See March 5 listing.

**29 FRIDAY, 10 A.M.-5 P.M.**

**A Year of Celebrations: Name Day**

Check out the museum's anniversary calendar for more details: [santafechildrensmuseum.org/calendar](http://santafechildrensmuseum.org/calendar). Santa Fe Children's Museum, 1050 Old Pecos Trail, 989-8359.

**29 FRIDAY, 2:30-4:30 P.M.**

**Open Art Studio**

Santa Fe Children's Museum. See March 6 listing.

**29 FRIDAY, 7 P.M.**

**The Peter and Will Anderson Trio**

Enjoy the virtuoso on clarinet and saxophone at the museum. Tickets \$20. Harwood Museum of Art, 238 Ledoux Street, Taos, (575) 758-9826.

**30 SATURDAY, 9:30 A.M.-12:30 P.M.**

**Newborn Care Class**

The Birthing Tree. See March 22 listing.



"Peace on Fire," by Janney Martinez, age 14

**31 SUNDAY, 9:30-11 A.M.**

**Russian Language and Math Group**

Los Alamos Family Strengths Network. See March 1 listing.

**31 SUNDAY 1-4 P.M.**

**Between Two Worlds Community Showcase**

Explore and experience multi-media performances, presentations, art displays and hands-on activities by Gallery of Conscience community partners who have engaged with the museum's Between Two

Worlds exhibition in their classrooms and neighborhoods. By museum admission, New Mexico residents free on Sundays. Museum of International Folk Art, 706 Camino Lejo, Santa Fe, 476-1200.

## Ongoing Events

Museums, cultural centers and other nonprofit organizations, within an easy drive of Santa Fe, offering exhibits, programming and activities for families

**ABQ BIOPARK: ZOO, AQUARIUM, BOTANIC GARDEN**

Open daily 9 a.m. to 5 p.m.; 9 a.m. to 6 p.m. Saturdays and Sundays. Admission options: Buy a ticket to Zoo only, Aquarium/Botanic Garden, or "BioPark Combo" for all three. Call for prices. Zoo: 903 Tenth Street. Botanic Garden and Aquarium: 2601 Central Avenue, NW, Albuquerque, (505) 764-2000, [www.cabq.gov/biopark](http://www.cabq.gov/biopark).

**ABQ BIOPARK: TINGLEY BEACH**

Fish, hike, relax or sail a model boat. Year-round, sunrise to sunset. Free; no tickets needed. 1800 Tingley Drive, SW, Albuquerque. (505) 764-6200, [www.cabq.gov/biopark](http://www.cabq.gov/biopark).

**BATAAN MEMORIAL MUSEUM**

Artifacts from the Bataan Death March, Medal of Honor ribbons and biographies. Private tours available; call to arrange. Tuesday through Friday, 10 a.m. to 4 p.m. 1050 Old Pecos Trail, Santa Fe, 474-1670, [www.bataanmuseum.com](http://www.bataanmuseum.com).

**BRADBURY SCIENCE MUSEUM**

Displays, videos and interactive exhibits on the history of the atomic bomb and contemporary research conducted at Los Alamos National Laboratory. Tuesday through Saturday 10 a.m. to 4 p.m.; Sunday and Monday 1 to 5 p.m. Admission free. 15th and Central Avenue, Los Alamos, (505) 667-4444, [www.lanl.gov/museum](http://www.lanl.gov/museum).

**CHALLENGER LEARNING CENTER NEW MEXICO**

Nonprofit educational organization engages young people in science, technology, engineering and math education. Interactive educational Space simulations for students in grades 5 to 12. Special programs for grades K through 4. Activities for all ages. Open Monday through Friday, 8 a.m. to 4 p.m. with some evening activities. Call for prices and schedule; most activities require reservations. Located at the Unser Discovery Campus, 1776 Montañito Road, NW, Los Ranchos de Albuquerque, (505) 248-1776, [www.challengernm.org](http://www.challengernm.org).

**EL MUSEO CULTURAL**

Popular venue in the Railyard for classes and community events. Call or visit website to view calendar for upcoming events. 1615 Paseo de Peralta, Santa Fe, 992-0591, [www.elmuseocultural.org](http://www.elmuseocultural.org).

# Spring 2015 Calendar – Ongoing Events

## EXPLORA

Family-oriented science center creating opportunities for discovery through interactive experiences in science, technology and art. Programs for toddlers to adults. Open Monday through Saturday 10 a.m. to 6 p.m.; Sunday noon to 6 p.m. Ages 12 and up \$8; seniors \$5; children \$4; under 1 free. Children and toddlers must be accompanied by a paying adult. 1701 Mountain Road NW, Albuquerque, (505) 224-8300, [www.explora.us](http://www.explora.us).

## GEORGIA O'KEEFE MUSEUM

The largest single repository of O'Keeffe's work in the world. Exhibitions, education programs, family and youth programs. Open daily 10 a.m. to 5 p.m., and Friday until 7 p.m. Adults \$12, New Mexico residents \$6; seniors and students over 18 with ID \$10; ages 18 and under free. Free admission to New Mexico residents with ID, and their guests, on the first Friday of each month. 217 Johnson Street, Santa Fe, 946-1000, [www.okeeffemuseum.org](http://www.okeeffemuseum.org).

## HARWOOD MUSEUM OF ART

Historic and contemporary art and culture of the Taos region. Open Tuesday through Saturday 10 a.m. to 5 p.m.; Sunday noon to 5 p.m. Monthly Homeschoolers activities, weekly Teen Art activities, and many family programs. Adults \$10; seniors, students and AAA members \$8; ages 12 and under free. New Mexico residents admitted free on Sundays with proof of residence. 238 Ledoux Street, Taos, (575) 758-9826, [www.harwoodmuseum.org](http://www.harwoodmuseum.org).

## INSTITUTE OF AMERICAN INDIAN ARTS MUSEUM

The National Collection of Contemporary Indian Art. Monday and Wednesday through Saturday 10 a.m. to 5 p.m.; Sunday noon to 5 p.m. Adults \$10; seniors, students with valid ID and New Mexico residents \$5; Native people, members and veterans free. New Mexico residents free on Sunday. Children 16 and under always free. 108 Cathedral Place, Santa Fe, 983-8900, [www.iaia.edu](http://www.iaia.edu).

## LOS ALAMOS FAMILY STRENGTHS NETWORK

Education, support groups and activities for all families, parents, teens and children. Open Tuesday through Friday 9 a.m. to 1 p.m. and for scheduled evening classes. School holidays, delays and closures observed. 1990 Diamond Drive, Los Alamos, (505) 662-4515, [www.lafsn.org](http://www.lafsn.org).



"Dove of Peace and the World," by Katelyn Giles, age 14

## MUSEUM OF INDIAN ARTS AND CULTURE

Including The Roland Discovery Center: interactive exhibits, puzzles and games for the young and young at heart. Open Tuesday through Sunday, 10 a.m. to 5 p.m. General admission \$9; New Mexico residents \$6 daily and free on Sundays; New Mexico seniors with ID free on Wednesdays. Children 16 and under always free. 710 Camino Lejo, Santa Fe, 476-1250, [www.indianartsandculture.org](http://www.indianartsandculture.org).

## MUSEUM OF INTERNATIONAL FOLK ART

Wide range of folk art displays from around

the world. Museum open Tuesday through Sunday, 10 a.m. to 5 p.m. General admission \$9; New Mexico residents \$6 daily and free on Sundays; New Mexico seniors with ID free on Wednesdays. Children 16 and under always free. 706 Camino Lejo, Santa Fe, 476-1200, [www.internationalfolkart.org](http://www.internationalfolkart.org).

## MUSEUM OF SPANISH COLONIAL ART

Special activities for families and children include "Possible Bags," an art activity bag; the MoSCA Treasure Hunt; puzzles, books, historical costumes and hands-on activities in the Youth Art and Activity Center. Docent

tours at 10:30 a.m. and 1:30 p.m. Special tours for children and adults may be arranged by calling the education department at 982-2226, ext.122. Open Tuesday through Sunday, 10 a.m. to 5 p.m. General admission \$5; free to New Mexico residents on Sundays. Children 16 and under always free. 750 Camino Lejo on Museum Hill, 982-2226, [www.spanishcolonialblog.org](http://www.spanishcolonialblog.org).

## NEW MEXICO HISTORY MUSEUM

Explore history from the pre-Colombian era through the Atomic Age, including the clash and melding of cultures. In addition to galleries, the museum features the Discovery Center, a gathering space for families to engage in hands-on, self-paced activities. Toys and Games: A New Mexico Childhood exhibit continues through May 1. Open Tuesday through Sunday, 10 a.m. to 5 p.m. General admission \$9; New Mexico residents \$6 daily and free on Sundays; New Mexico seniors with ID free on Wednesdays. Children 16 and under always free. Free Friday Evenings: Free admission 5 to 8 p.m. on the first Friday of every month. Historical downtown tours Monday through Saturday 10:15 a.m. to 12:15 p.m. 113 Lincoln Avenue, Santa Fe, 476-5200, [www.nmhistory.org](http://www.nmhistory.org).

## NEW MEXICO MUSEUM OF ART

Guided tours free with museum admission. Drop In and Draw: Borrow a sketchbook and drawing materials to sketch the museum's exhibits, architecture and gardens, every day during museum hours. Open Tuesday through Sunday, 10 a.m. to 5 p.m. General admission \$9; New Mexico residents \$6 daily and free on Sundays; New Mexico seniors with ID free on Wednesdays. Children 16 and under always free. Free Friday Evenings: Free admission 5 to 8 p.m. on the first Friday of every month. 107 W. Palace Avenue, Santa Fe, 476-5072, [www.nmartmuseum.org](http://www.nmartmuseum.org).

## NEW MEXICO MUSEUM OF NATURAL HISTORY AND SCIENCE

Various exhibits, Planetarium and movies at the giant-screen Lockheed-Martin DynaTheater. Open daily 9 a.m. to 5 p.m. DynaTheater movies are shown hourly from 10 a.m. to 4 p.m. Museum admission: \$7 adults; \$6 seniors; \$4 ages 3 to 12; separate admission for DynaTheater and Planetarium. Museum admission free to New Mexico residents with ID on the first Sunday of every month. 1801 Mountain Road, NW, Albuquerque, (505) 841-2800, [www.naturalhistory.org](http://www.naturalhistory.org).



Our developmentally-based, hands-on curriculum cultivates confident, independent life-long learners with strong academic and social skills, passionate personal interests and a keen social consciousness.

**SUMMER CAMP** (SEE CAMP DIRECTORY)

**OPEN HOUSE**  
FEBRUARY 21, 10:00 AM – 12:00 PM

**GUIDED TOUR**  
FEBRUARY 25, 9:00 – 10:00 AM

\* Preschool – 6th grade \*

321 West Zia Road \* 988-1968 \* [LittleEarthSchool.org](http://LittleEarthSchool.org)

**Do you want your girl to have a memorable camp experience?**

**A place for her to be her TRUE SELF, have FUN, and create MEMORIES!**

**girls inc.**

**SPRING BREAK CAMP** March 30th - April 3rd  
(Sign up for all five days or just one)

**SUMMER CAMP** June 1st - July 31st  
(Sign up for all nine weeks or just one)

Registration Starts February 23rd @ 10:00a.m.  
**Spaces Fill Quickly!**

For more information, call 505-982-2042 or visit [www.girlsincofsantafe.org](http://www.girlsincofsantafe.org)

# Spring 2015 Calendar – Ongoing Events

## ORTIZ MOUNTAINS EDUCATIONAL PRESERVE

The Ortiz Mountains Educational Preserve of the Santa Fe Botanical Garden is open in winter months for docent-led hikes only. Located 30 miles southwest of Santa Fe, off Highway 14. Reservations required. (505) 471-9103. [www.santafebotanicalgarden.org/visit-us/ortiz-mountains-educational-preserve/](http://www.santafebotanicalgarden.org/visit-us/ortiz-mountains-educational-preserve/).

## PAJARITO ENVIRONMENTAL EDUCATION CENTER

Nature center and outdoor education programs provide opportunities for people of all ages to explore the rich natural and cultural heritage of the Pajarito Plateau. Open Tuesday through Friday, noon to 4 p.m.; Saturday, 10 a.m. to 1 p.m. Nature playtimes for toddlers and preschoolers every Monday (except holidays) from 10 to 11 a.m. Preschool and homeschool discovery programs, nature clubs, middle school and high school environmental clubs and many other activities. Registration required for most activities. 3540 Orange Street, Los Alamos. (505) 662-0460. [www.pajaritoeec.org](http://www.pajaritoeec.org).

## PALACE OF THE GOVERNORS

Various exhibits from colonial New Mexico. Open Tuesday through Sunday, 10 a.m. to 5 p.m. General admission \$9; New Mexico residents \$6 daily and free on Sundays; New Mexico seniors with ID free on Wednesdays. Children 16 and under always free. Free Friday Evenings: Free admission from 5 to 8 p.m. on the first Friday of every month. 105 W. Palace Avenue, 476-5100. [www.palaceofthegovernors.org](http://www.palaceofthegovernors.org).

## RAILYARD ARTISAN MARKET

Local artists and craftspeople, farmers, ranchers and food artisans, musicians, refreshments and entertainment, in the heart of the Santa Fe Railyard. Free every Sunday 10 a.m. to 4 p.m. Santa Fe Farmers Market, 1607 Paseo de Peralta, Santa Fe, 983-4098. [www.artmarketsantafe.com](http://www.artmarketsantafe.com).

## RANDALL DAVEY AUDUBON CENTER & SANCTUARY

Over 135 acres of striking landscapes and wildlife, bounded by the Santa Fe National Forest and Santa Fe River Watershed land. Trails and grounds are open Monday through Saturday from 8 a.m. to 5 p.m. Nature Store open Monday through Saturday from 10 a.m. to 4 p.m. Activities include guided bird walks and hikes, and tours of the Randall Davey



"Doves and Roses," by Kaela Childs, age 14

home. 1800 Upper Canyon Road, Santa Fe, 983-4609. [nmaudubon.org/randall-davey](http://nmaudubon.org/randall-davey).

## RIO GRANDE NATURE CENTER STATE PARK

270 acres of woods, meadows and farmland flourishing with native grasses, wildflowers, willows and cottonwoods, just outside of Albuquerque. Gates open 8 a.m. to 5 p.m. every day; visitor center open 10 a.m. to 5 p.m. Admission \$3 per vehicle. 2901 Candelaria, NW, Albuquerque, 505-344-7240. [www.rgnc.org](http://www.rgnc.org).

## SANTA FE BOTANICAL GARDEN

Winter hours: Thursday through Sunday 11 a.m. to 3 p.m. General admission \$7.50; seniors and military \$6; students \$5; ages 12 and under free. Members free. 715 Camino Lejo, Santa Fe, [www.santafebotanicalgarden.org](http://www.santafebotanicalgarden.org).

## SANTA FE CHILDREN'S MUSEUM

Open Wednesday, Friday and Saturday 10 a.m. to 5 p.m.; Thursday 10 a.m. to 7 p.m. and Sunday noon to 5 p.m. Climbing Wall: Saturday and Sunday 2:30 to 4:30 p.m. General admission \$7.50. Children under 16 free after 4 p.m. Family memberships available. 1050 Old Pecos Trail, Santa Fe, 989-8359. [www.santafechildrensmuseum.org](http://www.santafechildrensmuseum.org).

## SANTA FE FARMERS' MARKET

Open every Saturday 8 a.m. to 1 p.m., and Tuesdays in summer. The Railyard Artisans market open every Sunday 10 a.m. to 4 p.m. Santa Fe Farmers Market, 1607 Paseo de Peralta. 983-4098. [www.santafefarmersmarket.com](http://www.santafefarmersmarket.com).

## SANTA FE PUBLIC LIBRARY

Main Library, 145 Washington Avenue, Monday through Thursday, 10 a.m. to 8 p.m.; Friday

and Saturday, 10 a.m. to 6 p.m.; Sunday 1 to 5 p.m., 955-6780. Oliver La Farge Branch, 1730 Llano Street, Monday through Wednesday, 10 a.m. to 8 p.m.; Thursday to Saturday, 10 a.m. to 6 p.m.; closed Sundays, 955-4860. Southside Branch, 6599 Jaguar Drive, Monday through Thursday, 10 a.m. to 8 p.m.; Friday and Saturday, 10 a.m. to 6 p.m.; closed Sunday, 955-2810. [www.santafelibrary.org](http://www.santafelibrary.org).

## VISTA GRANDE PUBLIC LIBRARY

Open Tuesday through Friday, noon to 6 p.m. Saturday, 10 a.m. to 4 p.m. Closed Sunday and Monday. Story times, family movie nights, summer reading programs and special events. 14 Avenida Torreon, Eldorado, 466-7323. [www.vglibrary.org](http://www.vglibrary.org).

## WAREHOUSE 21

Dance concerts, theater productions and other events and classes for youth under 21. 1614 Paseo de Peralta, 989-4423. [www.warehouse21.org](http://www.warehouse21.org).

## WHEELWRIGHT MUSEUM OF THE AMERICAN INDIAN

Contemporary and historic Native American art with an emphasis on the Southwest. Private, not-for-profit; no admission fee but donations welcome. Open Monday through Saturday 10 a.m. to 5 p.m.; Sunday 1 to 5 p.m. 704 Camino Lejo, Santa Fe, 982-4636. [www.wheelwright.org](http://www.wheelwright.org).

## WILDLIFE WEST

Park and attraction dedicated to native wildlife and ecology. 122 acres, including a 1/3-acre pond. All animals are non-releasable, due to injury or other factor that makes life in the wild impossible for them. Park includes an educational program and hosts concerts, festivals and other events. Open 10 a.m. to 6 p.m. or by appointment. Camping available. Adults \$7; seniors \$6; students \$4; children under 5 free. 87 North Frontage Road, Edgewood (just east of Albuquerque), (505) 281-7655 or (877) 981-9453. [www.wildlifewest.org](http://www.wildlifewest.org).

*Please send us information about family events happening in June, July and August for our Summer 2015 Calendar. Send by email (preferred): [calendar@sftumbleweeds.com](mailto:calendar@sftumbleweeds.com); or mail: Tumbleweeds, 369 Montezuma #191, Santa Fe, NM 87501. Deadline: May 1.*

MERCI  
BEAUCOUP

thanks

Tumbleweeds is 100-percent supported by our advertisers. Your ad in Tumbleweeds does more than strengthen your business. It also strengthens the community of parents, educators, policy makers, business owners and others who care about children and families in Santa Fe.

Thank you for advertising!

And thank you for telling advertisers, "Hey! We saw you in Tumbleweeds!"

GRACIAS

THANK YOU!

# Adopt-a-Pet Fridays

with the Santa Fe Animal Shelter and Humane Society

The **BIG** Show  
with Honey Harris



Photo By: Ben Swan



Tune in every other Friday to learn about the Santa Fe Humane Society's upcoming events & meet some adoptable furry friends!

Streaming Live



Hutton Broadcasting, LLC is an equal opportunity employer. For a list of our current job opportunities please log onto [SantaFe.com/careers](http://SantaFe.com/careers) or please send your resume to [lisa@santafe.com](mailto:lisa@santafe.com). Hutton Broadcasting, LLC does not discriminate on the basis of race, color, national origin, gender or sexual orientation.

Hutton Broadcasting, LLC • 2502 Camino Entrada Suite C Santa Fe, NM 87507

**Treating your kids has never been easier!**



**Pediatric Walk-In Clinic  
at Arroyo Chamiso  
Has Increased Hours!**

**9:00 am – 7:00 pm  
Monday – Friday**

**We treat patients from  
newborn to 18 years of age.**

- Serving acute care children who need to see a doctor urgently
- Sports physicals
- All insurance accepted including Salud

**Providers on Staff are Roberto Araiza, MD, MPH  
and Georgina Gomez-Lieberman, CNP**



**For more information call (505) 913-4901**

**2025 S. Galisteo • Santa Fe, NM 87505**

**The Summer Camp**  
where **ART** meets **science**



**"Big Sky has inspired my daughter to become a scientist, and has given her competence, confidence, and a deep love of learning.**

**Truly, I can't recommend Big Sky highly enough."**

**-Build It! Mom**

**Week long day camps in Santa Fe and Los Alamos  
[www.bigskylearning.com](http://www.bigskylearning.com) (505) 428-7575**

**For campers 5 to 6**

**I Scream For Pizza!  
How to Build Your Dragon  
Wizarding  
The Magic Hat**



**For campers 9 to 12**

**Saber Shop Extreme  
Wire Warriors  
Drone Craft  
Survival Archery**

**For campers 6 to 8**

**Fast Cars and Boats  
Solar Pizza Party Extreme  
Future Fire Trucks  
Treasure Seekers**

